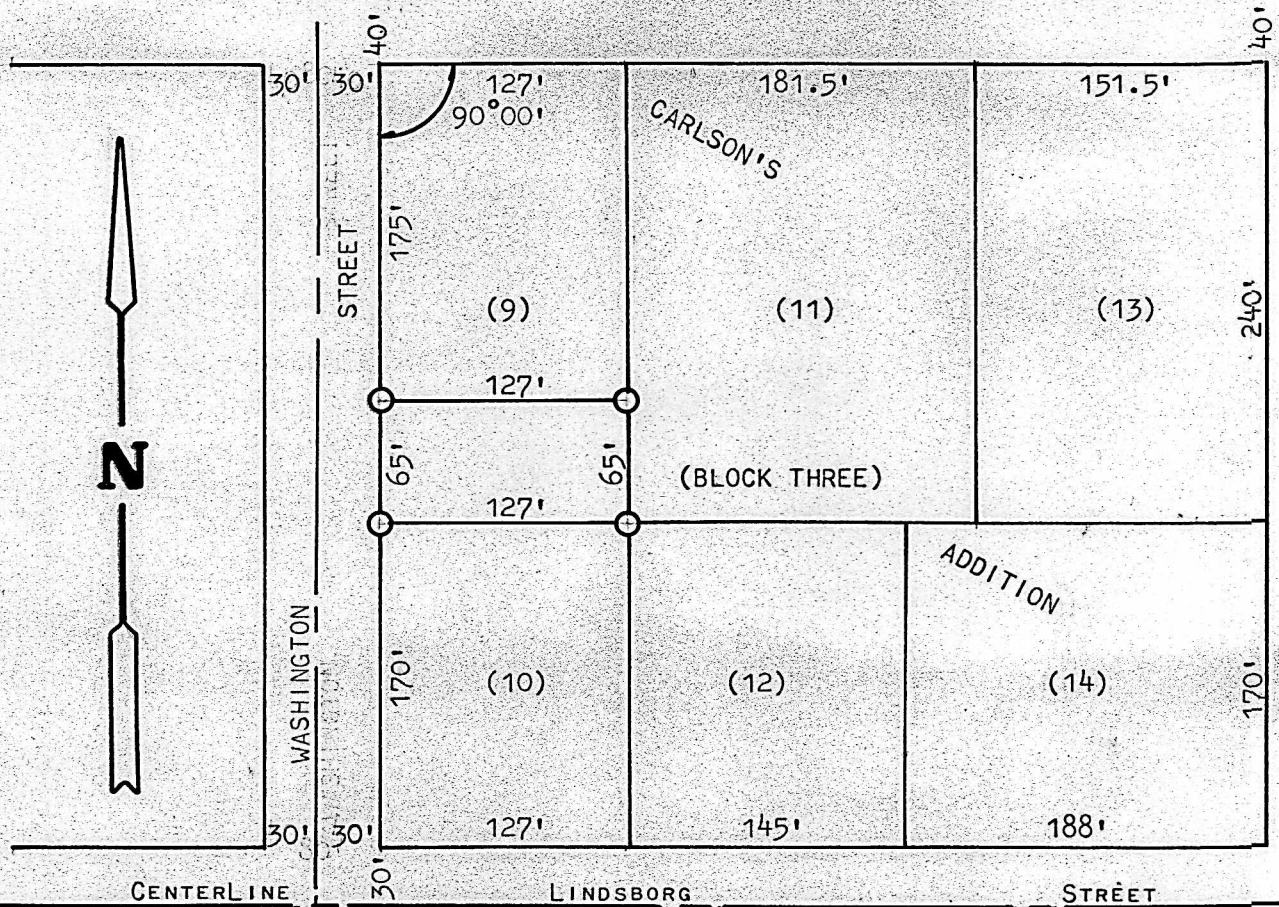


CENTERLINE

McPHERSON

STREET



STATE OF KANSAS)
COUNTY OF McPHERSON) ss

SURVEY CALLED FOR BY ROBERT FEHR

F. R. RANKIN

COUNTY ENGINEER

McPHERSON, KANSAS



SIGNED THIS 13 DAY OF FEBRUARY, 1969.