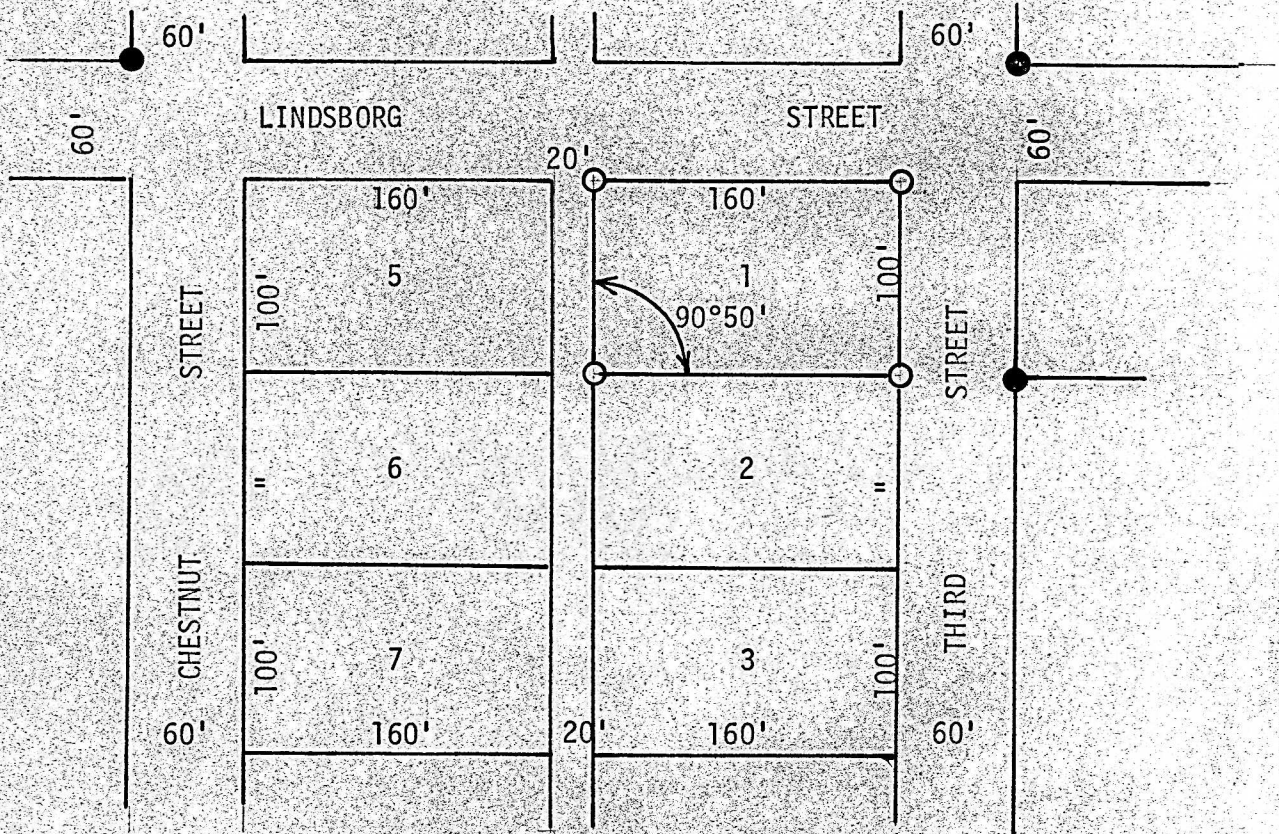


A SURVEY OF LOT 1, BLOCK 6,
CARLSON'S SECOND ADDITION
LINDSBORG, KANSAS



- Pins Set This Survey
- Pins Found This Survey

State of Kansas)
County of McPherson) SS

I, F. R. Rankin, County Engineer of McPherson County, Kansas, do hereby certify that under my supervision a survey was made of Lot 1, Block 6, Carlson's Second Addition to the City of Lindsborg, Kansas. The above plat is a true exhibit of said survey as far as it is known to me.

Survey called for by John Haline

Signed on this 15 day of May, 1972

Wm Rankin PE

F. R. Rankin, P. E.
County Engineer
McPherson County, Kansas

