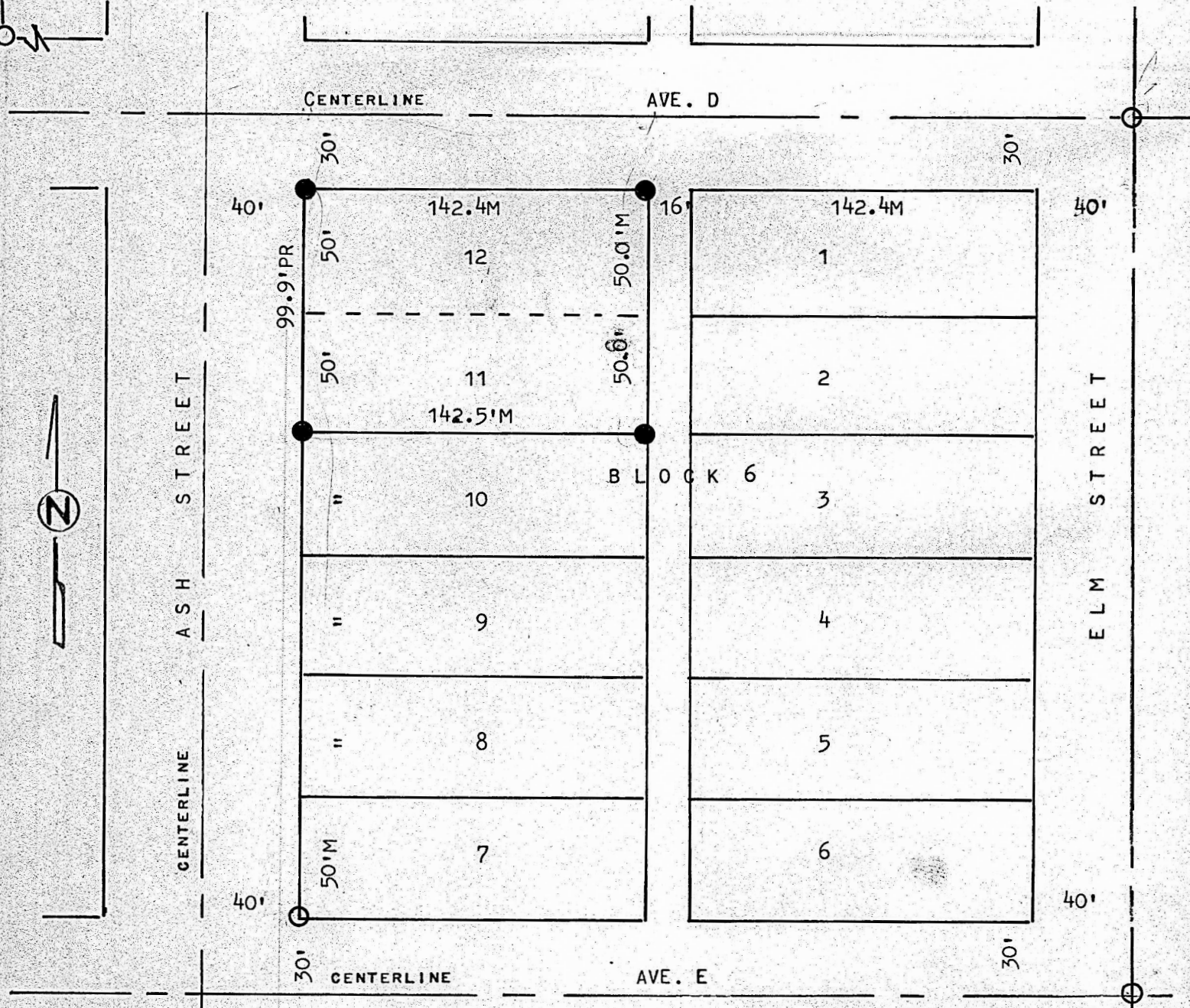


A SURVEY OF LOTS 11 & 12
BLOCK 6, C. K. & N, ADDITION
MCPHERSON, KANSAS



○ PINS FOUND THIS SURVEY
● PINS SET THIS SURVEY

STATE OF KANSAS)
COUNTY OF MCPHERSON) SS

I, MELVIN FERGUSON, PROFESSIONAL ENGINEER OF THE STATE OF KANSAS DO HEREBY CERTIFY THAT UNDER MY SUPERVISION A SURVEY WAS MADE OF LOTS 11 & 12, BLOCK 6, OF C. N. & N. ADDITION TO THE CITY OF MCPHERSON, KANSAS, AND THAT THE ABOVE PLAT IS A TRUE EXHIBIT OF SAID SURVEY AS FAR AS IT IS KNOWN TO ME

SURVEY CALLED FOR BY GREEN

SIGNED THIS DAY OF AUGUST, 1981
Melvin Ferguson
MELVIN FERGUSON
PROFESSIONAL ENGINEER
MCPHERSON, KANSAS

