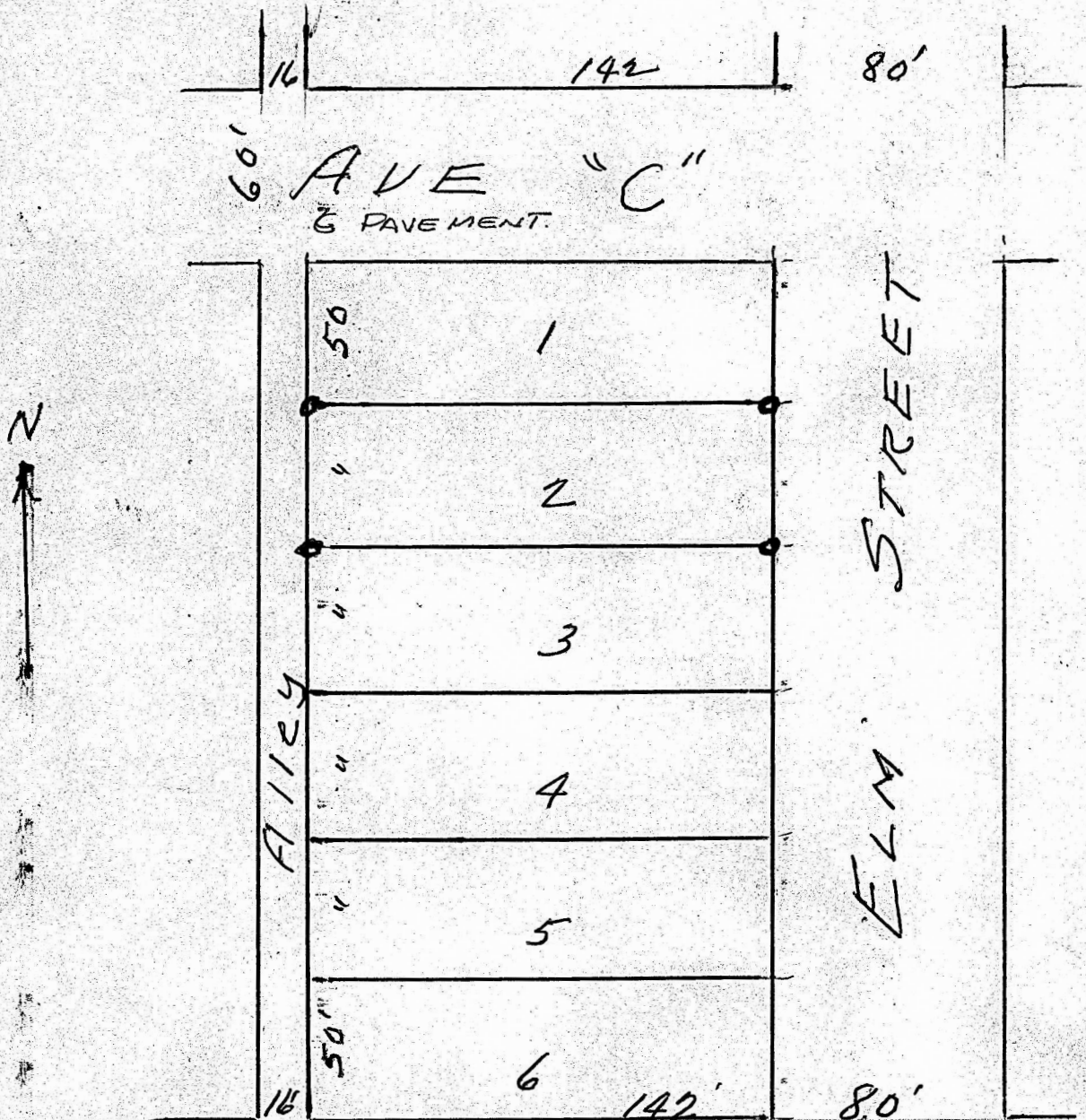


Lot 22 Block 3. C. K. & N. Addition, McPherson, Kansas.



State of Kansas, County of McPherson, ss.

I, G.D. Johnson, Licensed Civil Engineer of the State of Kansas do hereby certify that I did on the 24th. day of August, 1956 survey lot 2, Block 3, C. K. & N. Addition to the City of McPherson, Kansas and that accompanying plat is a true exhibit of said survey.

G. D. Johnson

MICROFILM

