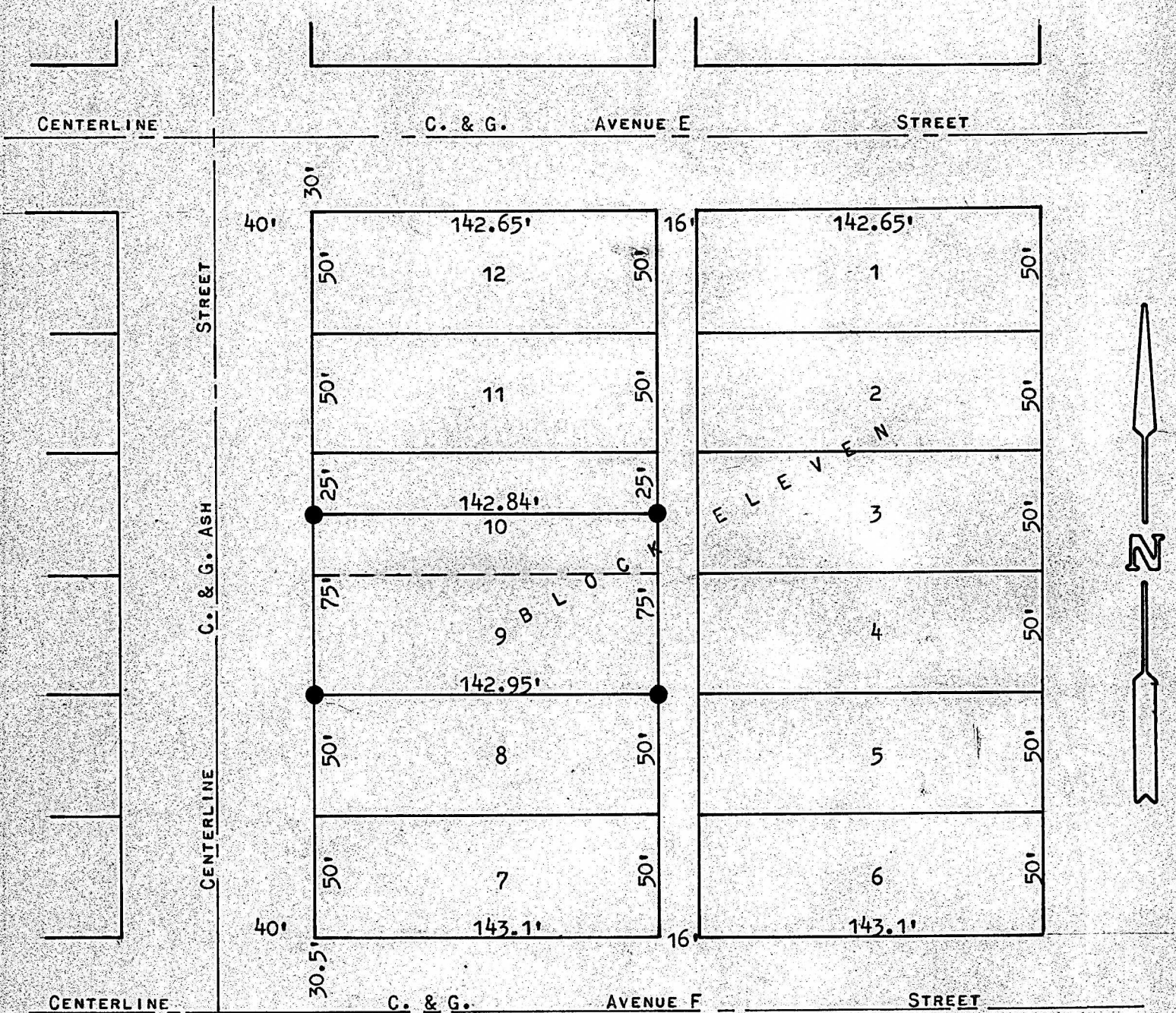


A SURVEY OF LOT 9 AND THE S1/2 OF LOT 10,
BLOCK 11, C. K. & N. ADDITION
McPHERSON, KANSAS



● PINS SET THIS SURVEY

STATE OF KANSAS)
COUNTY OF MCPHERSON) ss

I, FRANCIS RANKIN, COUNTY ENGINEER OF MCPHERSON CO., KANSAS, DO HEREBY CERTIFY THAT UNDER MY SUPERVISION A SURVEY WAS MADE OF LOT 9 AND THE SOUTH 1/2 OF LOT 10, BLOCK 11, C. K. & N. ADDITION TO THE CITY OF MCPHERSON, KANSAS, AND THE ABOVE PLAT IS A TRUE EXHIBIT OF SAID SURVEY AS FOR AS IT IS KNOWN TO ME.

SURVEY CALLED FOR BY GERTRUD HOYER.

SIGNED ON THIS 14 DAY OF JUNE, 1971.

F. R. Rankin

F. R. RANKIN

COUNTY ENGINEER

MCPHERSON CO., KANSAS



MICROFILM