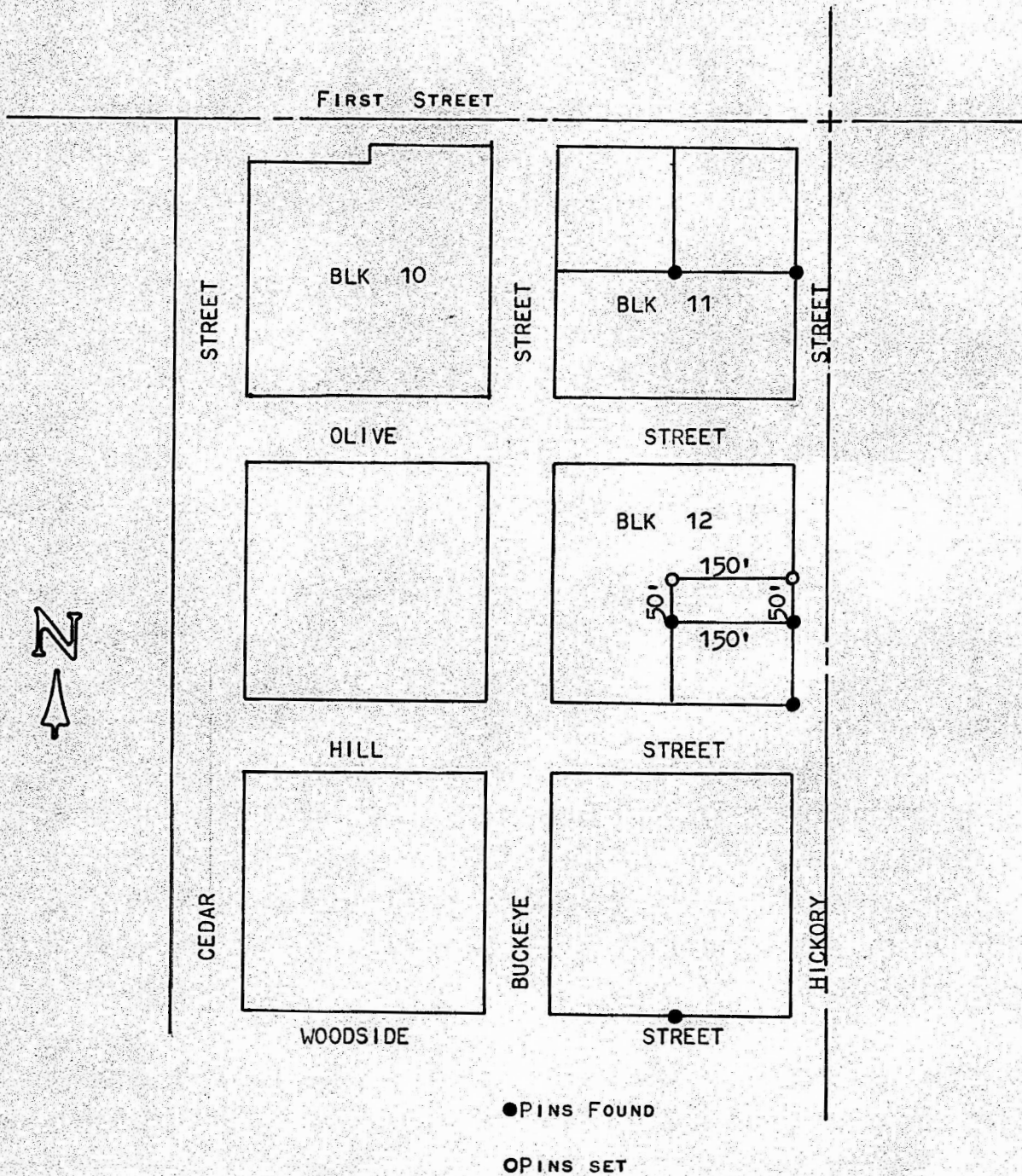


A SURVEY IN BLOCK 12
BREWER'S ADDITION
McPHERSON, KANSAS



STATE OF KANSAS)
COUNTY OF MCPHERSON)^{SS}

I, MELVIN FERGUSON, COUNTY ENGINEER OF MCPHERSON COUNTY, KANSAS, DO HEREBY CERTIFY THAT UNDER MY SUPERVISION A SURVEY WAS MADE OF THE NORTH 50 FEET OF THE E1/2 OF THE S1/2 OF BLOCK 12, BREWER'S ADDITION TO THE CITY OF MCPHERSON, KANSAS, AND THE ABOVE PLAT IS A TRUE EXHIBIT OF SAID SURVEY AS FAR AS IT IS KNOWN TO ME.

SURVEY CALLED FOR BY DEAN CHERPITEL

SIGNED ON THIS 24th DAY OF JANUARY, 1975.

Melvin Ferguson
MELVIN FERGUSON
COUNTY ENGINEER
MCPHERSON CO., KANSAS

MELVIN V. FERGUSON
LICENSED
6772
KANSAS
PROFESSIONAL ENGINEER