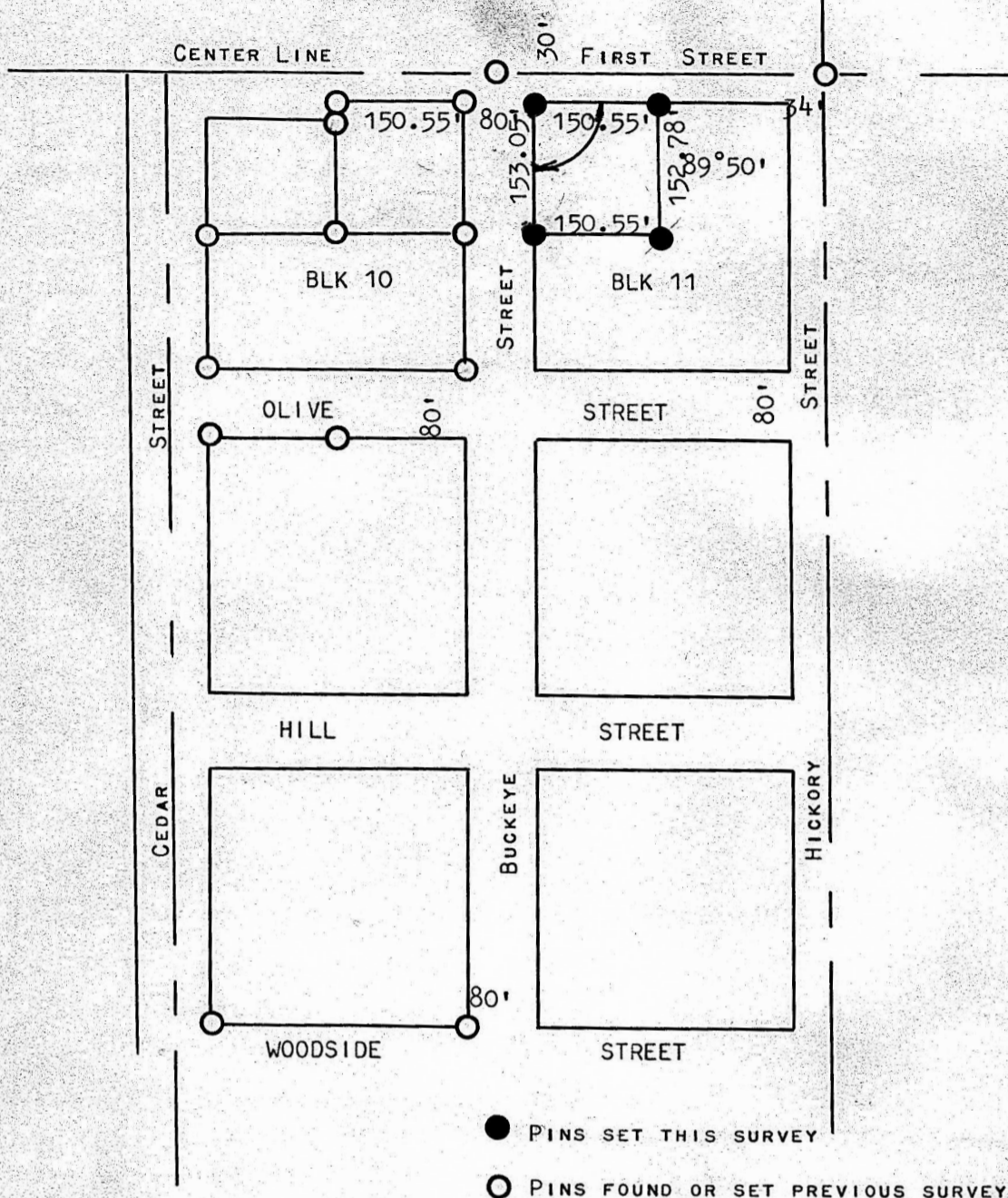


A SURVEY IN BLOCK 11
BREWER'S ADDITION
MCPHERSON, KANSAS



STATE OF KANSAS)
COUNTY OF MCPHERSON) SS

I, FRANCIS RANKIN, PROFESSIONAL ENGINEER OF THE STATE OF KANSAS
DO HEREBY CERTIFY THAT UNDER MY SUPERVISION A SURVEY WAS MADE OF
THE NW1/4 BLOCK 11, BREWER'S ADDITION TO THE CITY OF MCPHERSON,
KANSAS AND THAT THE ABOVE PLAT IS A TRUE EXHIBIT OF SAID SURVEY
AS FAR AS IT IS KNOWN TO ME.

SURVEY CALLED FOR BY ROBERT SWICK

SIGNED THIS 13 DAY OF FEBRUARY, 1968

Francis Rankin
FRANCIS RANKIN
PROFESSIONAL ENGINEER
MCPHERSON, KANSAS



MICROFILM