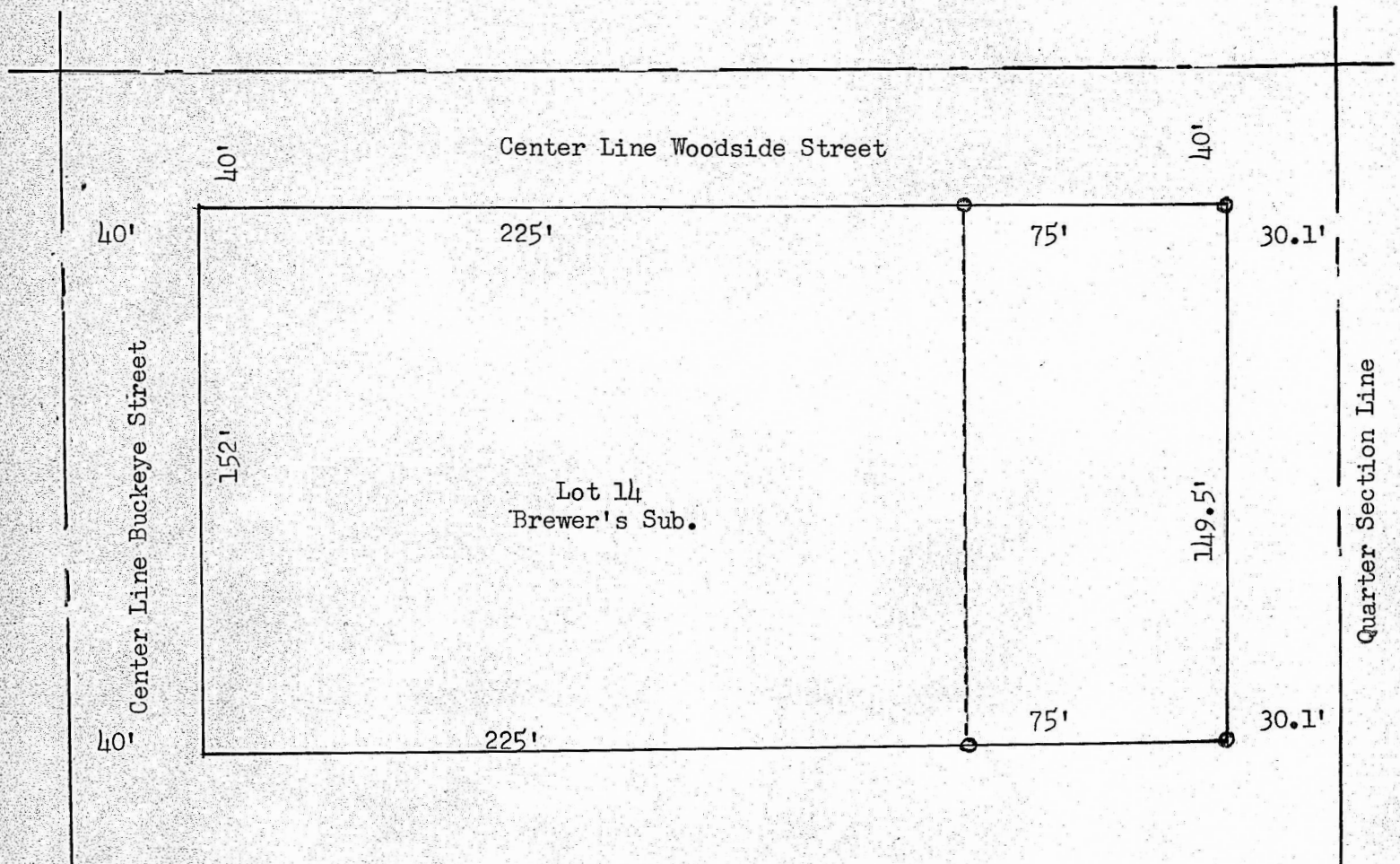


7th. August, 1950



State of Kansas, County of McPherson, ss.

I, Francis D. Wagner, County Engineer of McPherson County, Kansas do hereby certify that I did on the 4th. August, 1950, survey the East 75' of Lot 14 Brewer's Sub. to the City of McPherson, Kansas, and that the accompanying plat is a true exhibit of said survey.

Francis D. Wagner
County Engineer
McPherson, Kansas

MICROFILM