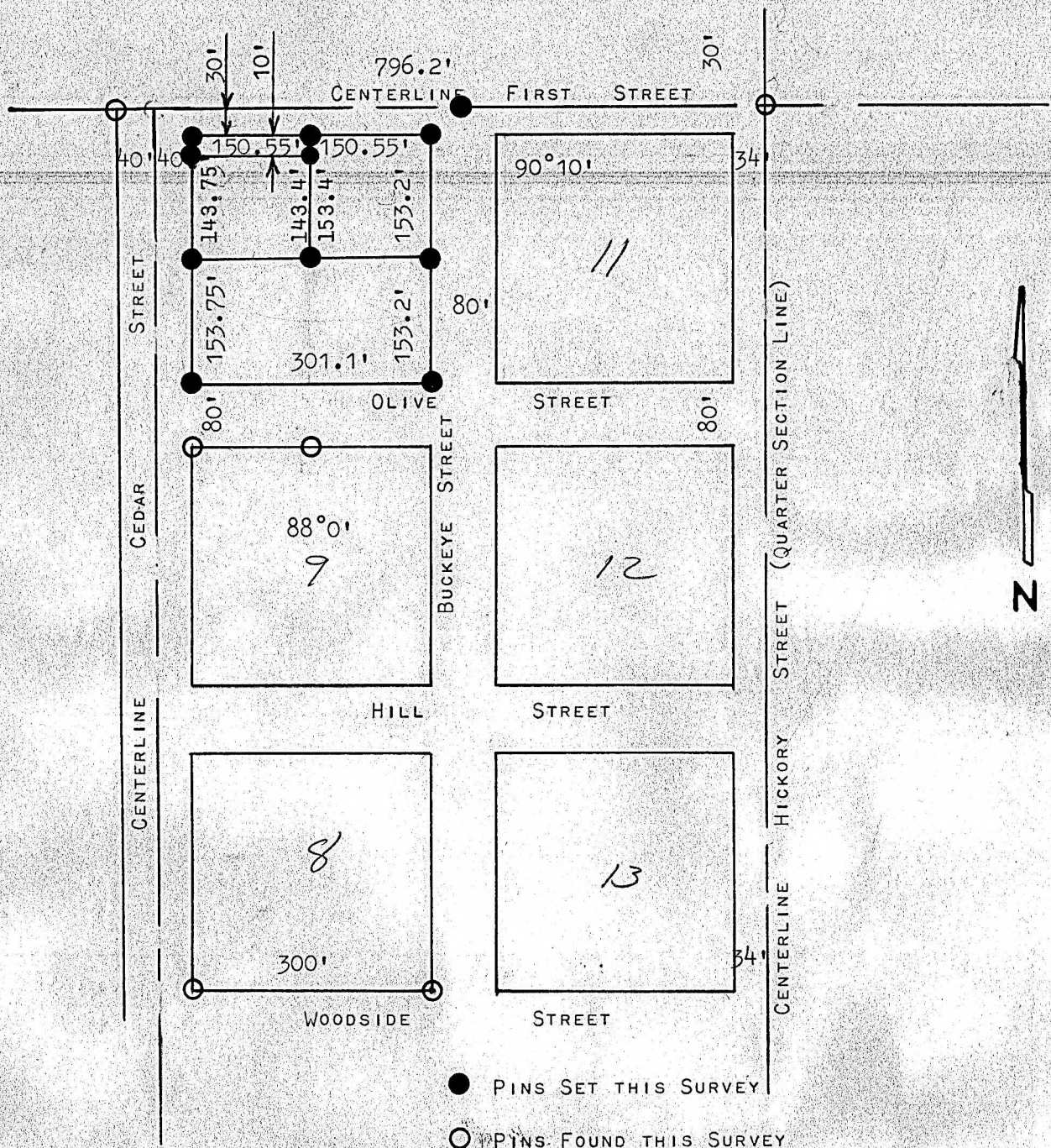


A SURVEY OF BLOCK 10
 BREWER'S ADDITION
 CITY OF McPHERSON, KANSAS



STATE OF KANSAS)
 COUNTY OF McPHERSON) ss

I, F.R. RANKIN, COUNTY ENGINEER OF McPHERSON, KANSAS, DO HEREBY CERTIFY THAT UNDER MY SUPERVISION A SURVEY WAS MADE OF BLOCK 10 OF BREWER'S ADDITION TO THE CITY OF McPHERSON, KANSAS, AND THAT THE ABOVE PLAT IS A TRUE EXHIBIT OF SAID SURVEY AS FAR AS IT IS KNOWN TO ME.

SURVEY CALLED FOR BY McPHERSON CHAMBER OF COMMERCE

SIGNED THIS 7th DAY OF SEPTEMBER 1967

F.R. Rankin
 F.R. RANKIN
 COUNTY ENGINEER
 McPHERSON, KANSAS

F.R. RANKIN
799
KANSAS
PROFESSIONAL ENGINEER

MICROFILM
 MICROFILM