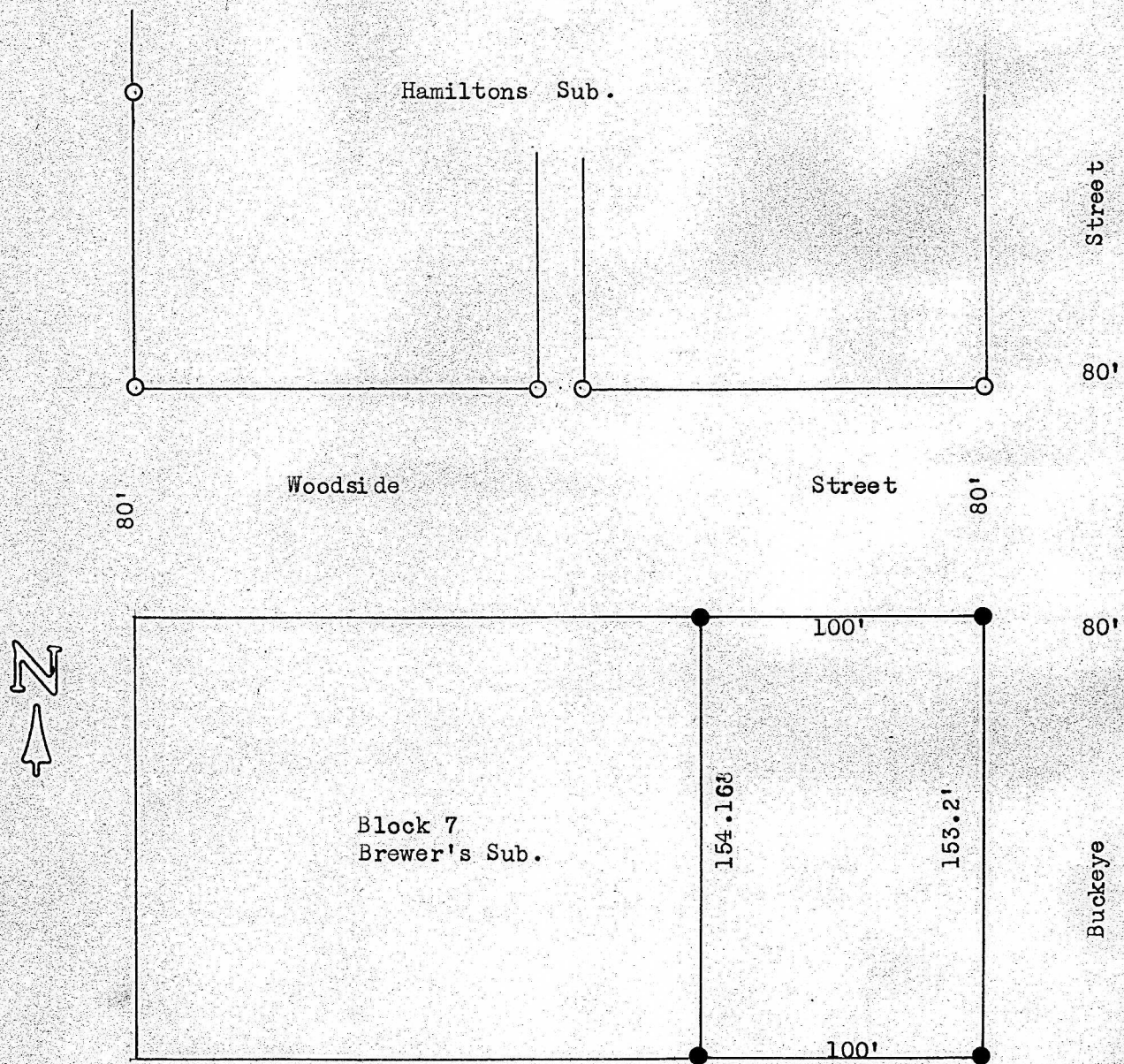


East 100' Block 7
Brewer Sub. Div.
McPherson, Kansas



- Pins found this Survey
- Pins set this Survey

State of Kansas)
County of McPherson) S.S.

I, Francis Rankin, County Engineer of McPherson, Kansas do hereby certify that under my supervision a survey was made of the East 100' feet of Block 7, Brewer's Sub., McPherson, Kansas and the above plat is a true exhibit of said survey as far as it is known to me.

Survey called for by Charles H. Crow

Signed this 6 day December 1967

Francis Rankin
Francis Rankin
County Engineer
McPherson, Kansas

