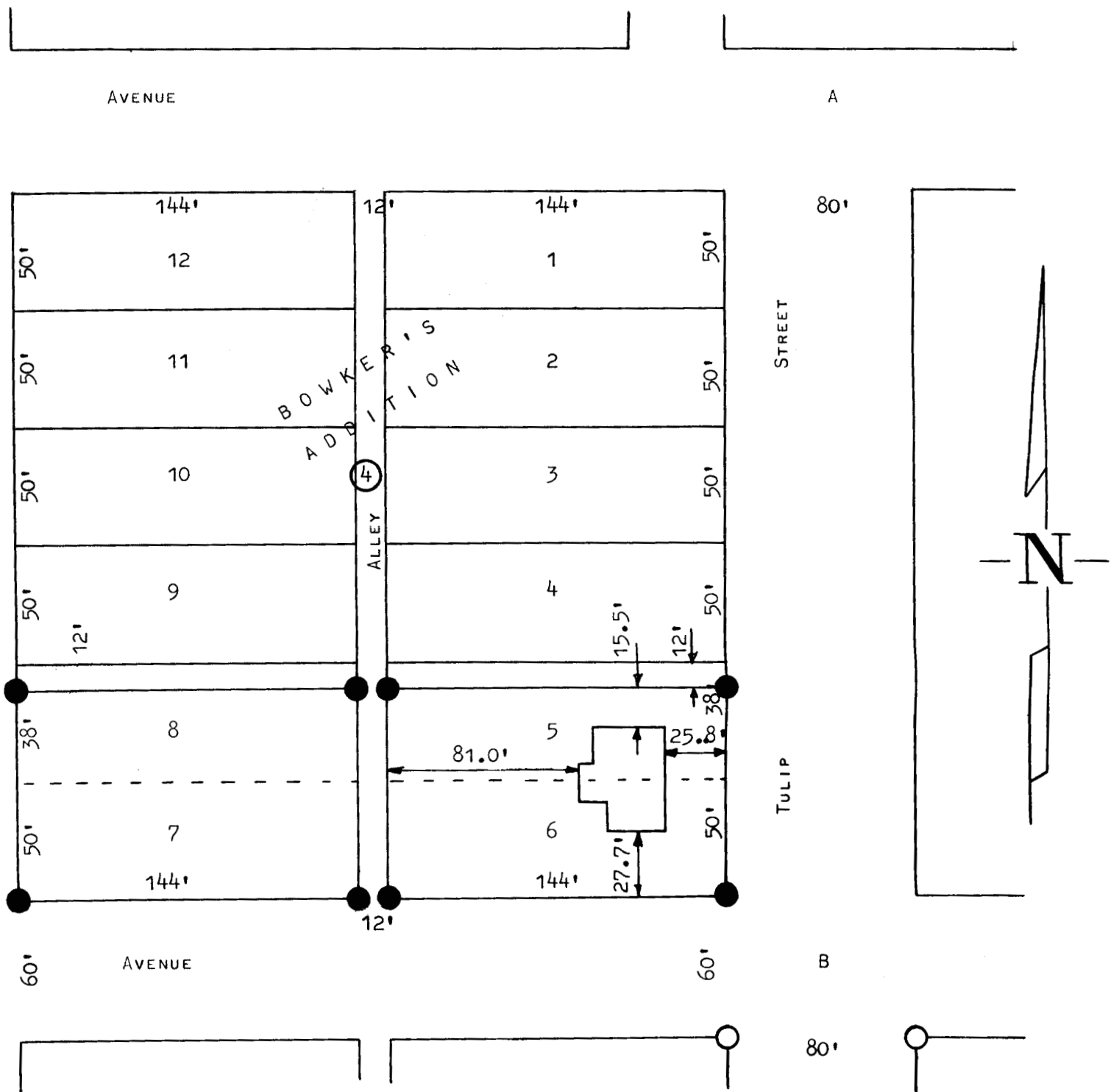


A SURVEY IN BLOCK 4
BOWKER'S ADDITION TO THE CITY OF MCPHERSON
MCPHERSON, KANSAS



- PINS SET THIS SURVEY.
- PINS FOUND THIS SURVEY.

STATE OF KANSAS) SS
COUNTY OF MCPHERSON)

I, FRANCIS D. WAGNER, COUNTY ENGINEER OF MCPHERSON COUNTY, KANSAS, DID CAUSE TO BE DONE ON THE 23RD DAY OF FEBRUARY, 1961, A SURVEY OF SOUTH 38 FEET LOT 5, LOTS 6 AND 7 AND THE SOUTH 38 FEET LOT 8, BLOCK 4, BOWKER'S ADDITION TO THE CITY OF MCPHERSON, KANSAS, AND THAT THE ACCOMPANYING PLAT IS A TRUE EXHIBIT OF SAID SURVEY.