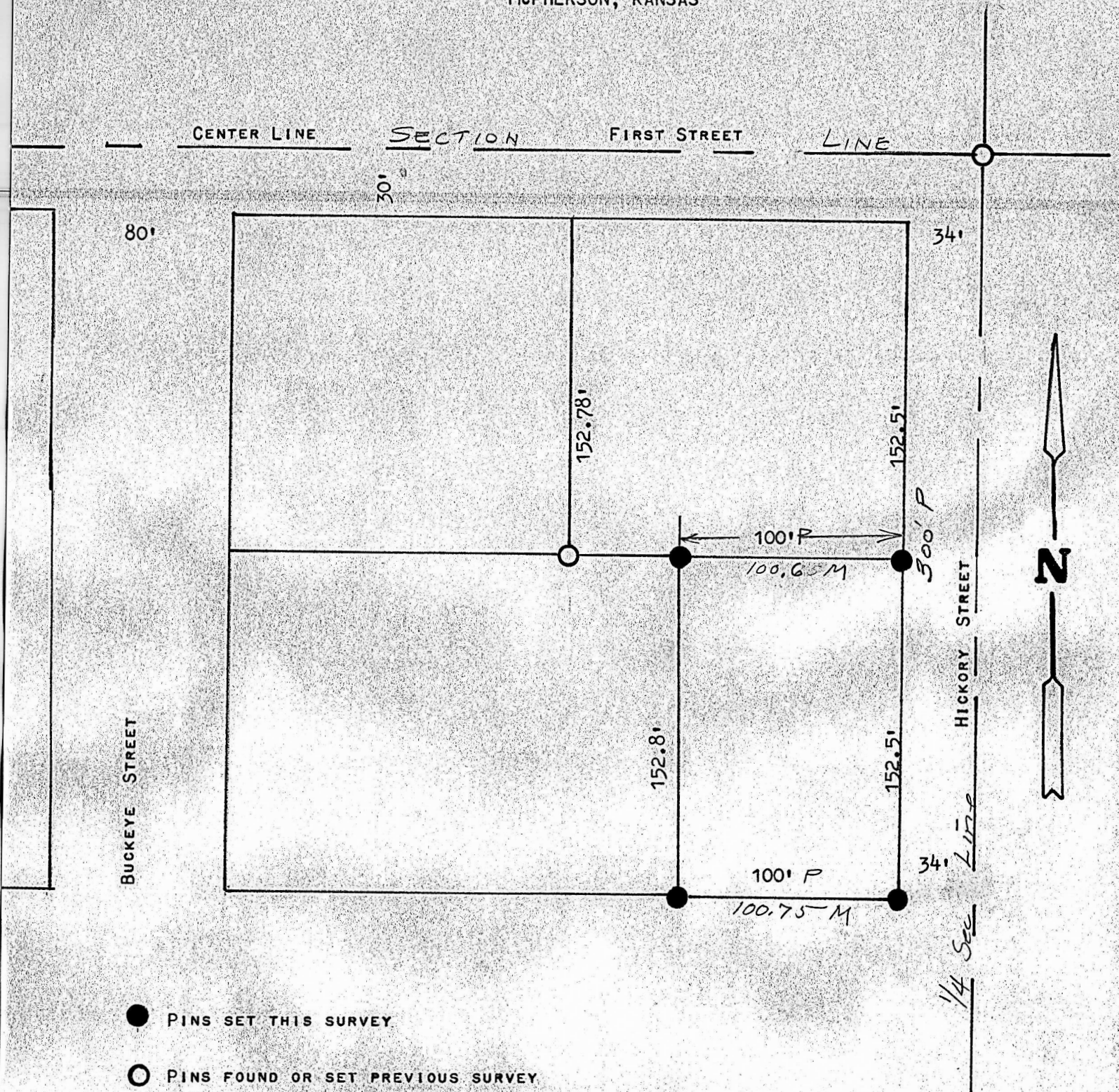


A SURVEY IN BLOCK 11  
BREWER'S ADDITION  
McPHERSON, KANSAS



STATE OF KANSAS) SS  
COUNTY OF MC PHERSON)

I, F.R. RANKIN, COUNTY ENGINEER OF THE COUNTY OF MCPHERSON, KANSAS, DO HEREBY CERTIFY THAT UNDER MY SUPERVISION A SURVEY WAS MADE OF THE EAST 100' OF THE SOUTH 1/2 OF BLOCK 11, BREWER'S ADDITION TO THE CITY OF MCPHERSON, KANSAS AND THAT THE ABOVE PLAT IS A TRUE EXHIBIT OF SAID SURVEY AS FAR AS IT IS KNOWN TO ME.

SURVEY CALLED FOR BY JACK YOST JR.

SIGNED THIS THE 25 DAY OF MAY, 1972.

*F.R. Rankin*  
F.R. RANKIN  
COUNTY ENGINEER  
MCPHERSON, KANSAS

