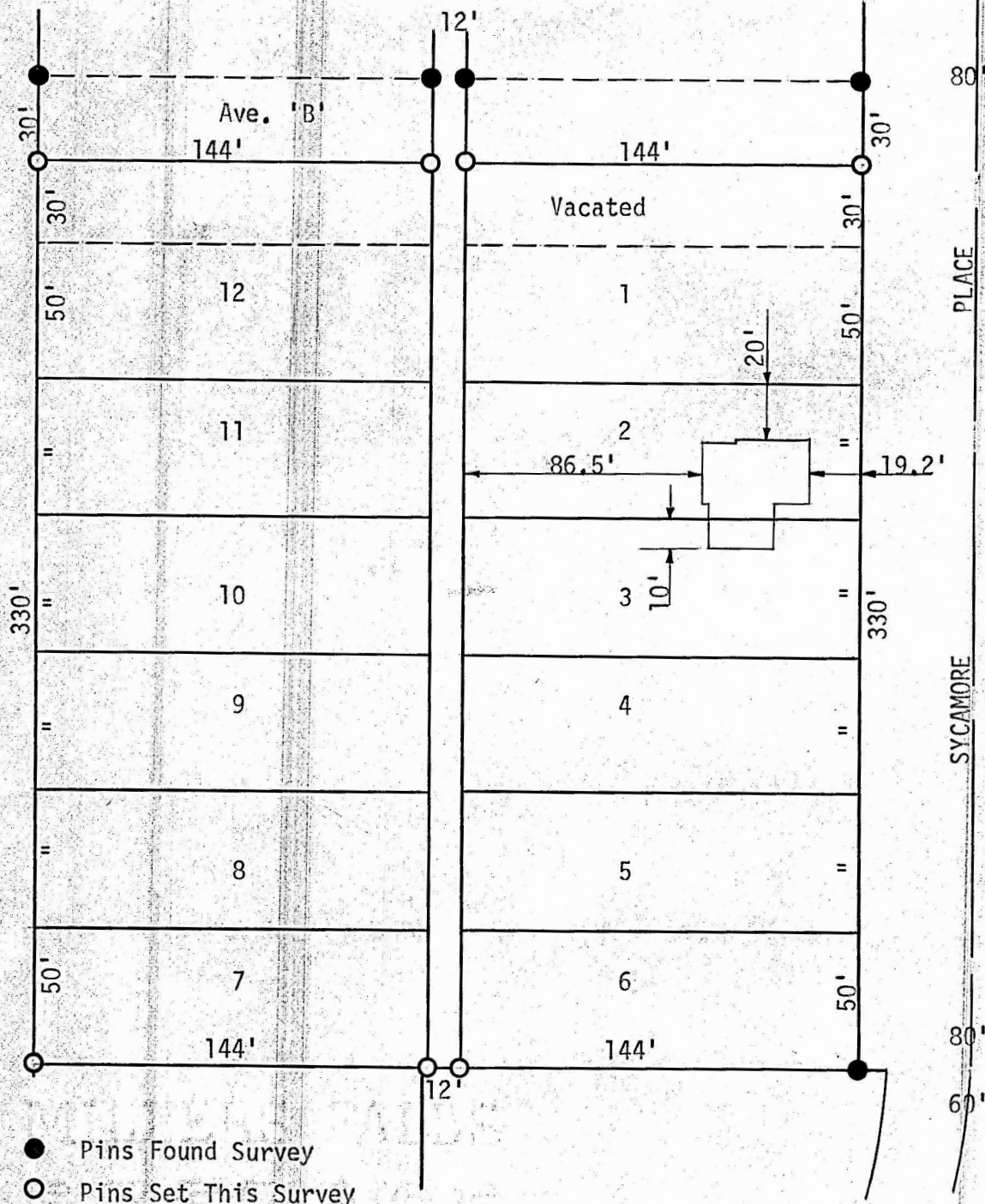
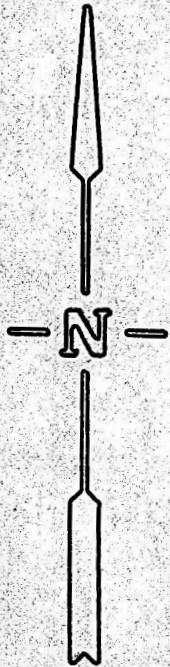


A SURVEY OF BLOCK 11, BOWKER'S
ADDITION & THE S 1/2 OF AVE. 'B'
IN THE CITY OF MCPHERSON, KANSAS



State of Kansas)
County of McPherson) SS

I, F. R. Rankin, County Engineer of McPherson County, Kansas, do hereby certify that under my supervision a survey was made of Block 11, Bowker's Addition and the S 1/2 of Ave. 'B' in the City of McPherson, Kansas. The above plat is a true exhibit of said survey as far as it is known to me.

Survey called for by John Schafer

Signed on this 13 day of April, 1973

F. R. Rankin
F. R. Rankin, P.
County Engineer
McPherson County, Kansas 799



MICROFILM