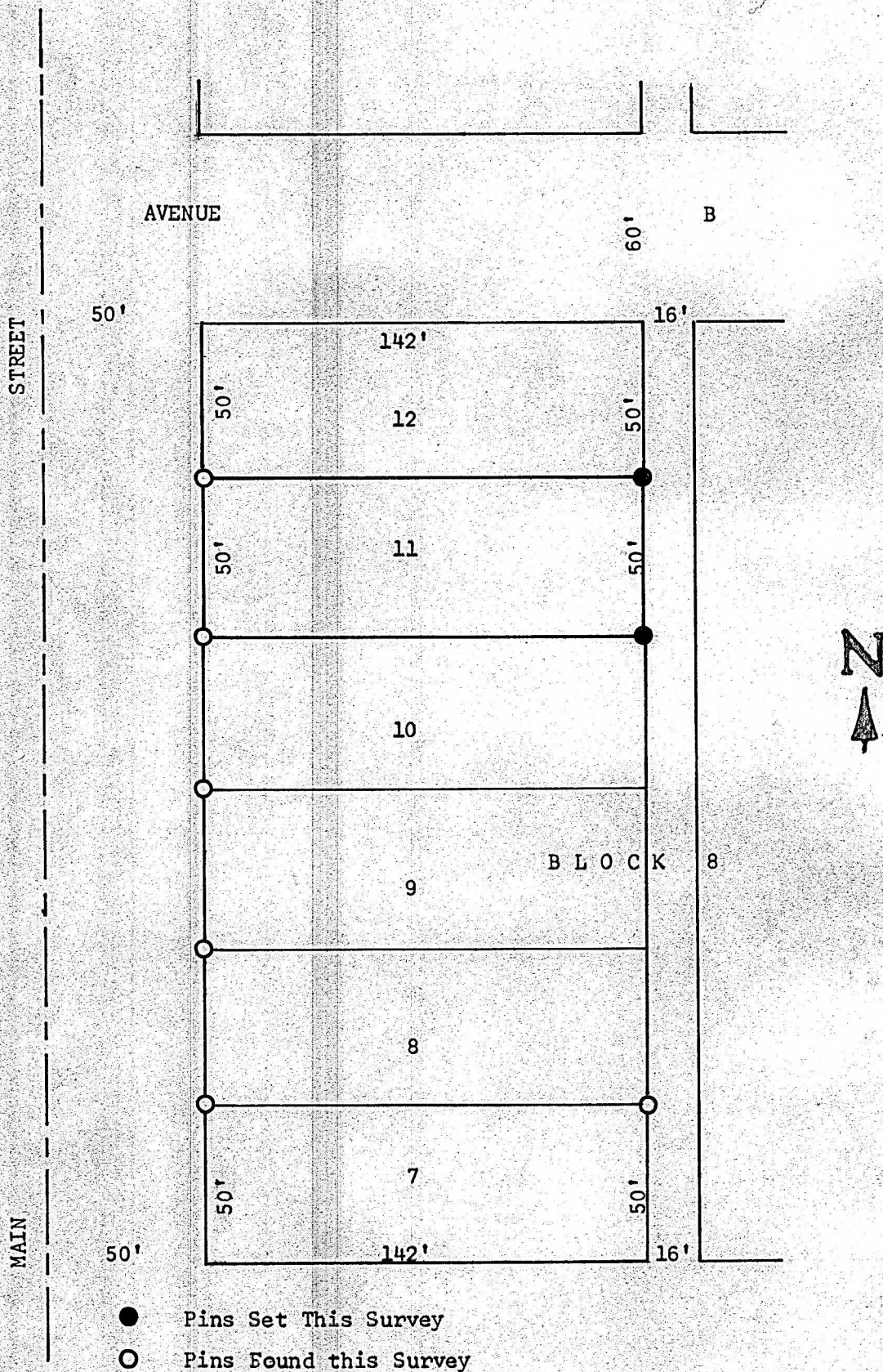


A SURVEY OF LOT 11, BLOCK 8, BOWKERS ADDITION  
MC PHERSON, KANSAS



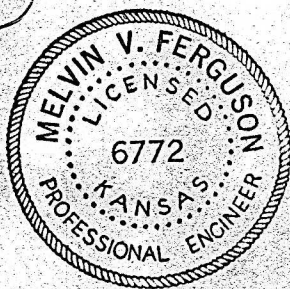
State of Kansas )  
County of McPherson) SS

I, Melvin Ferguson, County Engineer, McPherson County, Kansas, do hereby certify that under my supervision a survey was made of Lot 11, Block 8, Bowkers Addition, McPherson, Kansas, and that the above plat is a true exhibit of said survey as far as it is known to me.

Survey called for by Vernon Booth

Signed this 3<sup>rd</sup> day of May, 1974

*Melvin Ferguson*  
Melvin Ferguson, P. E.  
County Engineer  
McPherson, Kansas



MICROFILM