

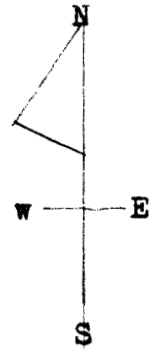
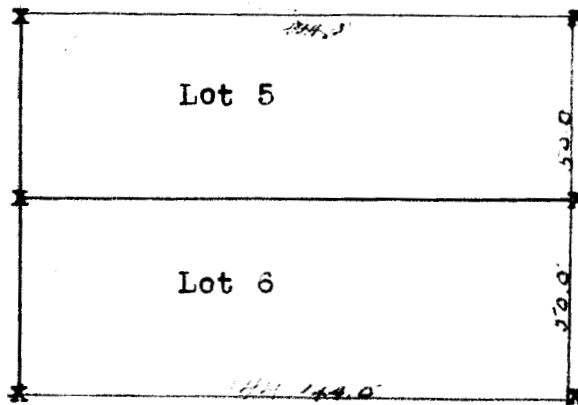
H. A. ROWLAND • Kansas Licensed Civil Engineer

Member

National Society Professional Engineers
Kansas Society Professional Engineers
Kansas Engineering Society

PHONE 796 X

McPHERSON, KANSAS



Scale 1 in to 50f

State of Kansas, McPherson County, ss.,
THIS IS TO CERTIFY, THAT, I, have made a survey of a tract of land
known as Lots 5 and 6 in Bowker's Addition and in Block 9 of t
and that the above plat is in accordance with said survey. The
corners marked by an x on the above plat on the grounds have in
pins to mark the same.

Dated at McPherson, Kansas, Sep. 25th 1950.

Signed:- H. A. Rowland

