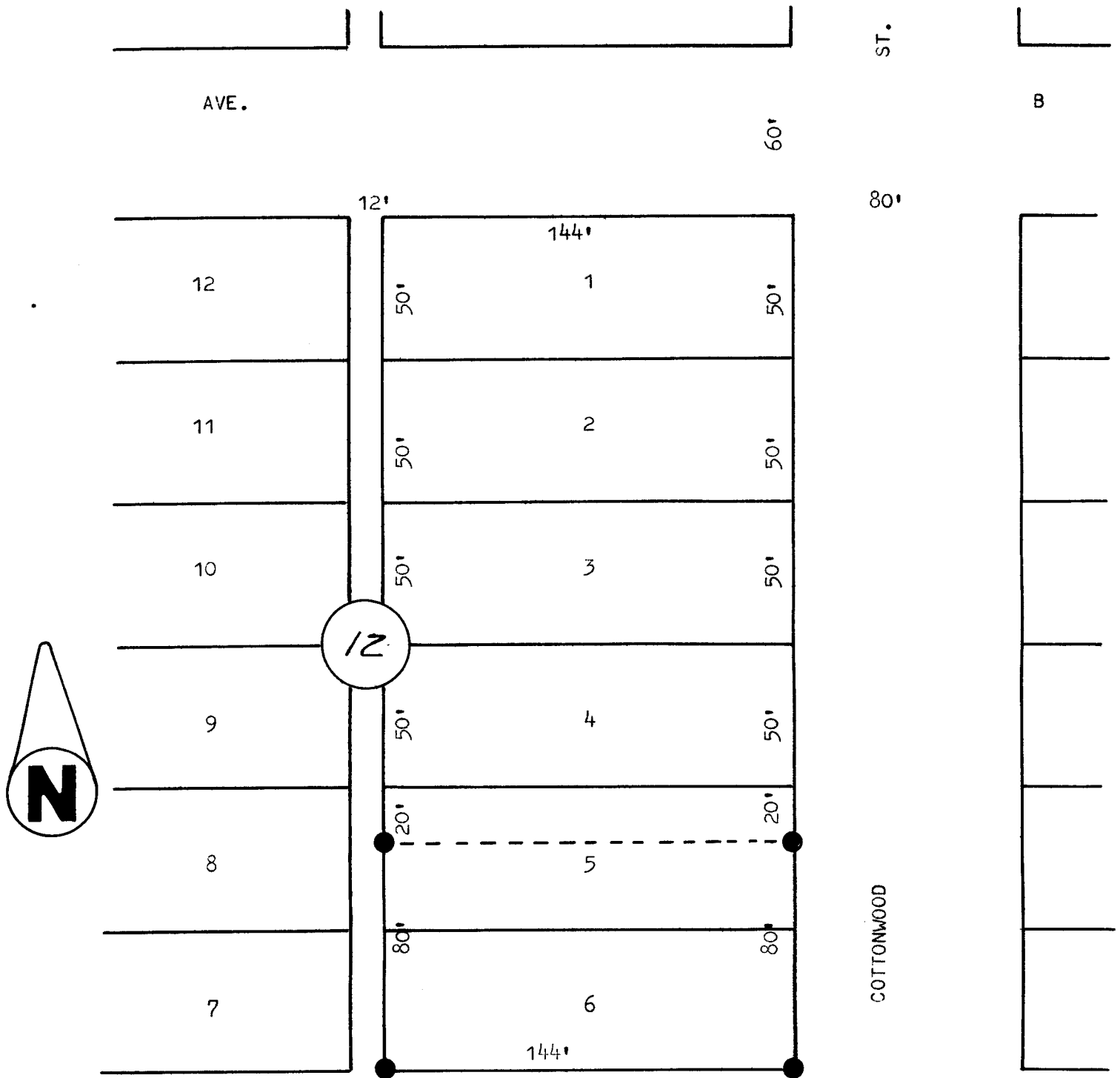


A SURVEY OF LOTS 5 & 6, BLOCK 12  
BOWKER'S ADD. TO THE CITY OF  
MC PHERSON, KANSAS



● PINS SET AND FOUND THIS SURVEY

STATE OF KANSAS )  
COUNTY OF MCPHERSON ) SS

I, FRANCIS RANKIN, COUNTY ENGINEER OF MCPHERSON COUNTY, KANSAS, DO HEREBY CERTIFY THAT I DID CAUSE TO BE DONE ON THE 24TH DAY OF JUNE, 1963, A SURVEY OF LOTS 5 AND 6, BLOCK 12 OF BOWKER'S ADDITION TO THE CITY OF MCPHERSON, KANSAS, AND THAT THE ACCOMPANYING PLAT IS A TRUE EXHIBIT OF SAID SURVEY AS FAR AS IT IS KNOWN TO ME.

SURVEY CALLED FOR BY PETERS LUMBER CO.

SIGNED THIS 25 DAY OF June 1963.

*Francis Rankin*  
FRANCIS RANKIN  
COUNTY ENGINEER  
MCPHERSON COUNTY, KANSAS

