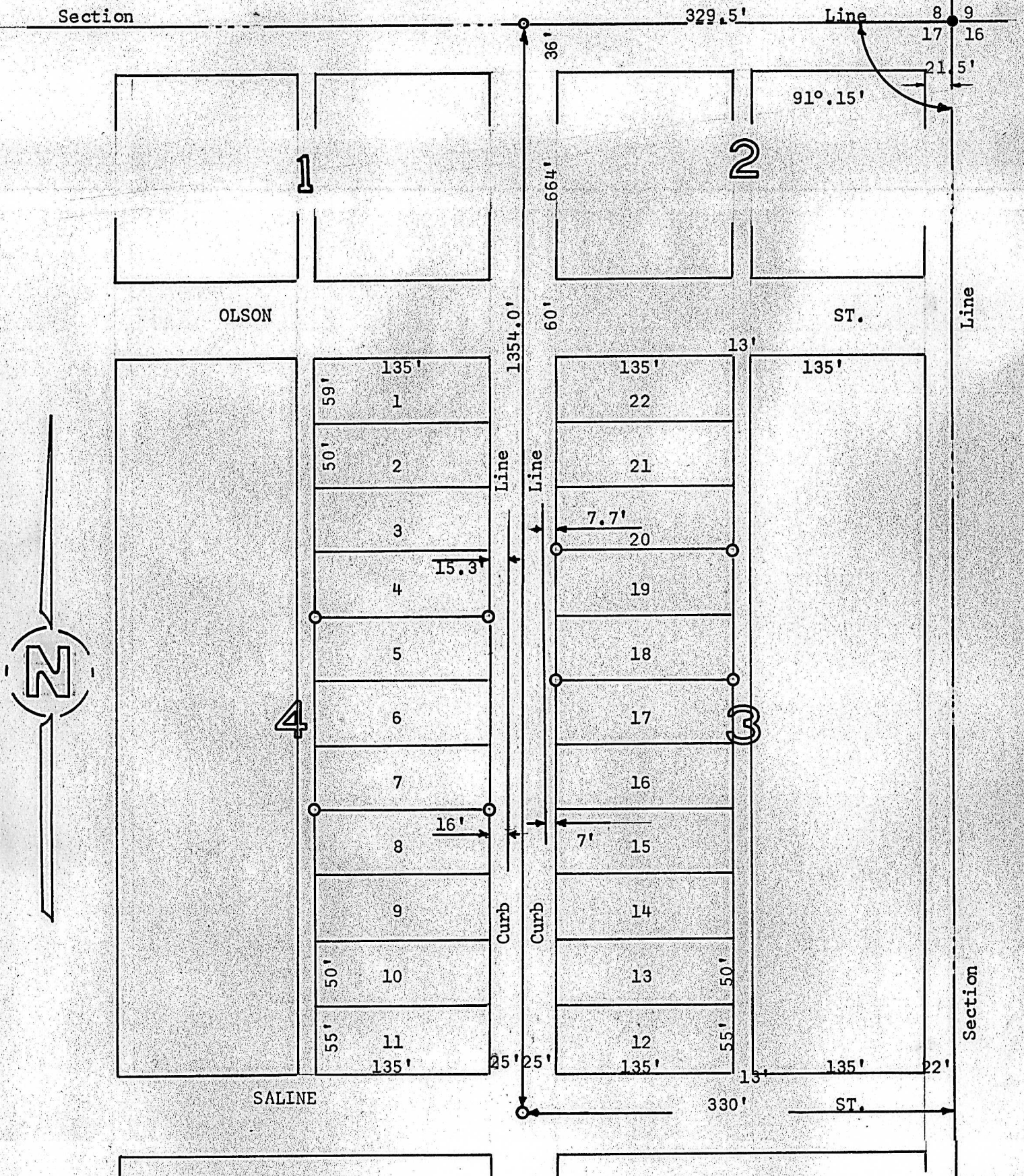


LOTS 5, 6 & 7, BLOCK 4 & LOTS 18 & 19, BLOCK 3
BETHANY ADDITION
LINDSBORG, KANSAS



- Pins Found This Survey
- Pins Set This Survey

State of Kansas)
County of McPherson) SS

I, Francis Rankin, County Engineer of McPherson County, do hereby certify that under my supervision a survey was made of Lots 5, 6 & 7, Block 4 and Lots 18 & 19, Block 3, Bethany Addition to the City of Lindsborg, Kansas and the above plat is a true exhibit of said survey as far as it is known to me.

Survey called for by G. G. Dixon

Signed this 10 day of February 1909

Francis Rankin
Francis Rankin
County Engineer
McPherson, Kansas

