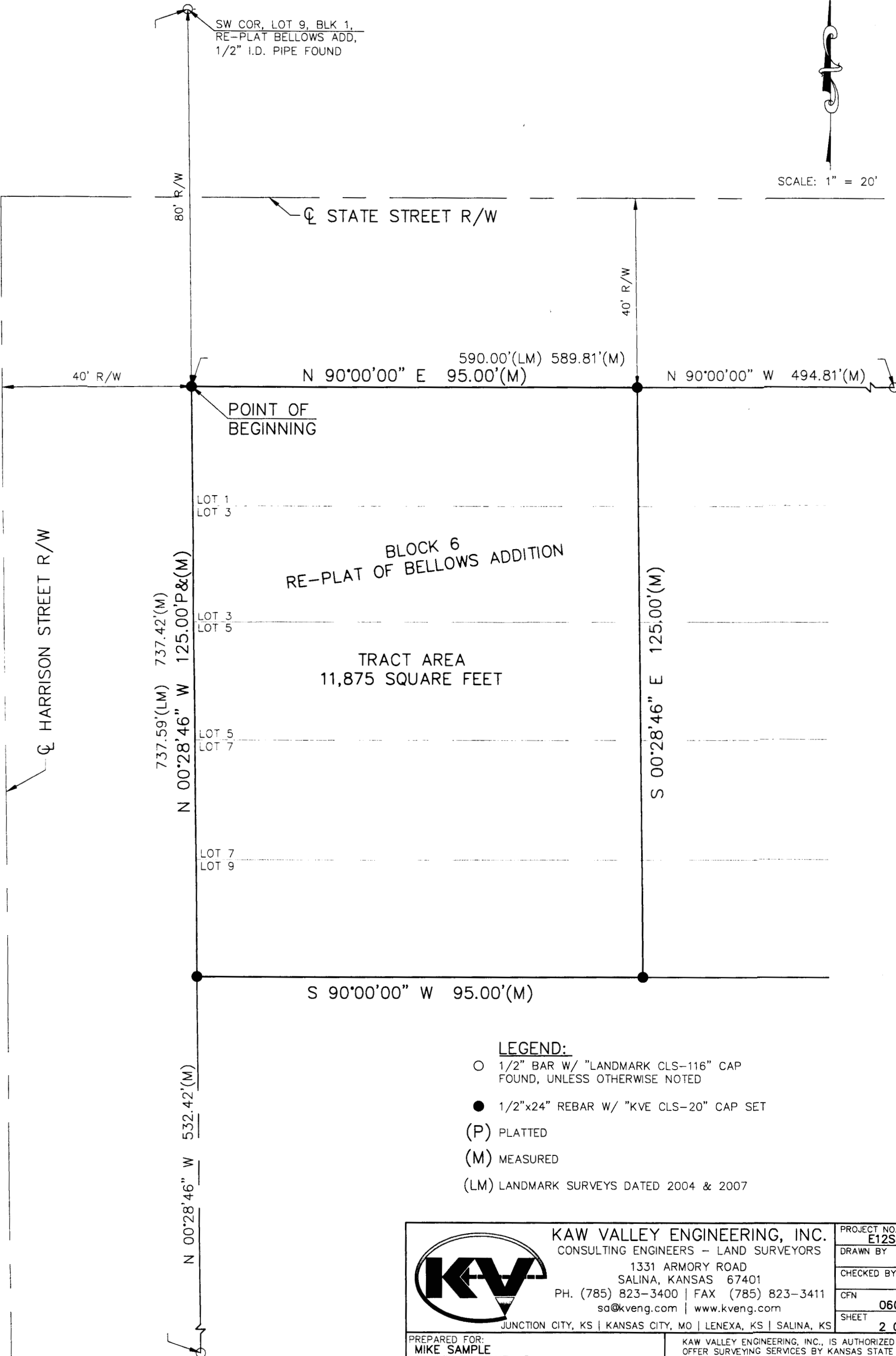



CERTIFICATE OF SURVEY

A PORTION OF LOTS 1, 3, 5, 7, & 9, BLK 6, RE-PLAT BELLOWS ADD, LINDSBORG, MCPHERSON COUNTY, KANSAS



LEGEND:

- 1/2" BAR W/ "LANDMARK CLS-116" CAP FOUND, UNLESS OTHERWISE NOTED
- 1/2"x24" REBAR W/ "KVE CLS-20" CAP SET
- (P) PLATTED
- (M) MEASURED
- (LM) LANDMARK SURVEYS DATED 2004 & 2007

	KAW VALLEY ENGINEERING, INC.		PROJECT NO.
	CONSULTING ENGINEERS - LAND SURVEYORS		E12S0601
	1331 ARMORY ROAD		DRAWN BY
	SALINA, KANSAS 67401		LRR
	PH. (785) 823-3400 FAX (785) 823-3411		CHECKED BY
sd@kveng.com www.kveng.com		CFN	0601CS
JUNCTION CITY, KS KANSAS CITY, MO LENEXA, KS SALINA, KS		SHEET	2 OF 2
PREPARED FOR: MIKE SAMPLE 14 WILLOW LAKE DR. LINDSBORG, KS 67456		KAW VALLEY ENGINEERING, INC., IS AUTHORIZED TO OFFER SURVEYING SERVICES BY KANSAS STATE CERTIFICATE OF AUTHORIZATION NO. LS-20. EXPIRES 12/31/12	