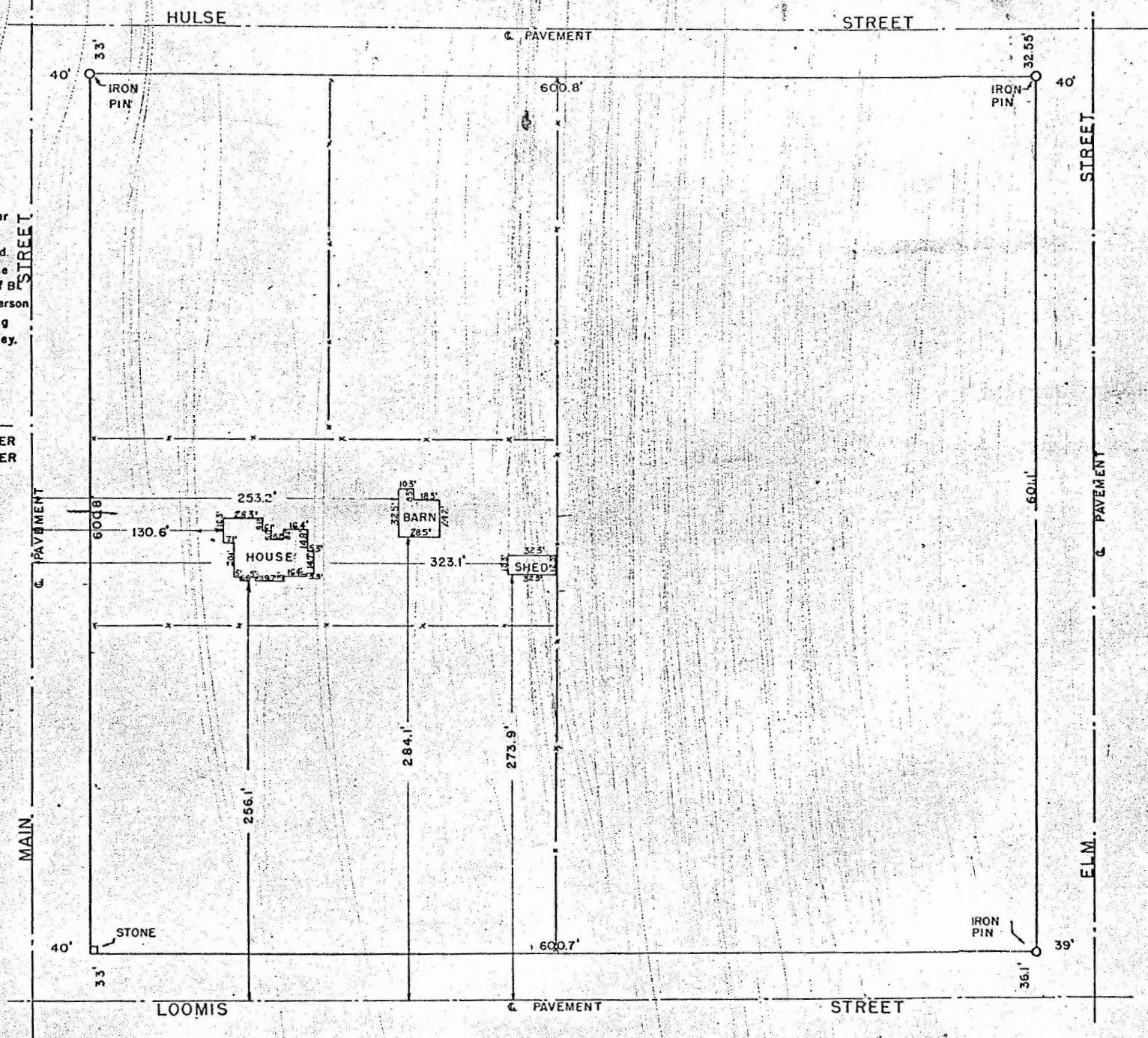


I, Francis D. Wagner, County Engineer of McPherson County, Kansas, do hereby certify that I did on the 2nd day of June, 1950, survey the House Location and determine the Cors. of BL 3 FOUTS ADD. in the city of McPherson Kansas, and that the accompanying plat is a true exhibit of said survey.



BELGARD'S SUB

**MICROFILM**