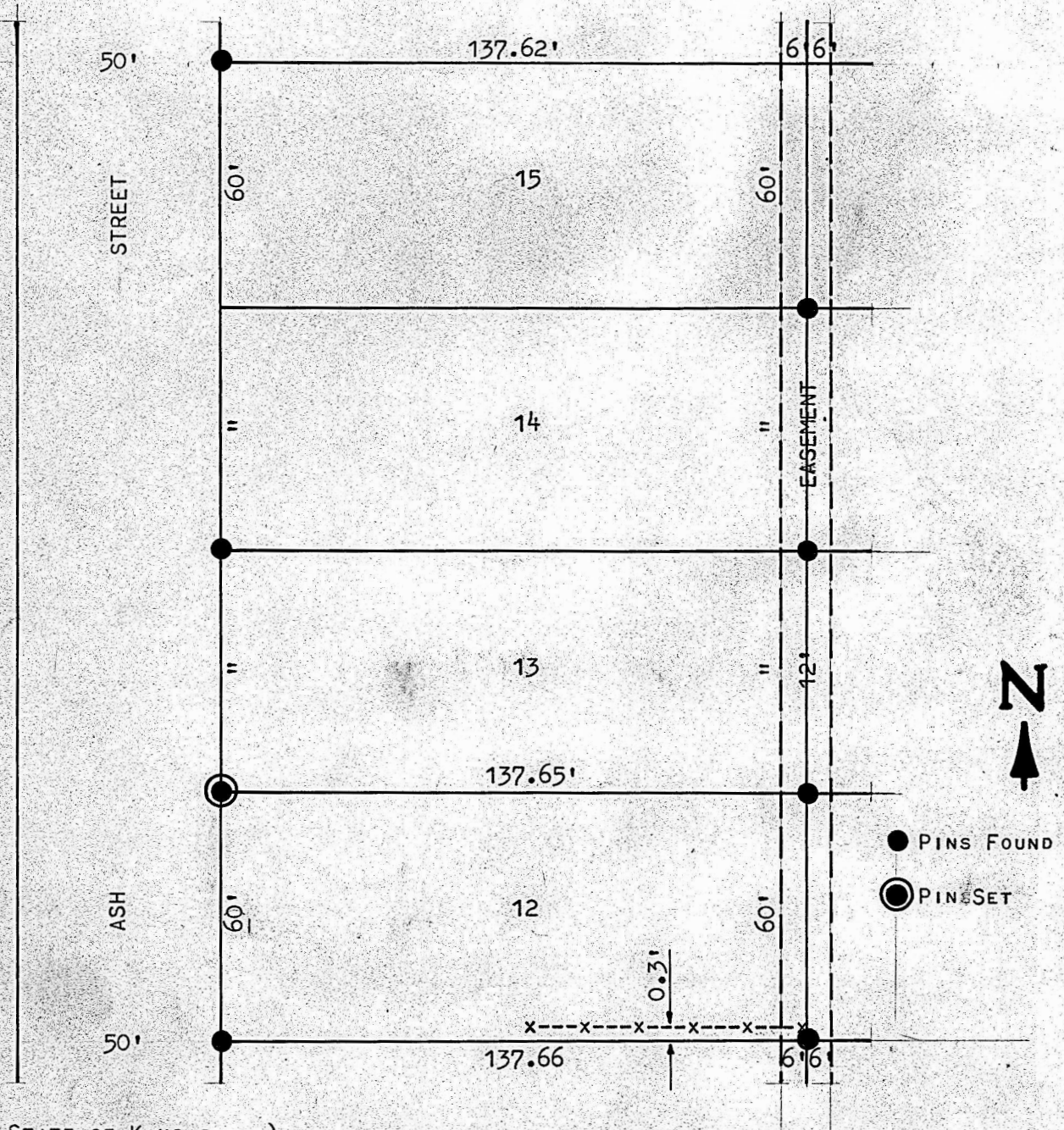


A SURVEY OF LOT 12 BLOCK 1

BELGARD'S SUB-DIVISION

McPHERSON, KANSAS



STATE OF KANSAS)
COUNTY OF McPHERSON) ^{SS}

I, F. R. RANKIN, COUNTY ENGINEER OF McPHERSON COUNTY, KANSAS, DO HEREBY CERTIFY, THAT THE SURVEY WAS MADE UNDER MY SUPERVISION OF LOT 12, BLK. 1 BELGARD'S SUB-DIVISION TO THE CITY OF McPHERSON, AND THE ABOVE PLAT IS A TRUE EXHIBIT OF SAID SURVEY AS FAR AS IT IS KNOWN TO ME.

SURVEY CALLED FOR BY SEGFRED JOHNSON.

SIGNED THIS 18 DAY OF NOVEMBER, 1966.

F. R. Rankin
F. R. RANKIN
COUNTY ENGINEER



MICROFILM 7