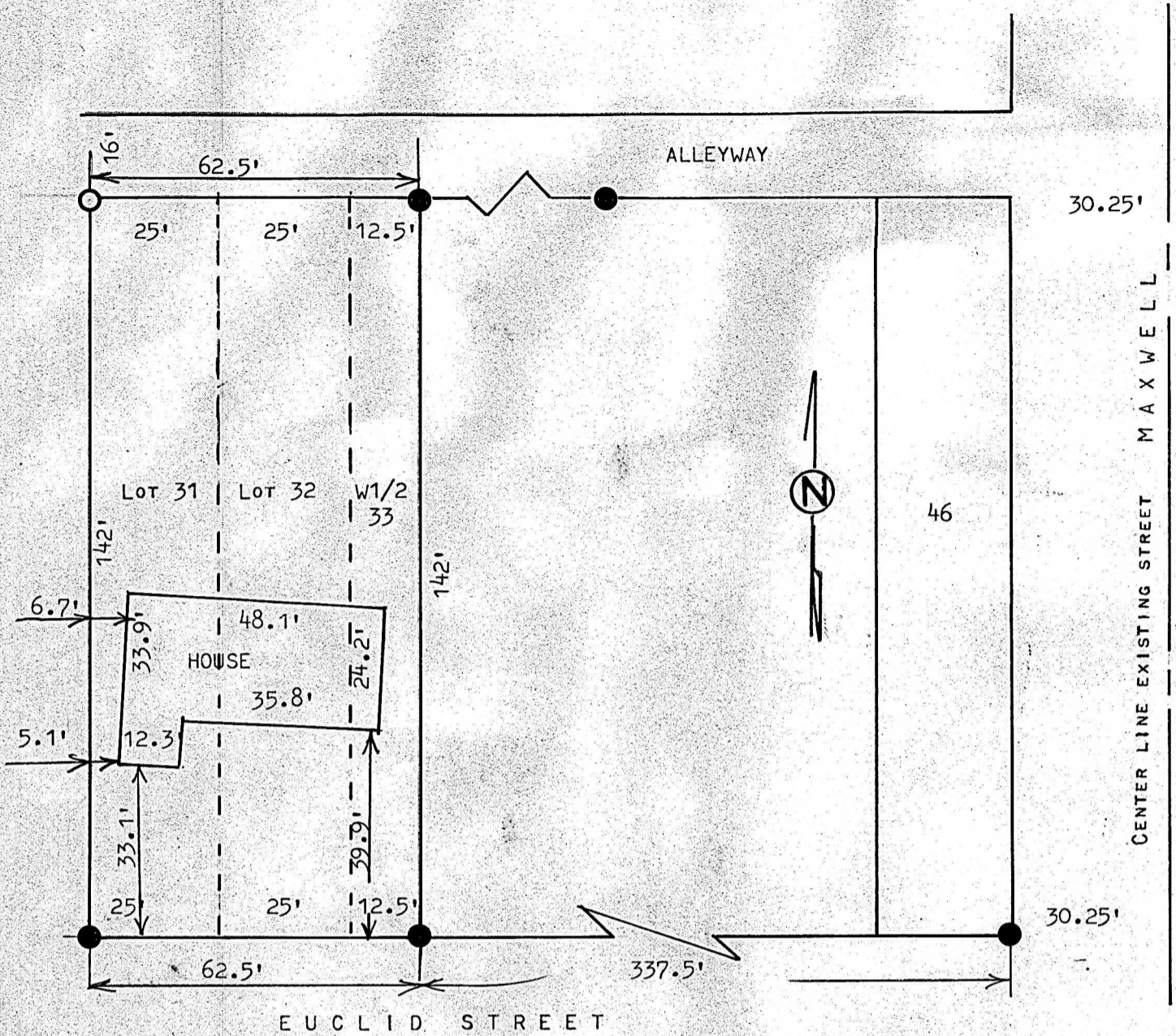


A SURVEY OF LOTS 31, 32, & THE WEST HALF OF LOT 33
BLOCK 2, BASS & IRVIN ADDITION, MCPHERSON, KANSAS



- PINS FOUND THIS SURVEY
- PINS SET THIS SURVEY

STATE OF KANSAS)
COUNTY OF MCPHERSON) SS

I, MELVIN FERGUSON, PROFESSIONAL ENGINEER OF THE STATE OF KANSAS DO HEREBY CERTIFY THAT UNDER MY SUPERVISION A SURVEY WAS MADE OF LOTS 31, 32 AND THE WEST HALF OF LOT 33, BASS & IRVIN ADDITION TO THE CITY OF McPHERSON, KANSAS, AND THAT THE ACCOMPANYING PLAT IS A TRUE EXHIBIT OF SAID SURVEY AS FAR AS IT IS KNOWN TO ME.

SURVEY CALLED FOR BY CHARLES WILLIAMS, MCPHERSON STATE BANK AND TRUST

SIGNED ON THIS 31 DAY OF JULY 1980

MELVIN FERGUSON
PROFESSIONAL ENGINEER
MCIPHERSON, KANSAS

