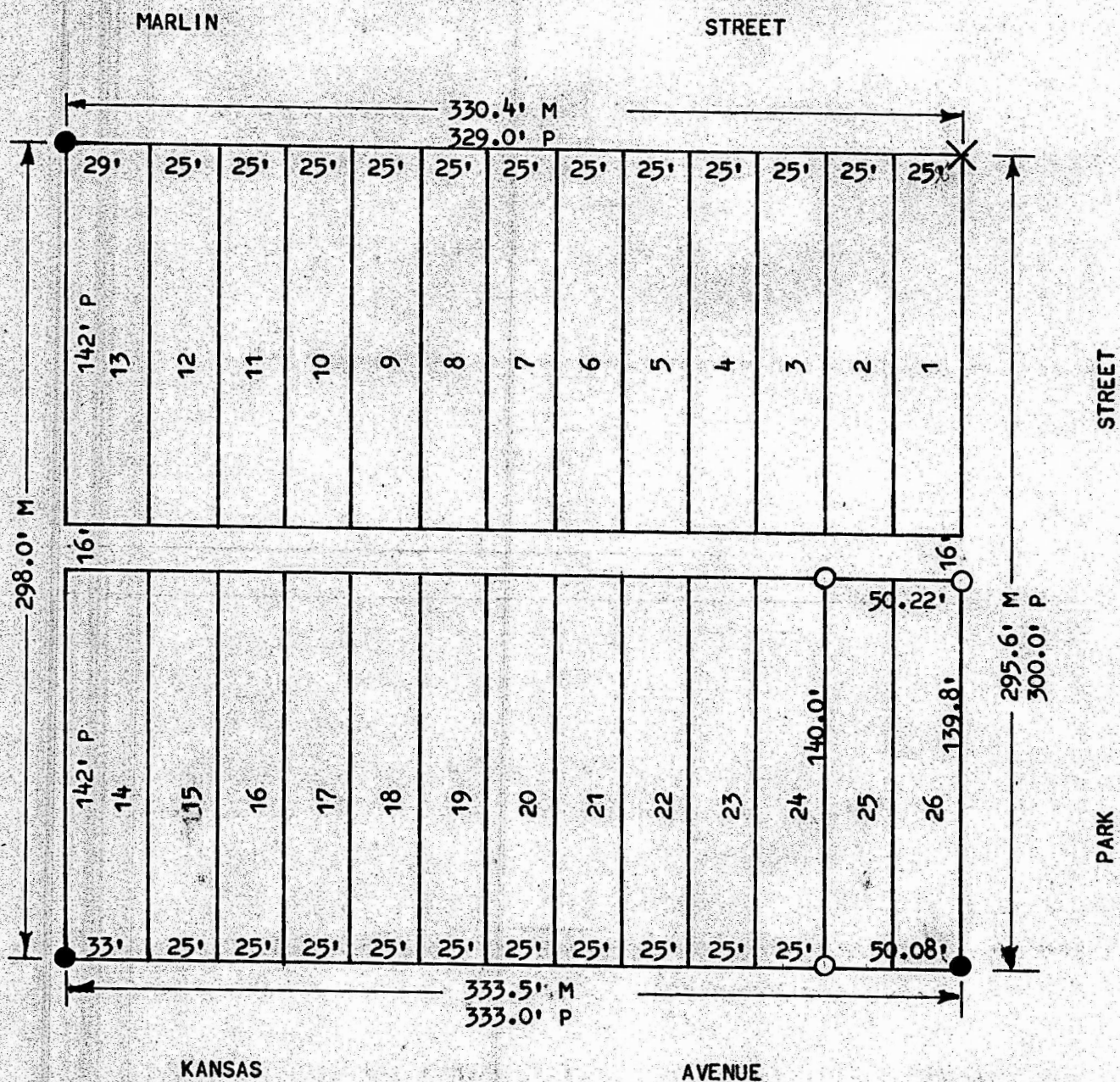


A SURVEY OF LOTS 25 & 26, BLOCK 7,
BASS & IRVING ADDITION,
MCIPHERSON, KANSAS



- PINS FOUND THIS SURVEY
- PINS SET THIS SURVEY
- ✕ " X " IN CONCRETE FOUND

STATE OF KANSAS)
COUNTY OF MCIPHERSON) SS

I, MELVIN FERGUSON, COUNTY ENGINEER OF MCIPHERSON COUNTY, KANSAS, DO HEREBY CERTIFY THAT UNDER MY SUPERVISION A SURVEY WAS MADE OF LOTS 25 AND 26, BLOCK 7, BASS & IRVING'S ADDITION TO THE CITY OF MCIPHERSON, KANSAS, AND THAT THE ABOVE PLAT IS A TRUE EXHIBIT OF SAID SURVEY AS FAR AS IT IS KNOWN TO ME.

SURVEY CALLED FOR BY DARRELL DOMBAUGH.

SIGNED THIS 19th DAY OF AUGUST, 1974.

Melvin Ferguson
MELVIN FERGUSON
COUNTY ENGINEER
MCIPHERSON COUNTY, KANSAS

