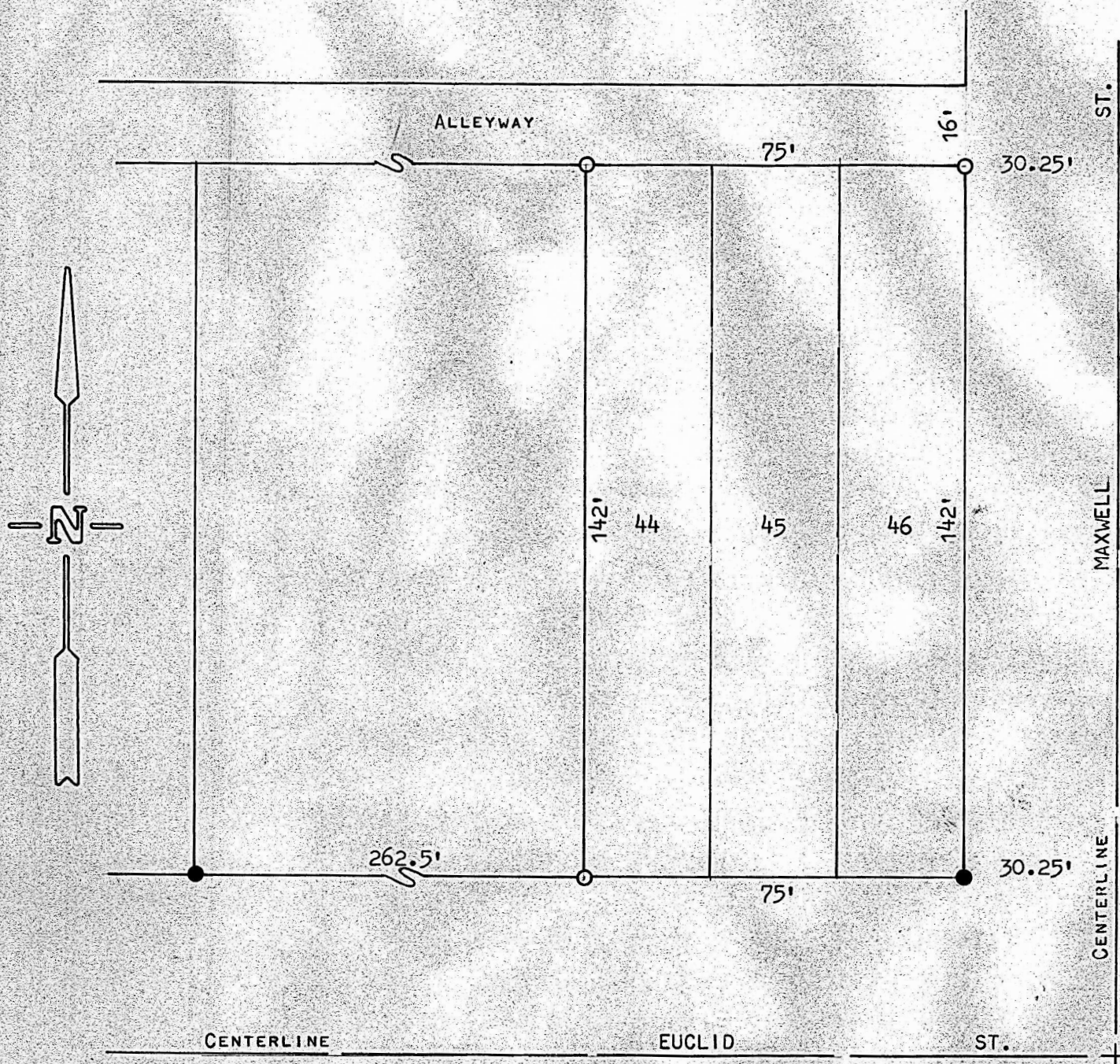


A SURVEY OF LOTS 44, 45 & 46 IN BLOCK 2, BASS & IRVIN
ADDITION TO THE CITY OF McPHERSON, KANSAS



- PINS FOUND THIS SURVEY
- PINS SET THIS SURVEY

STATE OF KANSAS) ss
COUNTY OF McPHERSON)

I, F. R. RANKIN, COUNTY ENGINEER OF McPHERSON COUNTY, KANSAS DO
HEREBY CERTIFY THAT UNDER MY SUPERVISION A SURVEY WAS MADE OF LOTS
44, 45 & 46 IN BLOCK 2, BASS & IRVIN ADDITION TO THE CITY OF McPHERSON,
KANSAS, AND THE ABOVE PLAT IS A TRUE EXHIBIT OF SAID SURVEY AS FAR AS
IT IS KNOWN TO ME.

SURVEY CALLED FOR BY D. ROTHROCK.

SIGNED ON THIS 3 DAY OF APRIL, 1934
F. R. Rankin
F. R. RANKIN
COUNTY ENGINEER
McPHERSON Co., KANSAS

(Professional Engineer Seal: F. R. RANKIN, LICENSE NO. 799, KANSAS, PROFESSIONAL ENGINEER)