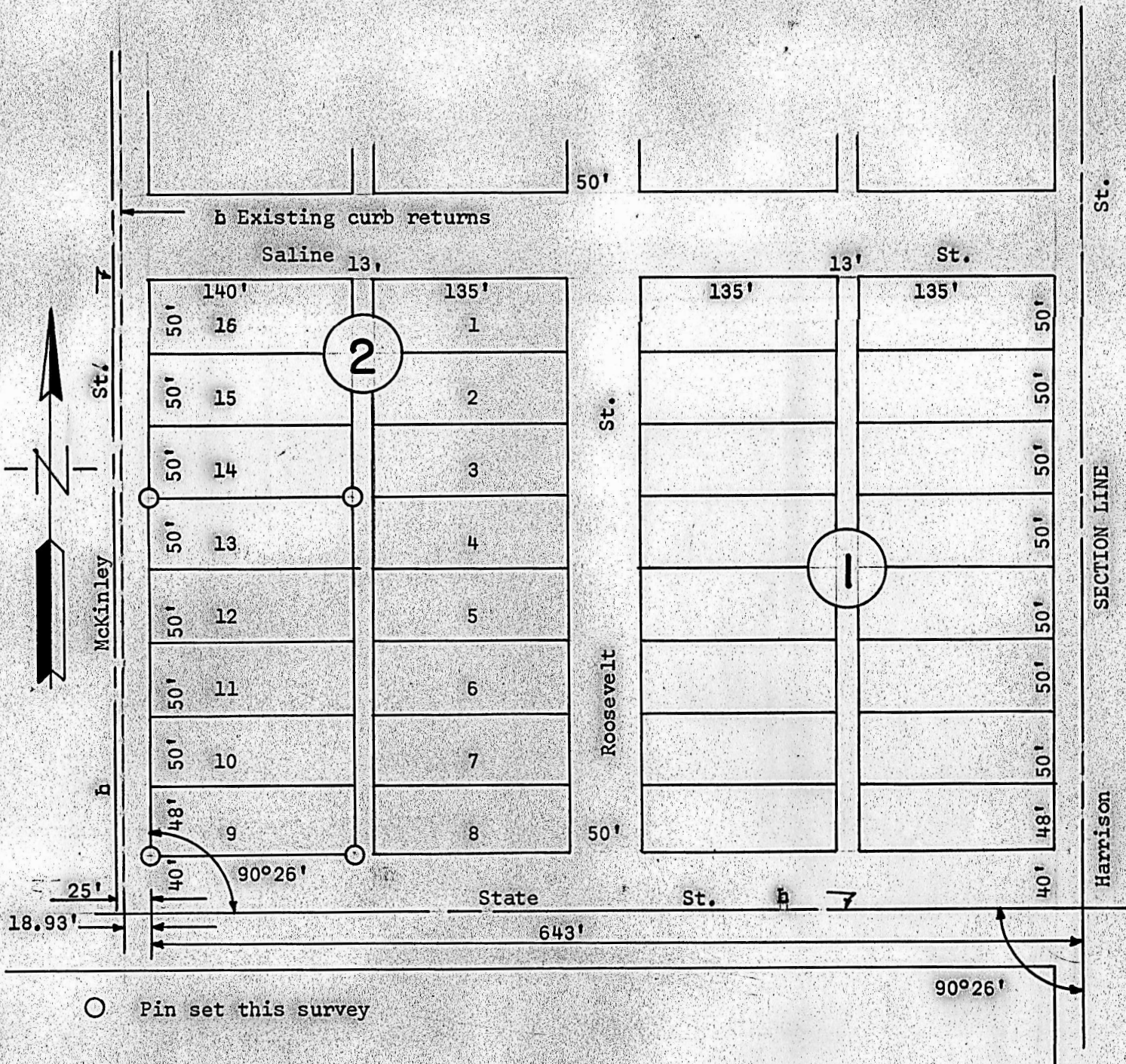


A SURVEY OF LOTS 9, 10, 11, 12, 13  
BLOCK 2, ANDERSON SUB-DIVISION  
LINDSBORG, KANSAS



State of Kansas       )  
County of McPherson)SS

I, Francis R. Rankin, County Engineer, McPherson County, Kansas, do hereby certify that the above survey was made under my supervision of Lots 9, 10, 11, 12, 13, Block 2, Anderson Sub-Division, to the City of Lindsborg and that the above plat is true and correct so far as it is known to me.

Survey called for by Vernal W. Blomberg

Signed this 29th day of May 1963

Francis Jackson

Francis Rankin  
County Engineer  
McPherson, Kansas



**MICROPHONE**

\$35.00