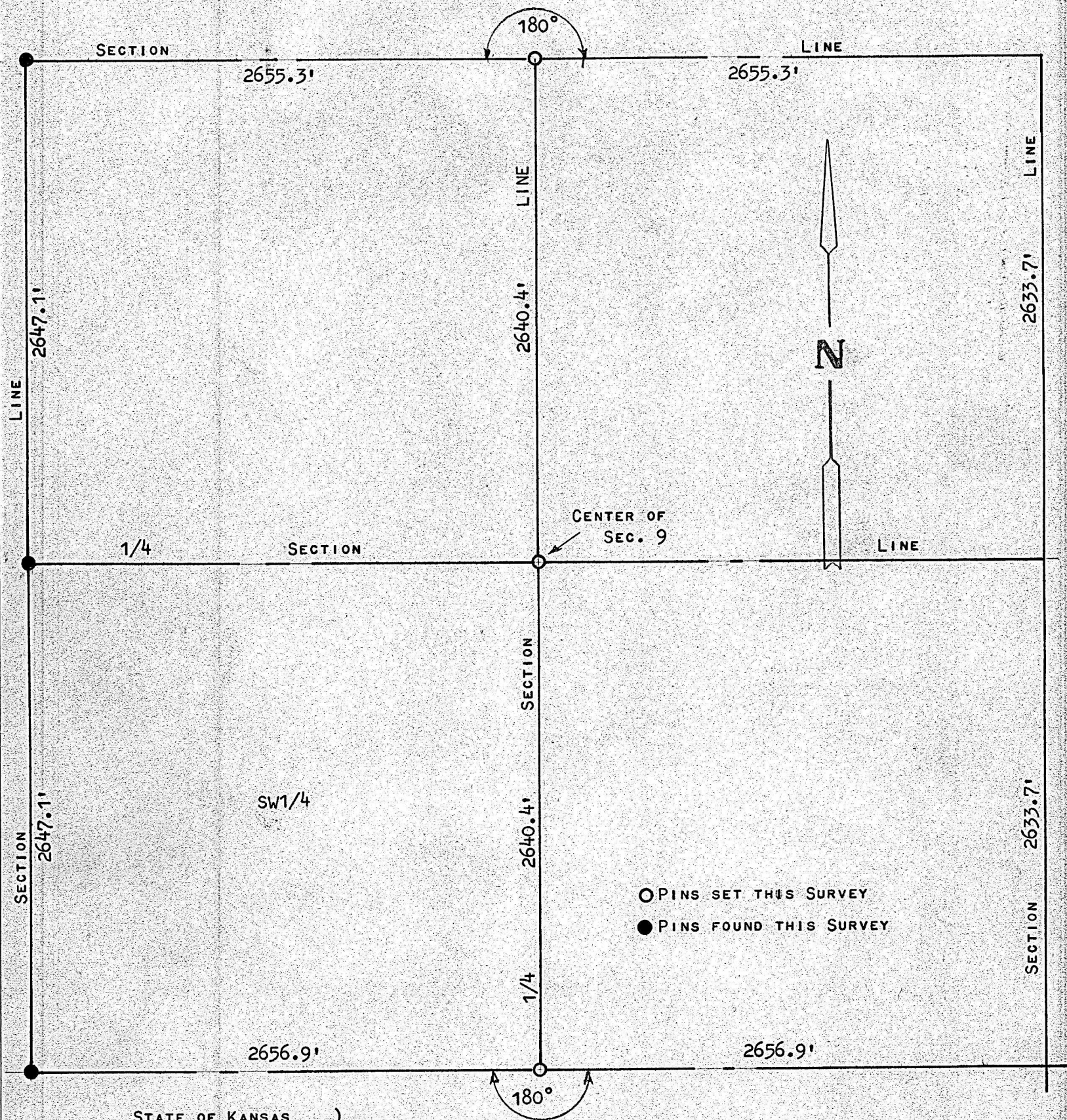


A SURVEY OF THE SW1/4 OF SECTION 9, T21S-R3W  
McPHERSON COUNTY, KANSAS



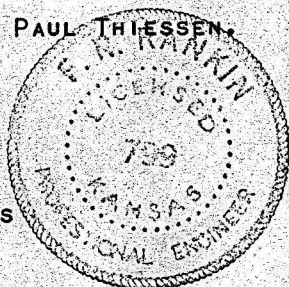
STATE OF KANSAS )  
COUNTY OF McPHERSON ) ss

I, FRANCIS RANKIN, COUNTY ENGINEER OF McPHERSON CO., KANSAS, DO HEREBY CERTIFY THAT AND THAT UNDER MY SUPERVISION A SURVEY WAS MADE OF THE SW1/4 OF SECTION 9, T21S R3W OF THE 6TH P.M. AND THAT THE ABOVE PLAT IS A TRUE EXHIBIT OF SAID SURVEY AS FAR AS IT IS KNOWN TO ME.

SURVEY CALLED FOR BY PAUL THIESSEN.

*F. R. Rankin*  
F. R. RANKIN

COUNTY ENGINEER  
McPHERSON CO., KANSAS



MICROFILM

SIGNED ON THIS 24 DAY OF DECEMBER, 1970.

SURVEY NOTES IN BK. 5 RANGE 3 PP. 85 & 86