

- LEGEND**
- △ - Sectional Monument Found
  - - Survey Monument Found
  - - Fd. 5/8" Rebar w/GSS Cap unless otherwise noted
  - - 5/8" x 24" Iron Rebar Set w/G.S.S. Cap
  - (C) - Calculated
  - (M) - Measured
  - (R) - Record measurement
  - (PS) - Previous Survey by LS 1297 Dated 7/5/2005
  - (PS1) - Previous Survey GSS Project #G2013-359

**DESCRIPTION:**

**TRACT 1**

A portion of the Southeast Quarter, a portion of the South Half of the Northeast Quarter and a portion of the South Half of the Southwest Quarter of Section 9, Township 21 South, Range 2 West of the 6th Principal Meridian, McPherson County, Kansas, described as follows by Nicholas D. Schmidt, PS #1492, this 25th day of October, 2023:

Beginning at the Southeast corner of said Southwest Quarter; thence on a NAD 83 Kansas South Zone bearing of North 89°57'01" West on the South line of said Southwest Quarter a distance of 388.49 feet; thence North 00°34'59" West a distance of 1325.90 feet to the North line of said South Half of the Southwest Quarter; thence South 89°59'47" East on said North line a distance of 392.12 feet to the Northeast corner of said South Half; thence North 00°29'29" West on the West line of said Southeast Quarter a distance of 1326.19 feet to the Northwest corner of said Southeast Quarter; thence North 00°27'32" West on the West line of said Northeast Quarter a distance of 660.00 feet (Record); thence North 89°57'26" East parallel with the South line of said Northeast Quarter a distance of 972.89 feet (975.03 Record); thence South 00°02'34" East perpendicular to said South line a distance of 660.00 feet to said South line; thence North 89°57'26" East on said South line a distance of 1664.97 feet (Record) to the Northeast corner of said Southeast Quarter; thence South 00°33'52" East on the East line of said Southeast Quarter a distance of 2654.26 feet to the Southeast corner of said Southeast Quarter; thence South 89°59'51" West on the South line of said Southeast Quarter a distance of 2637.99 feet to the point of beginning.

Containing 187.09 Acres and subject to road right of way easements along the South and East lines thereof, and any other easements or restrictions of record.

**TRACT 2**

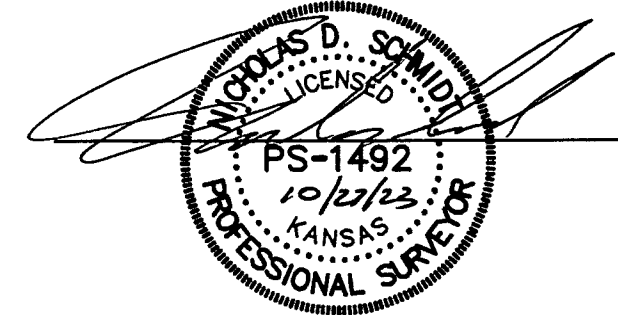
A portion of the South Half of the Southwest Quarter of Section 9, Township 21 South, Range 2 West of the 6th Principal Meridian, McPherson County, Kansas, described as follows by Nicholas D. Schmidt, PS #1492, this 25th day of October, 2023:

Commencing at the Southeast corner of said Southwest Quarter; thence on a NAD 83 Kansas South Zone bearing of North 89°57'01" West on the South line of said Southwest Quarter a distance of 388.49 feet; thence continuing North 89°57'01" West on said South line a distance of 2252.45 feet to the Southwest corner of said Southwest Quarter; thence North 00°27'40" West on the West line of said Southwest Quarter a distance of 1324.05 feet to the Northwest corner of said South Half of the Southwest Quarter; thence South 89°59'47" East on the North line of said South Half a distance of 2249.62 feet to a point 392.12 feet West of the Northeast corner of said South Half; thence South 00°34'59" East a distance of 1325.90 feet to the point of beginning.

Containing 68.47 Acres and subject to road right of way easements along the South and West lines thereof, and any other easements or restrictions of record.

**SURVEYOR'S CERTIFICATE:**

I hereby certify this plat to be a true, correct and complete representation of the property described hereon, as surveyed under my supervision, this 27th day of October, 2023.



Prepared For:		Description:	
NYLA M. STUCKY TRUST		A PORTION OF THE E 1/2 & SW 1/4 SECTION 9, T21S, R02W McPHERSON COUNTY, KANSAS	
Prepared By:		Garber Surveying Service, P.A.	
HUTCHINSON 2908 North Plum St. 67502 Ph. 620-465-7032 (Main Office)		BRANCH OFFICES: MANHATTAN Ph. 785-320-4810 MCPHERSON Ph. 620-241-4441 NEWTON Ph. 316-283-3053 SALINA Ph. 785-404-6302 WICHITA Ph. 316-260-9933	
Drawn By: CDS	Scale: 1"=300'	Date of Field Work: August 31, 2023	Job No:
Checked By: NDS	Date: 10/27/2023	Sheet 1 of 1 Sheet(s)	G2023-601