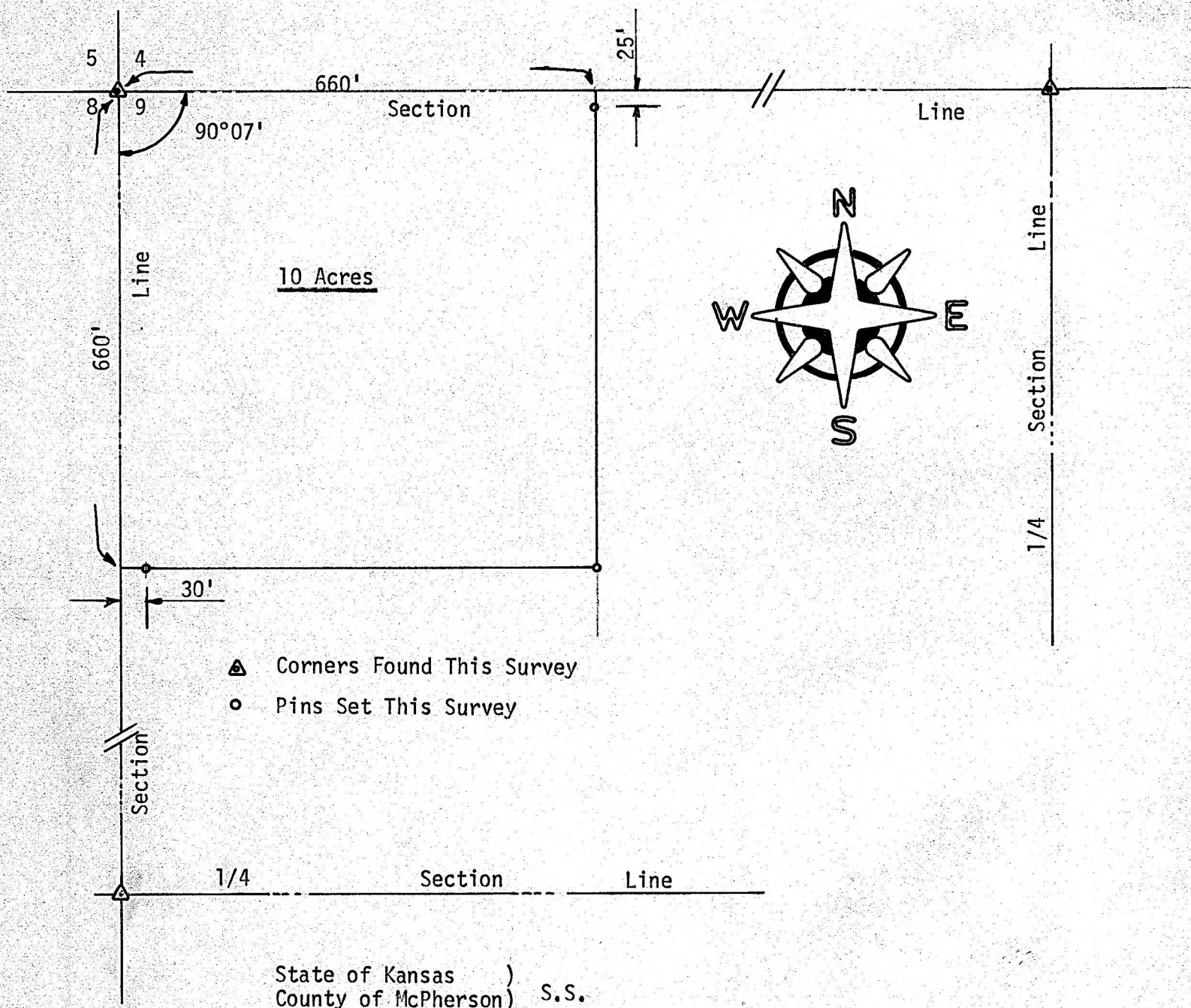


SURVEY A TRACT OF LAND IN THE
NW 1/4 SECTION 9, T20S, R4W
MC PHERSON COUNTY, KANSAS



I, F. R. Rankin, County Engineer of McPherson County, Kansas, do hereby certify that under my supervision a survey was made in the NW 1/4 Section 9, T20S, R4W of the 6th P.M. and described as follows: Beginning at the NW corner of said NW 1/4; thence South on the West line of said NW 1/4, 660 feet; thence East 660 feet; thence North 660 feet to the North line of said NW 1/4; thence West 660 feet to the place of beginning. The land herein described contains 10 acres and the above plat is a true exhibit of said survey as far as it is known to me.

Survey requested by Gary Hostetler

Signed this 10 day of December 1973

F. R. Rankin
F. R. Rankin, P. E.
Administrator of P.W. & County Engr.
McPherson County, Kansas 1973

