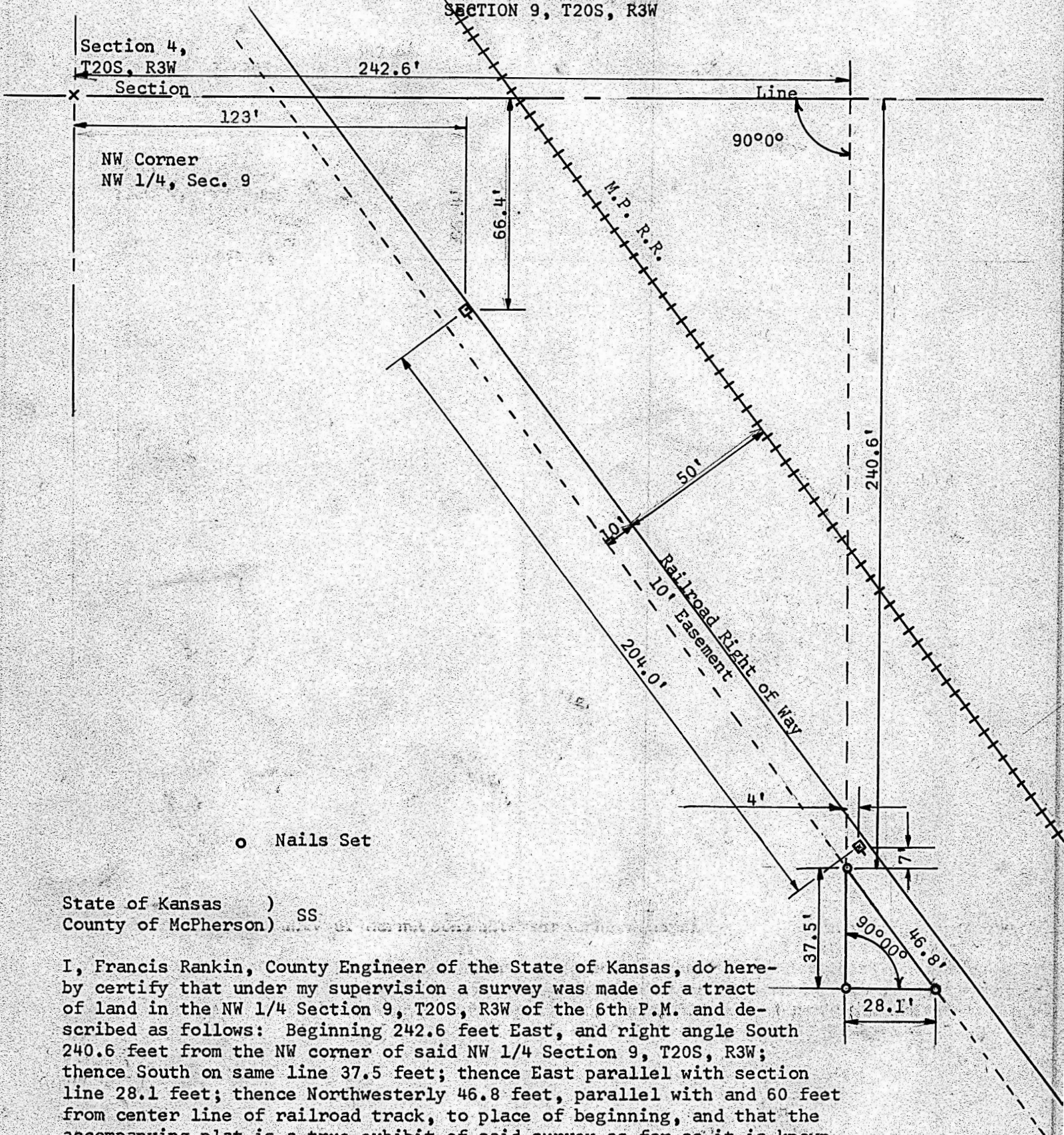


A SURVEY IN THE NW 1/4
SECTION 9, T20S, R3W



State of Kansas)
County of McPherson) SS

I, Francis Rankin, County Engineer of the State of Kansas, do hereby certify that under my supervision a survey was made of a tract of land in the NW 1/4 Section 9, T20S, R3W of the 6th P.M. and described as follows: Beginning 242.6 feet East, and right angle South 240.6 feet from the NW corner of said NW 1/4 Section 9, T20S, R3W; thence South on same line 37.5 feet; thence East parallel with section line 28.1 feet; thence Northwesterly 46.8 feet, parallel with and 60 feet from center line of railroad track, to place of beginning, and that the accompanying plat is a true exhibit of said survey as far as it is known to me.

Survey called for by Crown (Water & Light Co.)

Signed this 25 day of March, 1968

Francis Rankin
Francis Rankin
County Engineer
McPherson, Kansas

