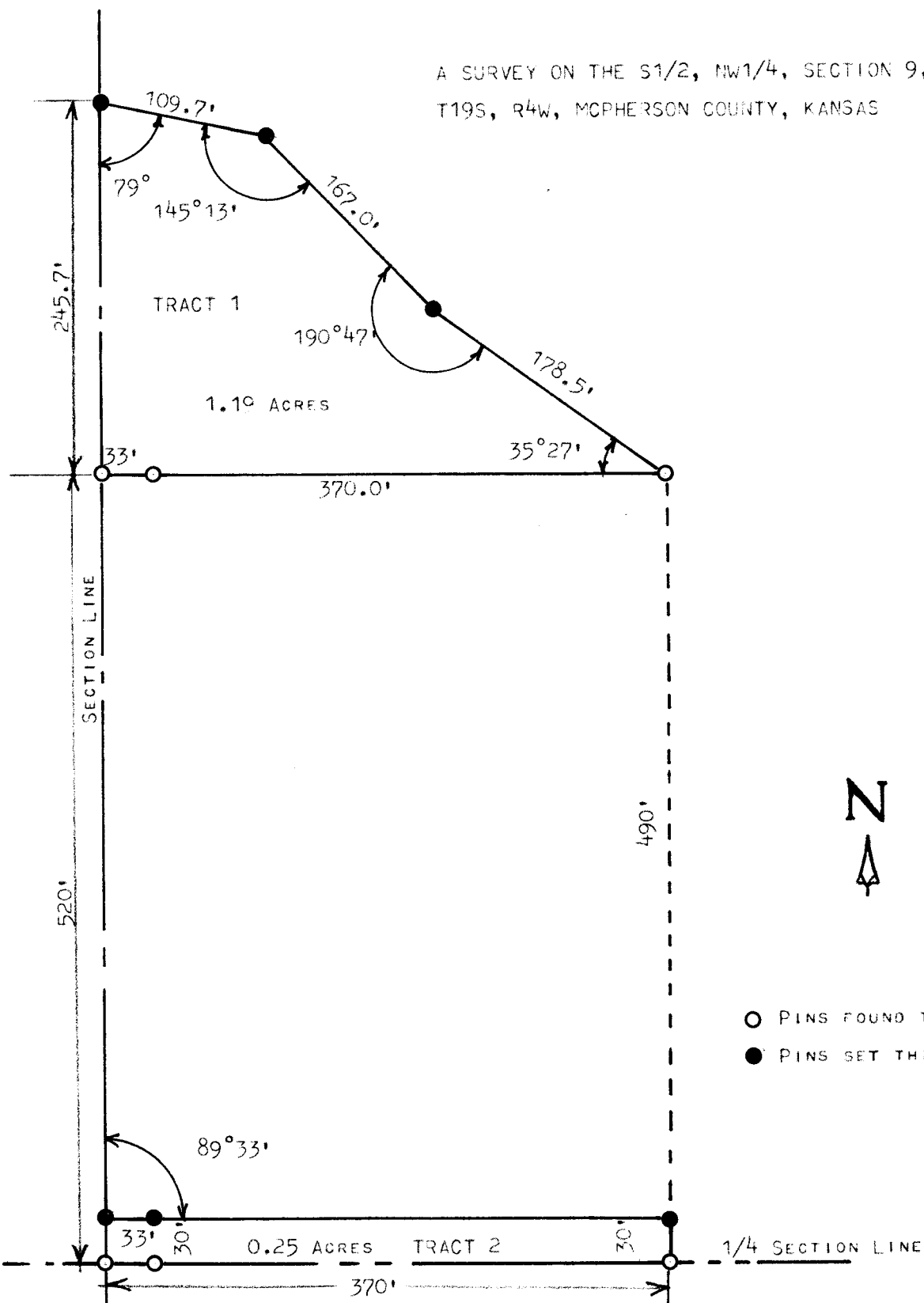


A SURVEY ON THE S1/2, NW1/4, SECTION 9,
T19S, R4W, MCPHERSON COUNTY, KANSAS



STATE OF KANSAS)
COUNTY OF MCPHERSON) SS

I, MELVIN FERGUSON, PROFESSIONAL ENGINEER OF THE STATE OF KANSAS, DO HEREBY CERTIFY THAT UNDER MY SUPERVISION A SURVEY WAS MADE IN THE S1/2, NW1/4, SECTION 9, T19S, R4W OF THE 6TH P.M. AND DESCRIBED AS FOLLOWS;

TRACT 1

BEGINNING 520 FEET NORTH OF THE SW CORNER OF SAID S1/2, NW1/4, SECTION 9, T19S, R4W; THENCE EAST PARALLEL WITH 1/4 SECTION LINE 370 FEET; THENCE NORTHWESTERLY INTERIOR ANGLE OF 35° 27' AND A DISTANCE OF 178.5 FEET; THENCE NORTHWESTERLY INTERIOR ANGLE OF 190° 47' A DISTANCE OF 167.0 FEET; THENCE WESTERLY INTERIOR ANGLE OF 145° 13' A DISTANCE OF 109.7 FEET, AND TO THE SECTION LINE; THENCE SOUTH ON SECTION LINE 245.7 FEET, AND TO THE PLACE OF BEGINNING, SAID TRACT OF LAND CONTAINS 1.19 ACRES MORE OR LESS.

TRACT 2

BEGINNING AT THE SW CORNER OF SAID S1/2, NW1/4, SECTION 9, T19S, R4W; THENCE EAST ON SECTION LINE 370 FEET; THENCE NORTH 30 FEET; THENCE WEST TO SECTION LINE 370 FEET; THENCE SOUTH ON SECTION LINE 30 FEET AND TO PLACE OF BEGINNING SAID TRACT OF LAND CONTAINS 0.25 ACRES MORE OR LESS,

I ALSO CERTIFY THAT THE ABOVE PLAT IS A TRUE EXHIBIT OF SAID SURVEY AS FAR AS IT IS KNOWN TO ME..

SURVEY CALLED FOR BY CHARLES FRANK
SIGNED THIS 17th DAY OF MARCH, 1976

MELVIN FERGUSON
PROFESSIONAL ENGINEER
MCPHERSON, KANSAS

MCPHERSON