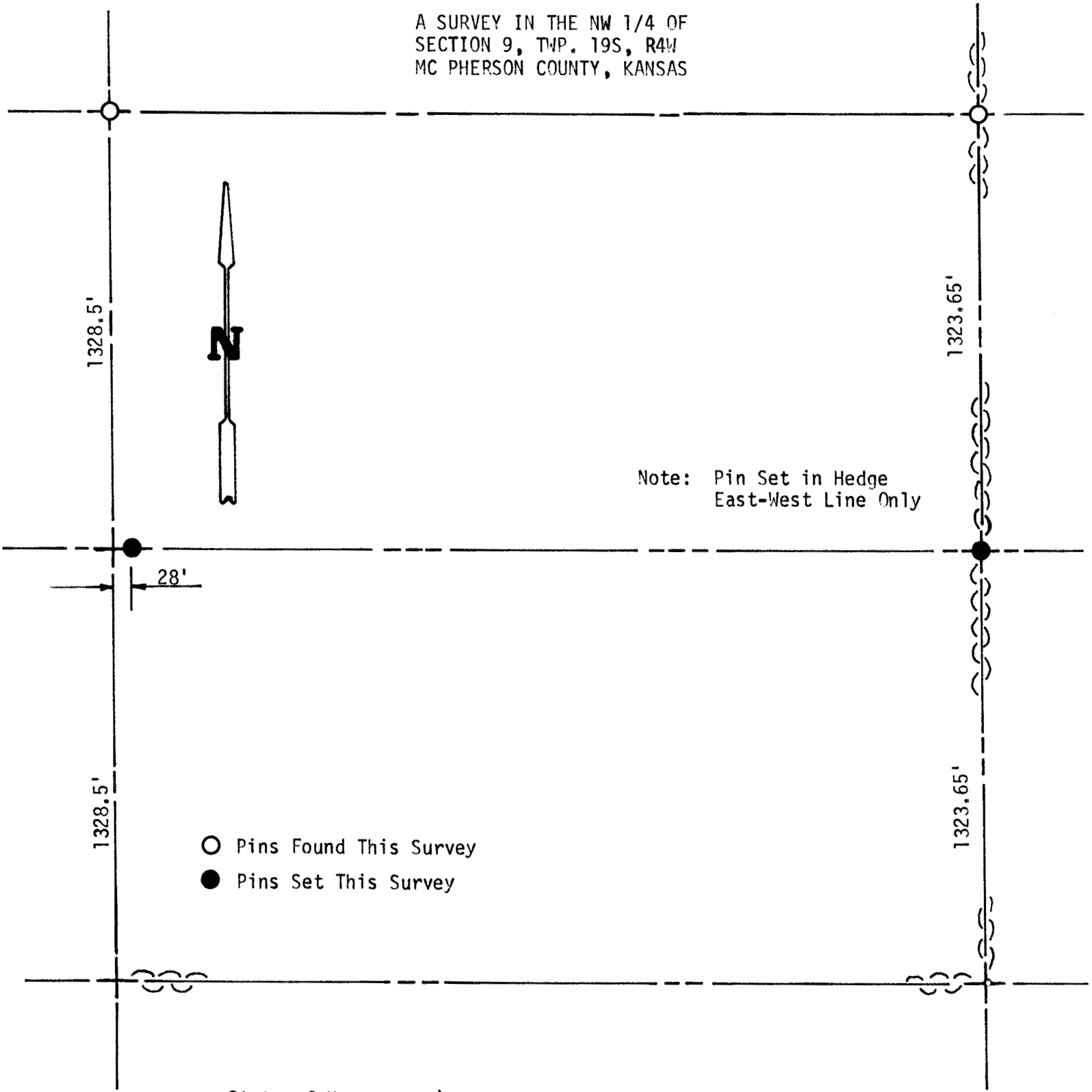


A SURVEY IN THE NW 1/4 OF
SECTION 9, TWP. 19S, R4W
MC PHERSON COUNTY, KANSAS



State of Kansas)
County of McPherson) SS

I, F. R. Rankin, County Engineer of McPherson County, Kansas, do hereby certify that under my supervision a survey was made of a line between the N1/2 and the S1/2 of the NW1/4 of Section 9, T19S, R4W of the 6th P.M. The above plat is a true exhibit of said survey as far as it is known to me.

Survey called for by H. Beam and Dave Campbell

Signed on this 15 day of August, 1972

F. R. Rankin
F. R. Rankin, P. E.
County Engineer
McPherson County, Kansas

