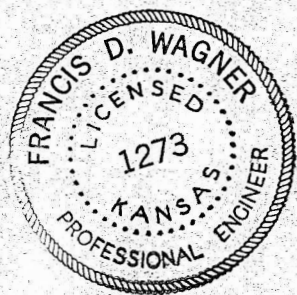
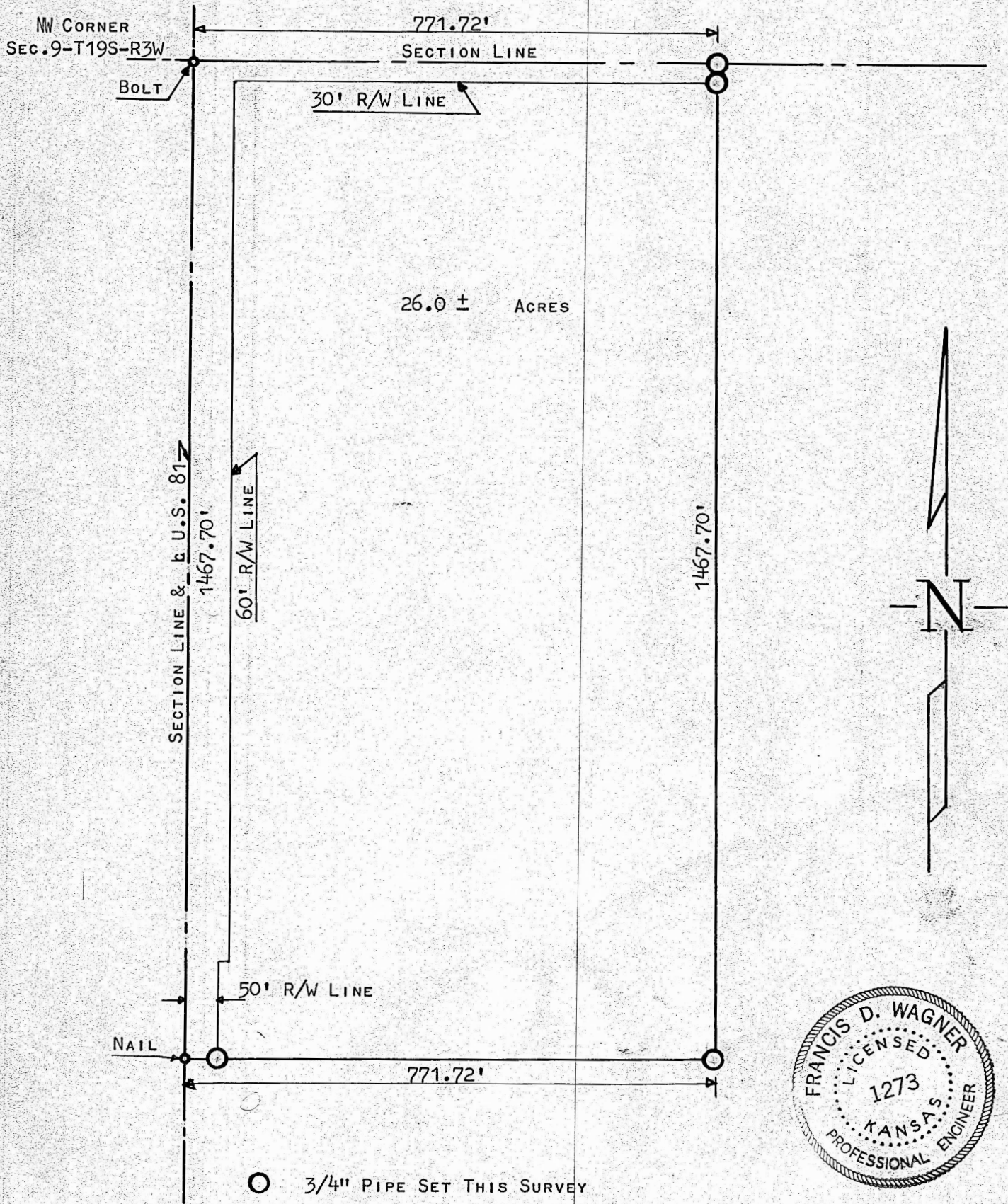


A SURVEY OF A TRACT OF LAND IN
THE NW¹/₄ SECTION 9, T19S, R3W
OF THE 6TH P.M.



STATE OF KANSAS) SS
COUNTY OF McPHERSON)

I, FRANCIS D. WAGNER, COUNTY ENGINEER OF McPHERSON COUNTY, KANSAS DO HEREBY CERTIFY THAT I DID CAUSE TO BE DONE ON THE 12TH DAY OF AUGUST, 1960 A SURVEY OF A TRACT OF LAND IN THE NW¹/₄ SECTION 9, T19S, R3W OF THE 6TH P.M. AND DESCRIBED AS FOLLOWS: - BEGINNING AT THE NW CORNER OF SECTION 9, T19S, R3W; THENCE EAST ON THE SECTION LINE 771.72' FEET; THENCE SOUTH PARALLEL WITH THE WEST SECTION LINE OF SAID SEC. 9 1467.70' FEET; THENCE WEST TO SECTION LINE 771.72' FEET; THENCE NORTH ON SECTION LINE 1467.70' FEET TO THE PLACE OF BEGINNING. SAID TRACT OF LAND CONTAINS 26.0 ACRES MORE OR LESS, AND THAT THE ACCOMPANYING PLAT IS A TRUE EXHIBIT OF SAID SURVEY.

Francis D. Wagner
FRANCIS D. WAGNER
COUNTY ENGINEER
McPHERSON COUNTY

AUGUST 17, 1960