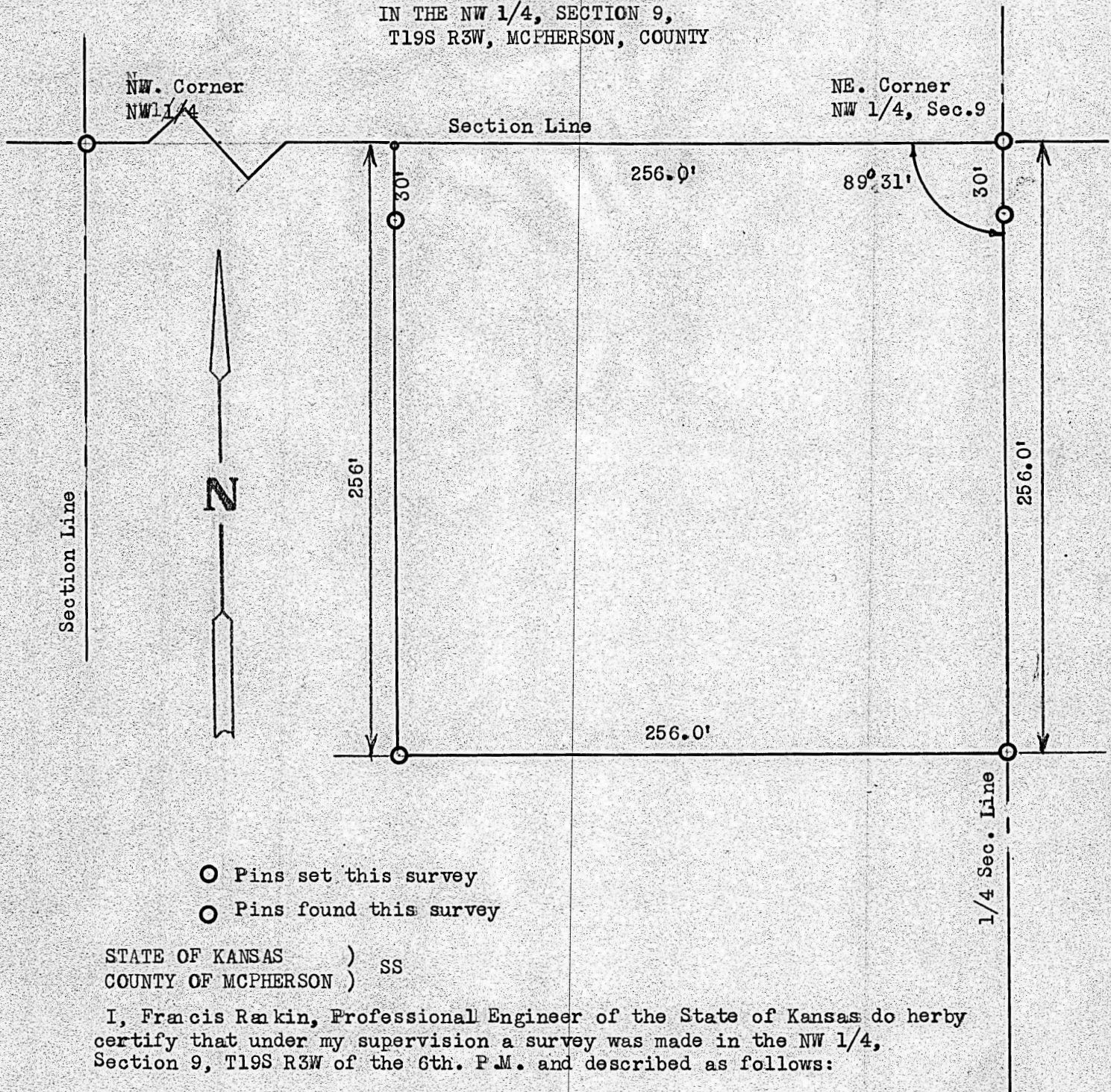


A SURVEY OF A TRACT OF LAND  
IN THE NW 1/4, SECTION 9,  
T19S R3W, MCPHERSON, COUNTY



STATE OF KANSAS )  
COUNTY OF MCPHERSON ) SS

I, Francis Rankin, Professional Engineer of the State of Kansas do hereby certify that under my supervision a survey was made in the NW 1/4, Section 9, T19S R3W of the 6th. P.M. and described as follows:

Commencing at the Northeast corner of said Northwest Quarter, Section 9, T19S R3W; thence South on 1/4 section line 256.0 feet; thence West parallel with section line 256.0 feet; thence North to section line 256.0 feet; thence East on section line 256.0 feet to place of beginning, land herein described contains 1.5 acres more or less, and the the accompanying plat is a true exhibit of said survey as far as it is known to me.

Survey called for by Leland Bartel

Signed this 7 day of February, 1969

*Francis Rankin*  
Francis Rankin  
Professional Engineer  
McPherson, Kansas



MICROFILM