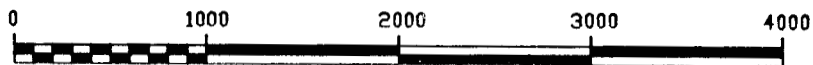


# Agricultural Engineering Associates

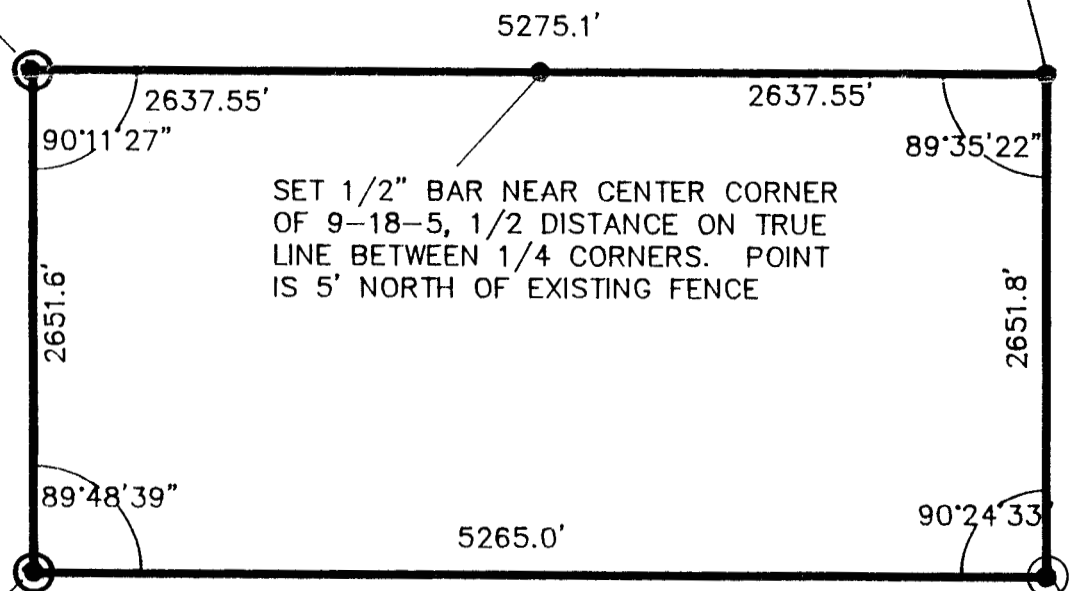


SCALE IN FEET



FOUND 5/8" BAR 24" BELOW GRADE  
AT APPARENT WEST 1/4 CORNER  
OF 9-18-5. SET 1/2" BAR OVER IT.  
REF: PK NAIL IN FENCE POST 36.5'NE.  
PK NAIL IN FENCE POST 24.7'E.  
PK NAIL IN FENCE POST 64.7'SE.

SET 3/4" BAR AT EAST 1/4  
CORNER OF 9-18-5 AT  
INTERSECTION OF FENCES  
N-E-W, NOT IN LINE WITH  
FENCE SOUTH.



SET 1/2" BAR NEAR CENTER CORNER  
OF 9-18-5, 1/2 DISTANCE ON TRUE  
LINE BETWEEN 1/4 CORNERS. POINT  
IS 5' NORTH OF EXISTING FENCE

FOUND 1/2" BAR 8" BELOW GRADE  
AT SW CORNER OF 9-18-5.  
PK NAIL IN CORNER POST 40.6'NW  
PK NAIL IN CORNER POST 43.9'SW  
PK NAIL IN CORNER POST 43.5'SE.

FOUND 1/2" BAR & NAIL AT SE  
CORNER OF 9-18-5.  
PK NAIL IN POST 33.3' NNE  
CENTER USGS BM 32.9' NNW  
PK NAIL IN POST 51.7' NW  
15' S OF N ROAD SURFACE LINE  
8' N OF S ROAD SURFACE LINE

A private survey conducted on 2/15/89 for Summit Producers Co. of the South Half of Section 9, Township 18 South, Range 5 West of the 6th Prime Meridian, McPherson County, Ks.

Said tract contains 320.8 acres more or less.

I, L. Frank Young, do hereby certify the above information to be true and accurate to the best of my knowledge.

L. Frank Young, P.E., RLS  
KS. License # 960