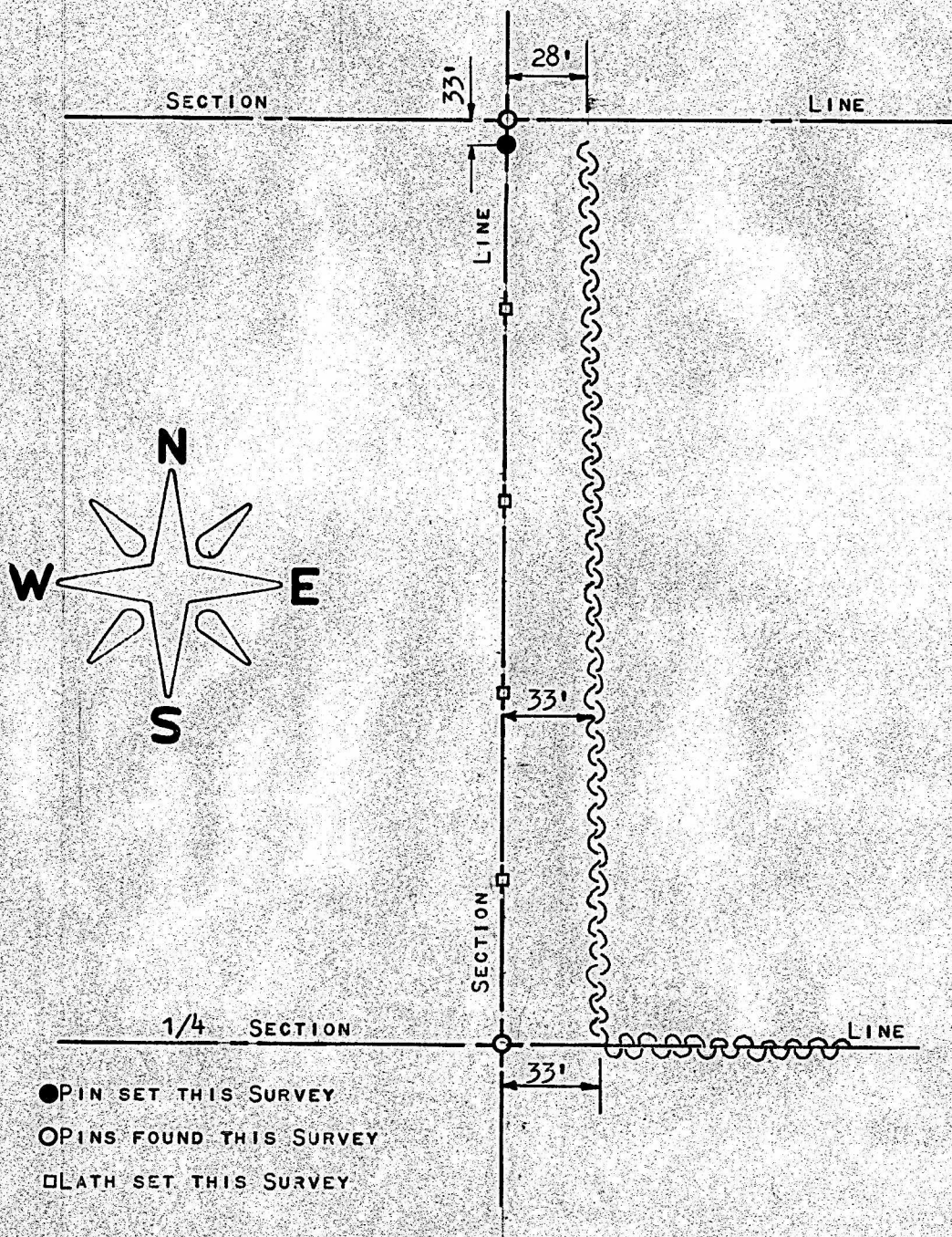


A SURVEY OF THE WEST LINE OF THE NW1/4 OF
SECTION 9, T17S - R5W
McPHERSON Co., KANSAS



STATE OF KANSAS)
COUNTY OF MCPHERSON)^{SS}

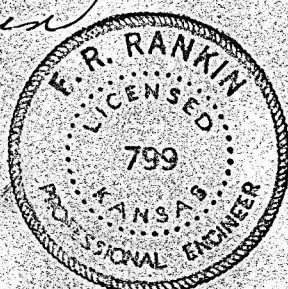
I, FRANCIS R. RANKIN, COUNTY ENGINEER OF MCPHERSON COUNTY, KANSAS,
DO HEREBY CERTIFY THAT UNDER MY SUPERVISION A SURVEY WAS MADE OF
THE WEST LINE OF THE NW1/4 OF SECTION 9, T17S - R5W OF THE 6TH
P.M. AND THE ABOVE PLAT IS A TRUE EXHIBIT OF SAID SURVEY AS FAR
AS IT IS KNOWN TO ME.

SURVEY CALLED FOR BY ELNA F. HAUBOLD.

SIGNED ON THIS 10 DAY OF MAY, 1971.

F. R. Rankin

F. R. RANKIN
COUNTY ENGINEER
MCPHERSON Co., KANSAS



MICROFILM