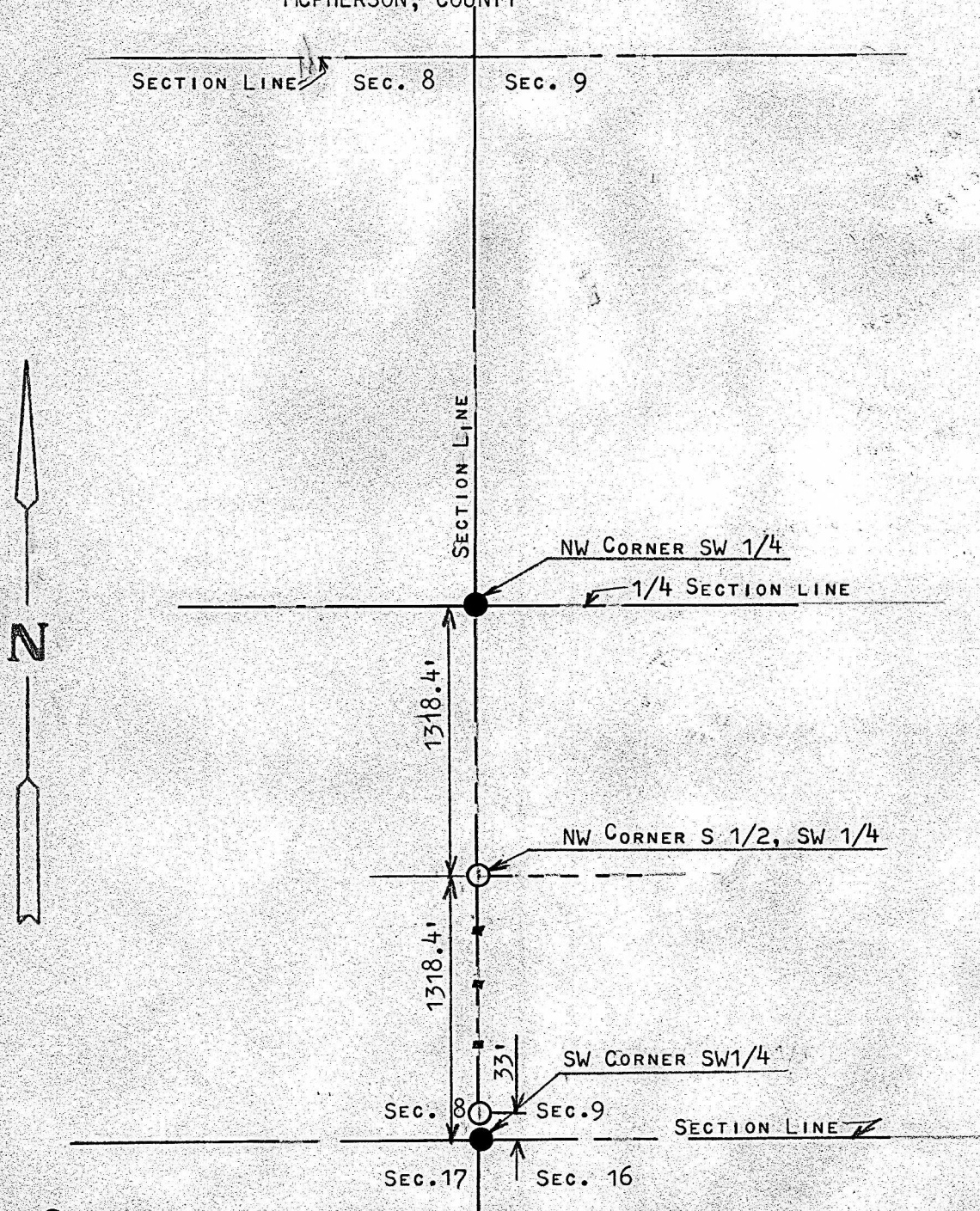


A SURVEY IN THE SW 1/4, SECTION 9, T17S R5W  
MCPHERSON, COUNTY



- PINS FOUND THIS SURVEY SET BY U.S.. GOVERNMENT  
○ PINS SET THIS SURVEY

STATE OF KANSAS )  
COUNTY OF MCPHERSON ) SS

I, FRANCIS RANKIN, PROFESSIONAL ENGINEER OF THE STATE OF KANSAS  
DO HEREBY CERTIFY THAT UNDER MY SUPERVISION A SURVEY WAS MADE TO  
DETERMINE THE WEST LINE OF THE S1/2, SW1/4 AND SET THE NW CORNER  
OF THE S1/2, SW1/4, SECTION 9 T17S, R5W OF THE 6TH P.M., AND THAT  
THE ACCOMPANYING PLAT IS A TRUE EXHIBIT OF SAID SURVEY AS FAR  
AS IT IS KNOWN TO ME.

SIGNED THIS 4 DAY OF MARCH, 1968

SURVEY CALLED FOR BY TERENCE CARLSON

FRANCIS RANKIN  
PROFESSIONAL ENGINEER  
MCPHERSON, KANSAS



MICROFILM