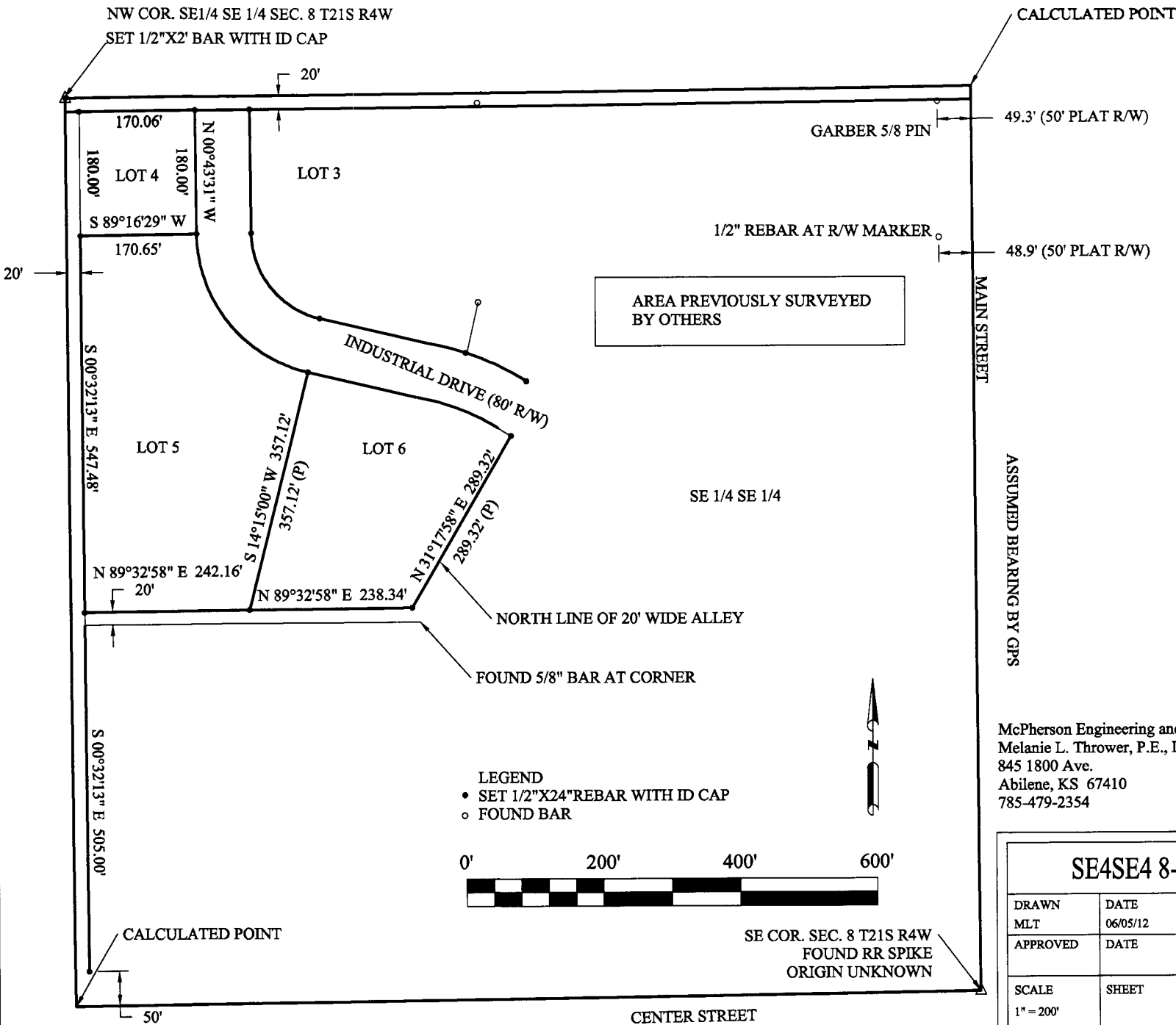
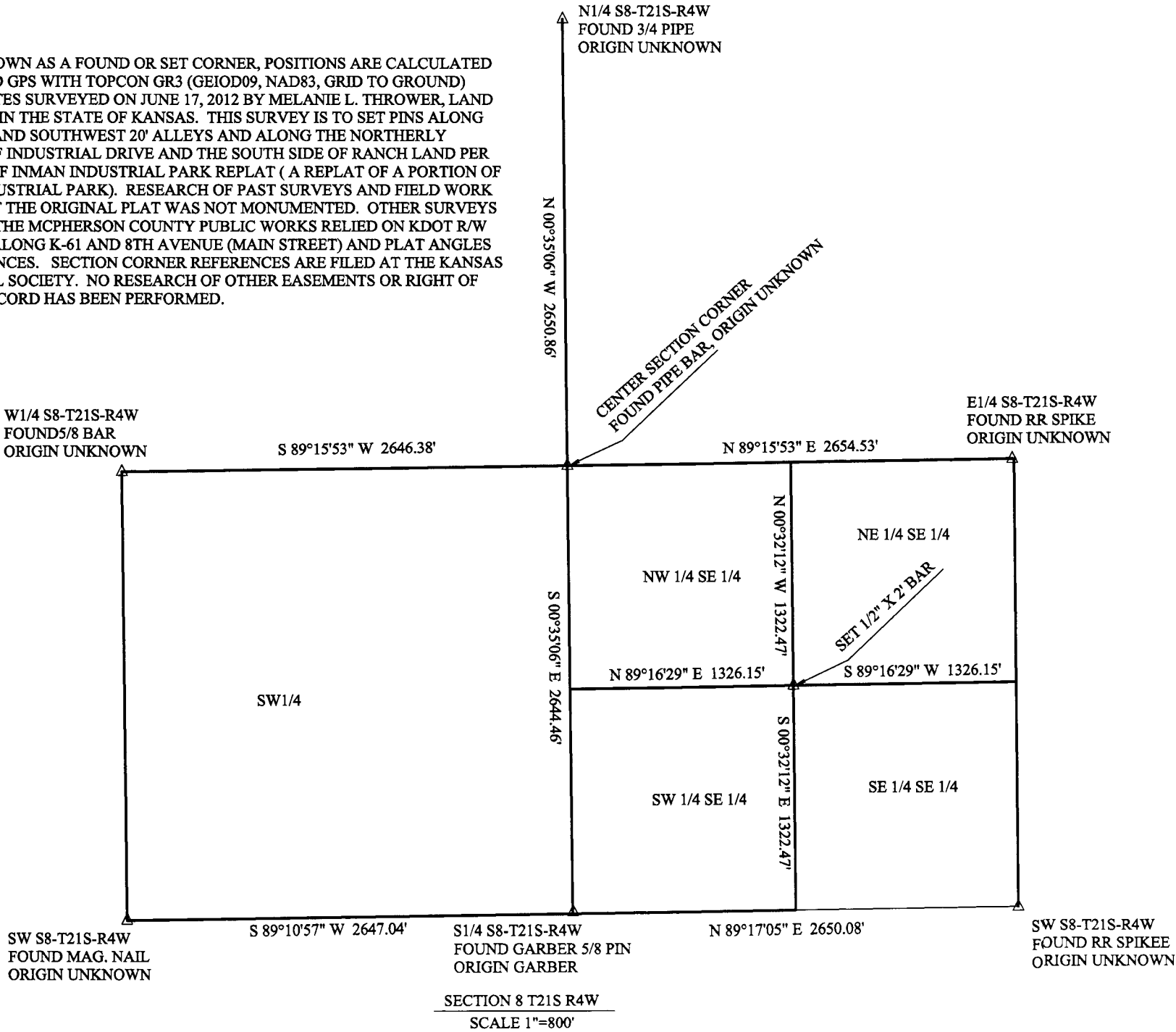


UNLESS SHOWN AS A FOUND OR SET CORNER, POSITIONS ARE CALCULATED FROM FIELD GPS WITH TOPCON GR3 (GEIOD09, NAD83, GRID TO GROUND) COORDINATES SURVEYED ON JUNE 17, 2012 BY MELANIE L. THROWER, LAND SURVEYOR IN THE STATE OF KANSAS. THIS SURVEY IS TO SET PINS ALONG THE WEST AND SOUTHWEST 20' ALLEYS AND ALONG THE NORTHERLY PORTION OF INDUSTRIAL DRIVE AND THE SOUTH SIDE OF RANCH LAND PER THE PLAT OF INMAN INDUSTRIAL PARK REPLAT (A REPLAT OF A PORTION OF INMAN INDUSTRIAL PARK). RESEARCH OF PAST SURVEYS AND FIELD WORK FINDS THAT THE ORIGINAL PLAT WAS NOT MONUMENTED. OTHER SURVEYS FOUND AT THE MCPHERSON COUNTY PUBLIC WORKS RELIED ON KDOT R/W MARKERS ALONG K-61 AND 8TH AVENUE (MAIN STREET) AND PLAT ANGLES AND DISTANCES. SECTION CORNER REFERENCES ARE FILED AT THE KANSAS HISTORICAL SOCIETY. NO RESEARCH OF OTHER EASEMENTS OR RIGHT OF WAY OF RECORD HAS BEEN PERFORMED.



SE4SE4 8-T21S-R4W		
DRAWN	DATE	INMAN INDUSTRIAL PARK CITY OF INMAN INMAN, KS 67546
MLT	06/05/12	
APPROVED	DATE	
SCALE	SHEET	PROJECT NO.
1" = 200'		