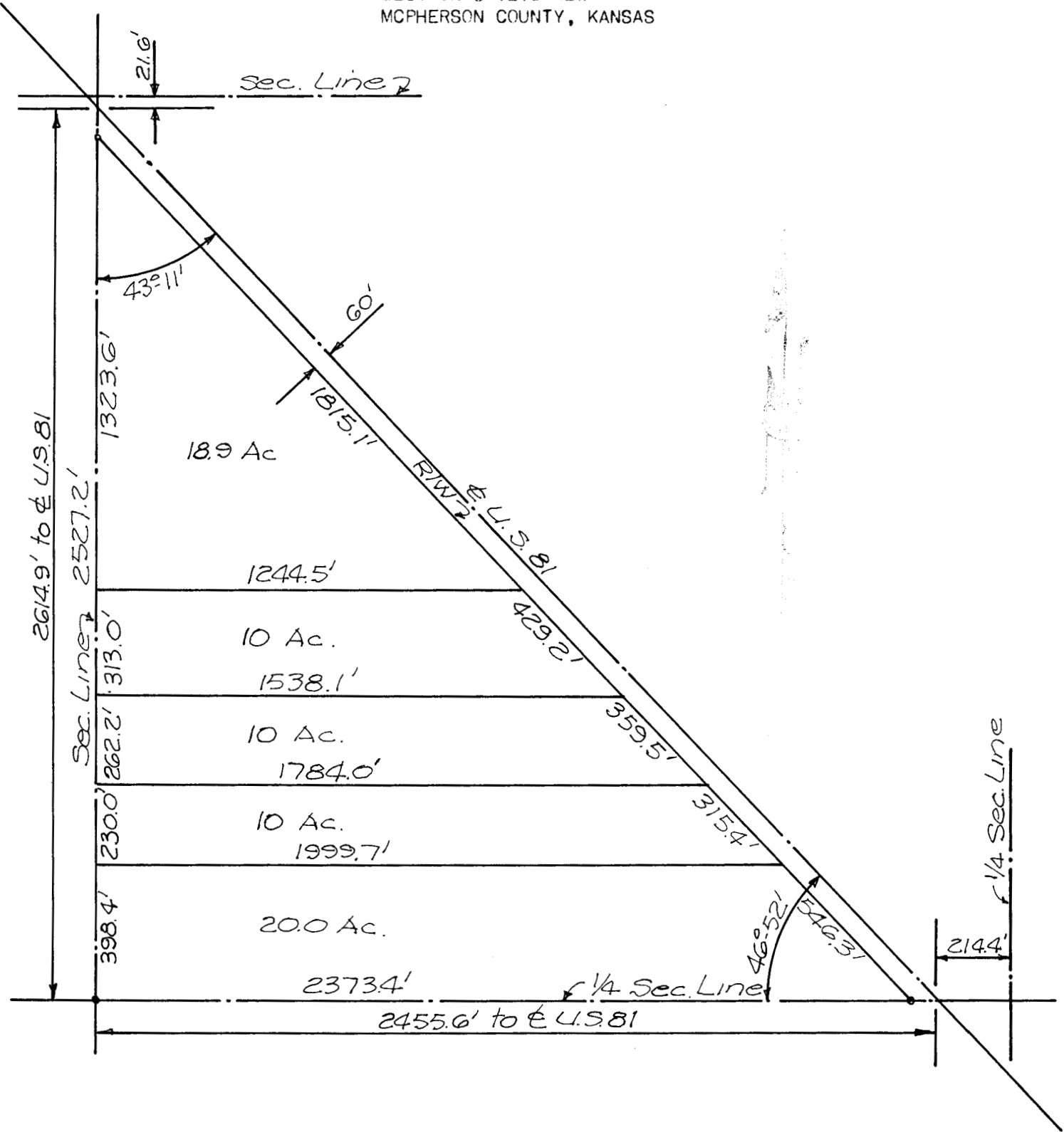


PLAT OF A PART OF NW $\frac{1}{4}$
SECTION 8-T21S-R2W
MCIPHERSON COUNTY, KANSAS



McPHERSON COUNTY) SS
STATE OF KANSAS)

I FRANCIS D. WAGNER DO HEREBY CERTIFY THAT THE ABOVE PLAT IS A TRUE
AND EXACT COPY OF THE SUBDIVISION OF A PART OF THE NW $\frac{1}{4}$ SECTION 8, T21S, R2W
LYING SOUTH AND WEST OF US 81 HIGHWAY.

Francis D. Wagner

FRANCIS D. WAGNER
COUNTY ENGINEER
McPHERSON COUNTY

JUNE 30, 1958



MICROFILM