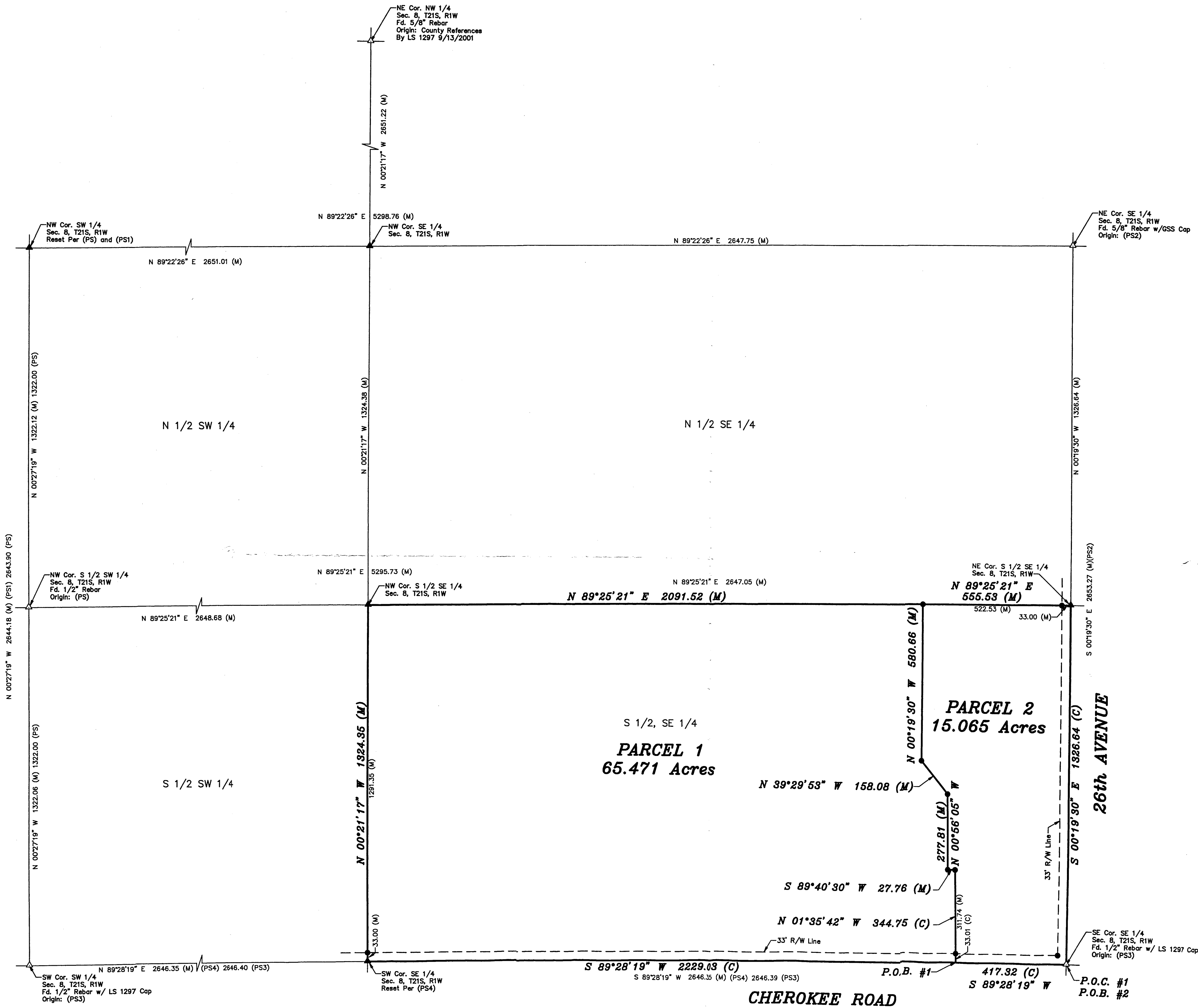


25th AVENUE



-200 0 200 400 600
BASIS OF BEARING = NAD 83 KANSAS SOUTH ZONE

LEGEND

- △ - Sectional Monument Found
- ▲ - Section Monument Set (5/8" x 24" Iron Rebar w/G.S.S. Cap)
- - 5/8" x 24" Iron Rebar Set w/G.S.S. Cap
- (C) - Calculated
- (M) - Measured
- (PS) - Previous Survey by Rankin 5-7-1968
- (PS1) - Previous Survey by LS 1297 7-10-2000
- (PS2) - Previous Survey GSS Project #62002-533
- (PS3) - Previous Survey by LS 1297 3-16-2007
- (PS4) - Previous Survey GSS Project #62008-217
- P.O.B. - Point of Beginning
- P.O.C. - Point of Commencement

DESCRIPTION:

PARCEL 1:

A portion of the South Half of the Southeast Quarter of Section 8, Township 21 South, Range 1 West of the 6th Principal Meridian, McPherson County, Kansas described as follows:

Commencing at the Southeast corner of said Southeast Quarter; thence on a NAD 83 Kansas South Zone bearing of South 89°28'19" West on the South line of said Southeast Quarter a distance of 417.32 feet to the point of beginning; thence continuing South 89°28'19" West on said South line a distance of 2229.03 feet to the Southwest corner of said Southeast Quarter; thence North 00°21'17" West on the West line of said Southeast Quarter a distance of 1324.35 feet to the Northwest corner of the South Half of the Southeast Quarter; thence North 89°25'21" East on the North line of said South Half a distance of 2091.52 feet; thence South 00°19'30" East parallel with the East line of said Southeast Quarter a distance of 580.66 feet; thence South 39°29'53" East a distance of 158.08 feet; thence South 00°56'05" East a distance of 277.81 feet; thence North 89°40'30" East a distance of 27.76 feet; thence South 01°35'42" East a distance of 344.75 feet to the point of beginning.

Containing 65.471 Acres and subject to a road right of way easement across the South 33.00 feet thereof, and any other easements or restrictions of record.

PARCEL 2:

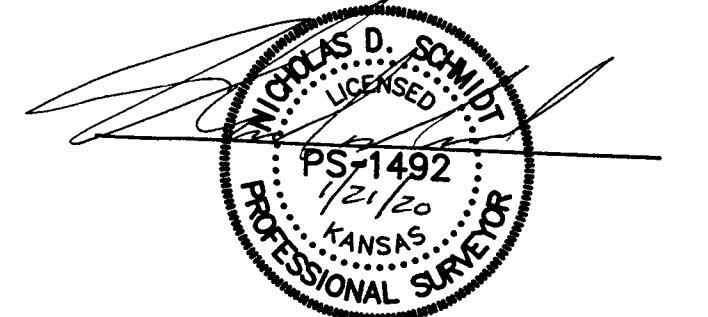
A portion of the South Half of the Southeast Quarter of Section 8, Township 21 South, Range 1 West of the 6th Principal Meridian, McPherson County, Kansas described as follows:

Beginning at the Southeast corner of said Southeast Quarter; thence on a NAD 83 Kansas South Zone bearing of South 89°28'19" West on the South line of said Southeast Quarter a distance of 417.32 feet; thence North 01°35'42" West a distance of 344.75 feet; thence South 89°40'30" West a distance of 27.76 feet; thence North 00°56'05" West a distance of 277.81 feet; thence North 39°29'53" West a distance of 158.08 feet; thence North 00°19'30" West parallel with the East line of said Southeast Quarter a distance of 580.66 feet to the North line of the South Half of said Southeast Quarter; thence North 89°25'21" East on said North line a distance of 555.53 feet to the Northeast corner of said South Half; thence South 00°19'30" East on said East line a distance of 1326.64 feet to the point of beginning.

Containing 15.065 Acres and subject to road right of way easements across the South and East 33.00 feet thereof, and any other easements or restrictions of record.

SURVEYOR'S CERTIFICATE:

I hereby certify this plat to be a true, correct and complete representation of the property described hereon, as surveyed under my supervision, this 21st day of January, 2020.



Prepared For:	LELAND BOESKER			Description:	THE S 1/2 OF THE SE 1/4 SECTION 8, T21S, R1W MCPHERSON COUNTY, KANSAS		
Prepared By:	GSS Garber Surveying Service, P.A.						
Drawn By:	WJA	Scale:	1"=300'	Date of Field Work:	January 9, 2020	Job No:	
Checked By:	NDS	Date:	01/21/2020	Sheet	1 of 1 Sheet(s)	G2020-6	

HUTCHINSON (Main Office) 2908 North Plum St. 67502 Ph. 620-665-7032 Fax 620-663-7401
MCPHERSON (Branch Office) 115 East Martin 67460 Ph. 620-241-4441 Fax 620-241-4458
NEWTON (Branch Office) 511 North Poplar St. 67114 Ph. 316-283-5053 Fax 316-283-5073
MANHATTAN (Branch Office) 3226 Kimball Ave Ste. #2 66503 Ph. 785-320-4810