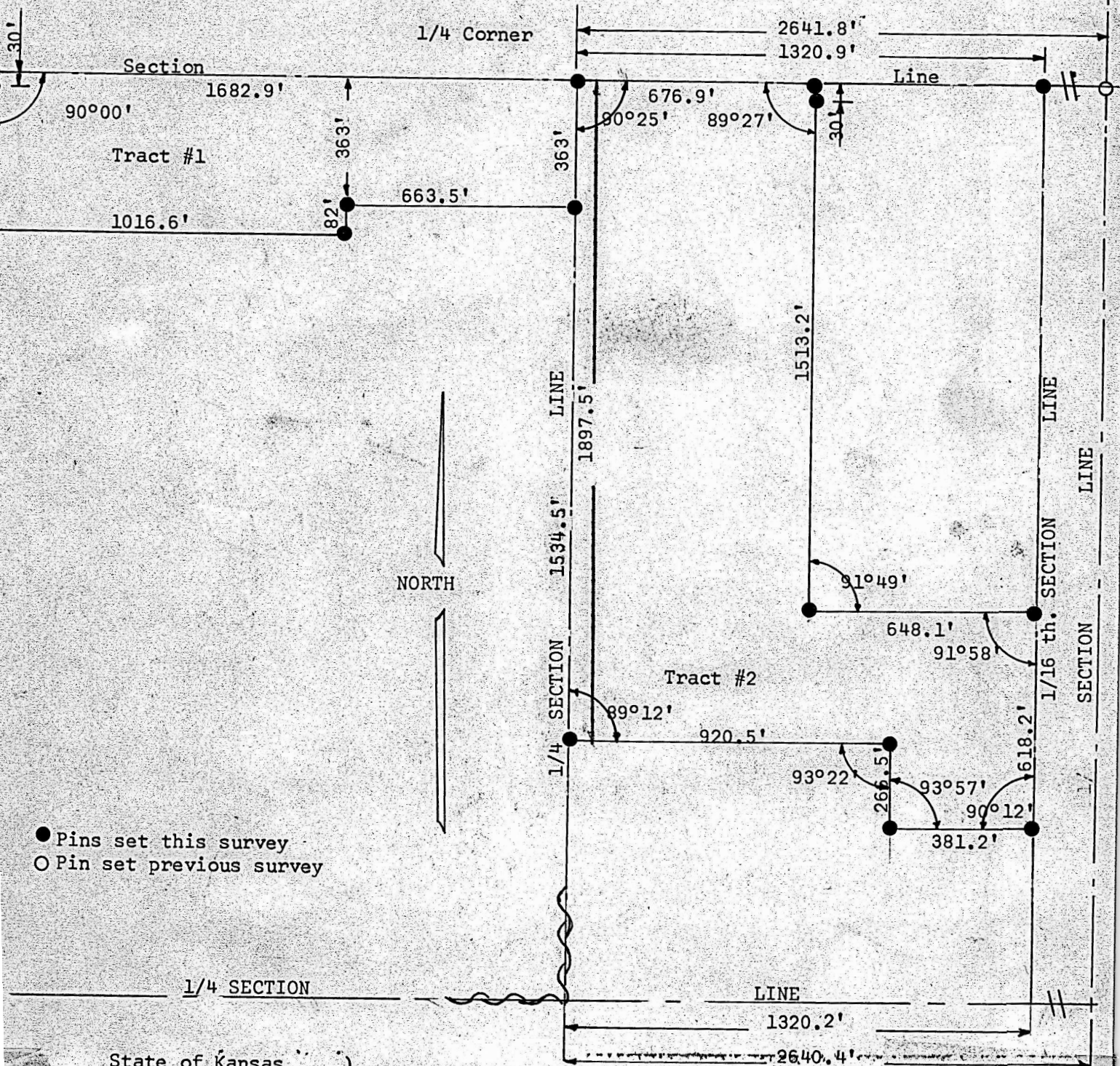


Tract of land in the
N1/2 Section 8, T20S, R4W



State of Kansas)
County of McPherson) S.S.

I, FRANCIS RANKIN, PROFESSIONAL ENGINEER OF THE STATE OF KANSAS, DOHERBY CERTIFY THAT UNDER MY SUPERVISION A SURVEY WAS MADE IN THE NORTH 1/2 OF SECTION 8, T20S, R4W OF THE 6TH. P.M. AND DESCRIBED AS FOLLOWS

TRACT #1 BEGINNING AT THE NE CORNER OF THE NW1/4 SECTION 8 T20S, R4W, THENCE WEST ON THE NORTH LINE OF SAID SECTION 1682.9 FEET; THENCE 90°0' SOUTH 445.0 FEET; THENCE EAST 1016.6 FEET; THENCE NORTH 82.0 FEET; THENCE EAST 663.5 FEET TO THE 1/4 SECTION LINE; THENCE NORTH ON SAID LINE 363.0 FEET, TO THE PLACE OF BEGINNING, THE LAND HERIN DESCRIBED CONTAINS 15.9 ACRES MORE OR LESS.

TRACT #2 BEGINNING AT THE NORTHWEST CORNER OF THE NE1/4 OF SAID SECTION 8; THENCE SOUTH ON QUARTER SECTION LINE 1897.5 FEET; THENCE AT AN INTERIOR ANGLE OF 89°12' EAST 920.5 FEET; THENCE AT AN EXTERIOR ANGLE OF 93°22' SOUTH 266.5 FEET; THENCE AT AN INTERIOR ANGLE OF 93°57' EAST 381.2 FEET TO THE 1/16 LINE; THENCE NORTH ON SAID 1/16TH SECTION LINE 618.2 FEET; THENCE AT AN INTERIOR ANGLE OF 91°58' WEST 648.1 FEET; THENCE AT AN EXTERIOR ANGLE OF 91°49' NORTH 1513.2 FEET TO THE SECTION LINE, THENCE WEST 676.9 FEET TO POINT OF BEGINNING, THE LAND HERIN DESCRIBED CONTAINS 37.1 ACRES MORE OR LESS AND

THAT THE ABOVE PLAT IS A TRUE EXHIBIT OF SAID SURVEY AS FAR AS IT IS KNOWN TO ME.

SIGNED THIS 25 DAY OF OCTOBER, 1966

FRANCIS RANKIN
PROFESSIONAL ENGINEER
MCPHERSON, KANSAS