

Main Office  
2908 North Plum Street  
Hutchinson, KS 67502  
Office: (620) 665-7032  
Fax: (620) 663-7401



## Garber Surveying Service, P.A.

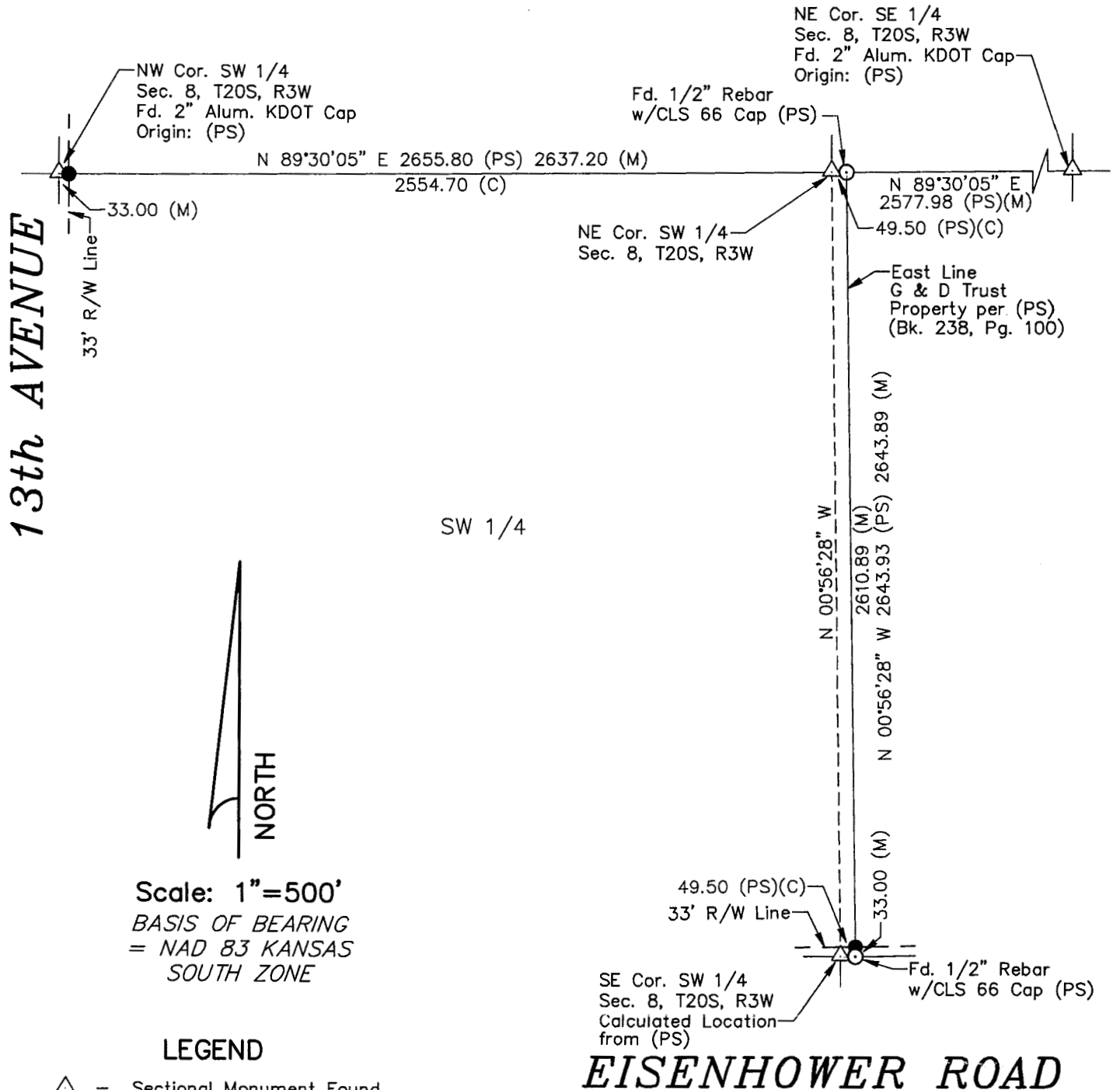
Branch Offices  
511 North Poplar Street  
Newton, KS 67114  
Office: (316) 283 - 5053  
Fax: (316) 283 - 5073

115 East Marlin, Suite 102  
McPherson, KS. 67460  
Office: (620) 241-4441  
Fax: (620) 241-4458

**SURVEY FOR:** GALEN CASE

**Project No.** G2018-527

**DESCRIPTION:** A survey of the East and North Property Lines for G & D Trust as recorded in Book 238, Page 100 at the McPherson County Register of Deeds office.



**EISENHOWER ROAD**

**DATE OF FIELD WORK:** July 16, 2018

**SURVEYOR'S CERTIFICATE:**

I hereby certify this plat to be a true, correct and complete representation of the property described above as surveyed under my supervision.  
Dated: August 23, 2018

Copyright © 2018 Garber Surveying Service, P.A.

Nicholas D. Schmidt LS #1492