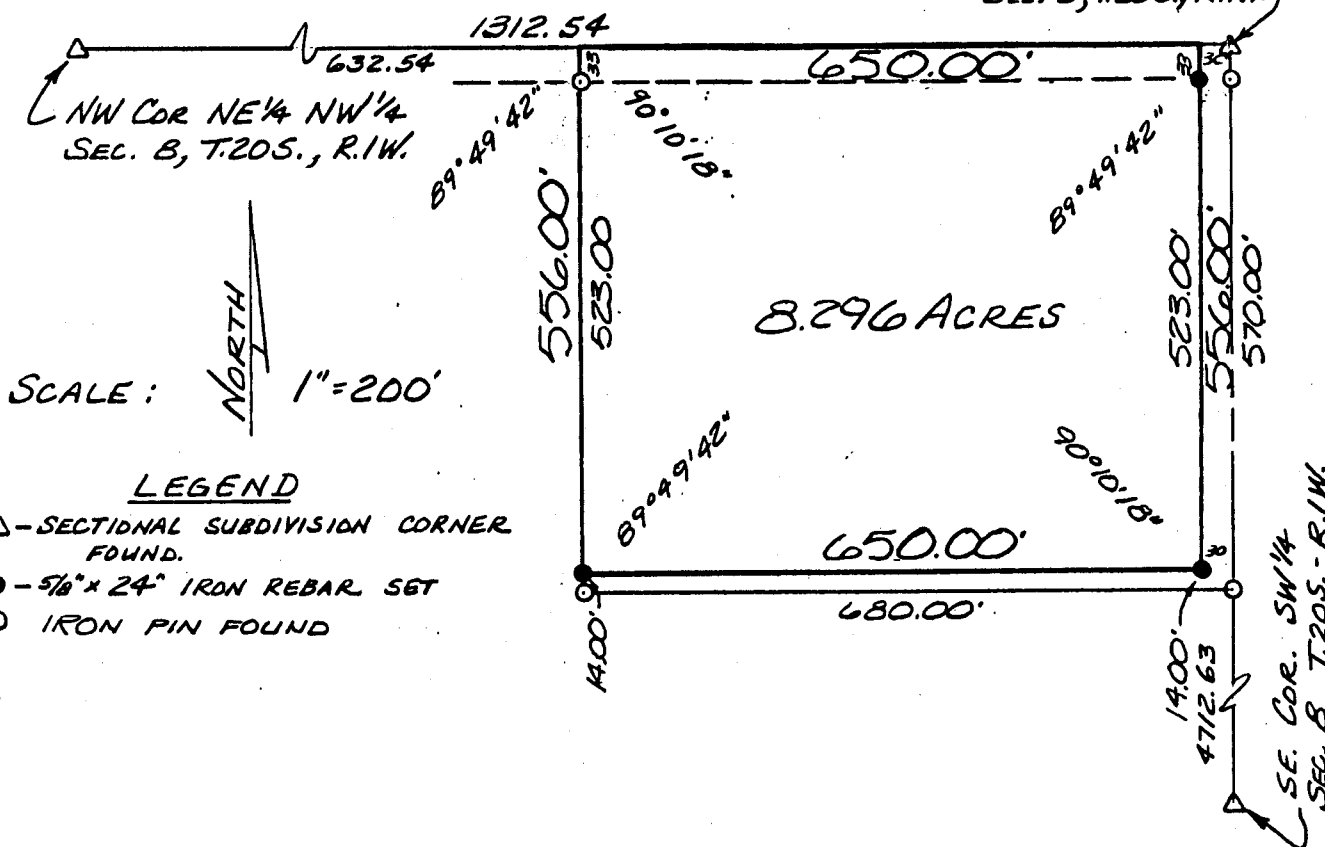




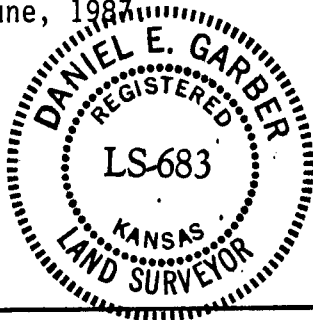
Proj. No. G87-481

DESCRIPTION: Commencing at the Northeast corner of the Northwest Quarter of Section 8, Township 20 South, Range 1 West of the 6th Principal Meridian; thence West along the North line of said Northwest Quarter 30.00 feet for a point of beginning; thence with a deflection angle 89°49'42" left-South parallel with the East line of said Northwest Quarter a distance of 556.00 feet; thence with a deflection angle 89°49'42" right-West parallel with the North line of said Northwest Quarter a distance of 650.00 feet; thence with a deflection angle 90°10'18" right-North parallel with the East line of said Northwest Quarter a distance of 556.00 feet to the North line of said Northwest Quarter; thence with a deflection angle 89°49'42" right-East along the North line of said Northwest Quarter a distance of 650.00 feet to the point of beginning containing 8.296 Acres in McPherson County, Kansas subject to a road right-of-way easements across the North 33.00 feet thereof and any other easements of record. *NE Cor. NW 1/4*

. NE COR. NW 1/4
SEC. 8, T.20S., R.1W.)



I hereby certify this plat to be a true, correct and complete representation of the property described above, as surveyed under my supervision this 25th day of June, 1987.



Daniel E. Garber
Daniel E. Garber RLS #683