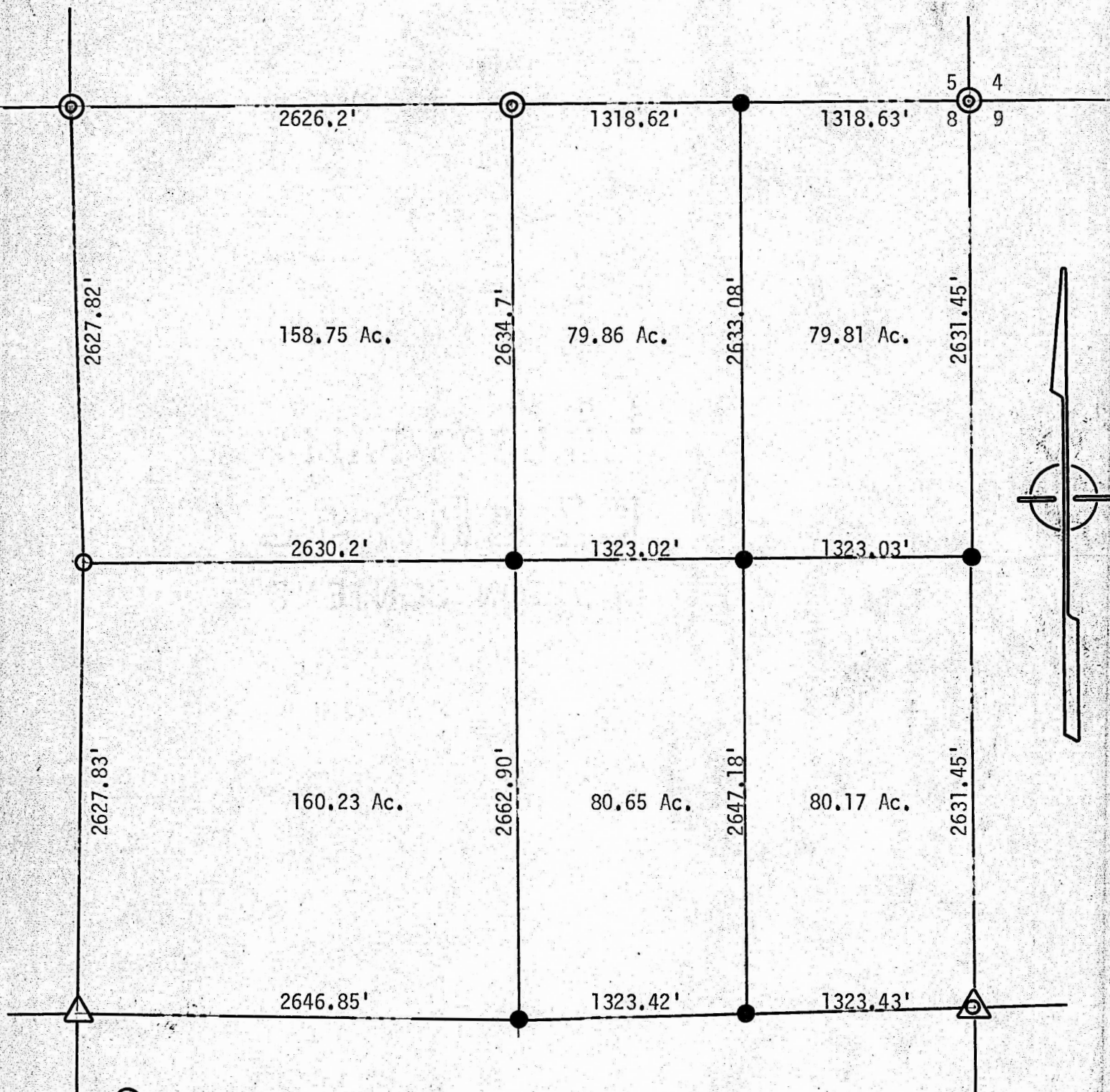


SURVEY OF SECTION 8, T18S, R4W
MC PHERSON, KANSAS



- ⊙ Pin & Stones Set U.S. Gov. Survey
- △ Pin over Stone set Previous Survey
- Pin Set Previous Survey
- △ Stone Found This Survey
- Pins Set This Survey

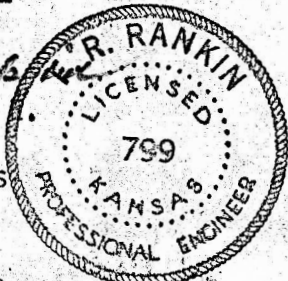
State of Kansas)
County of McPherson) SS

I, F. R. Rankin, County Engineer of McPherson, Kansas, do hereby certify that under my supervision a survey was made of Section 8, T18S, R4W of the 6th P.M. and the above plat is a true exhibit of said survey as far as it is known to me.

Survey Requested by George Sents

Signed this 26 day of February, 1973

F. R. Rankin
F. R. Rankin, P.
County Engineer
McPherson, Kansas



RECORDED