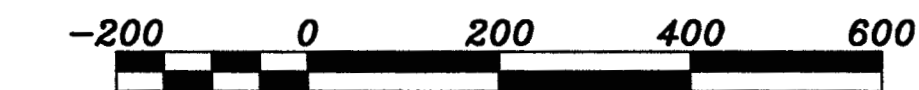
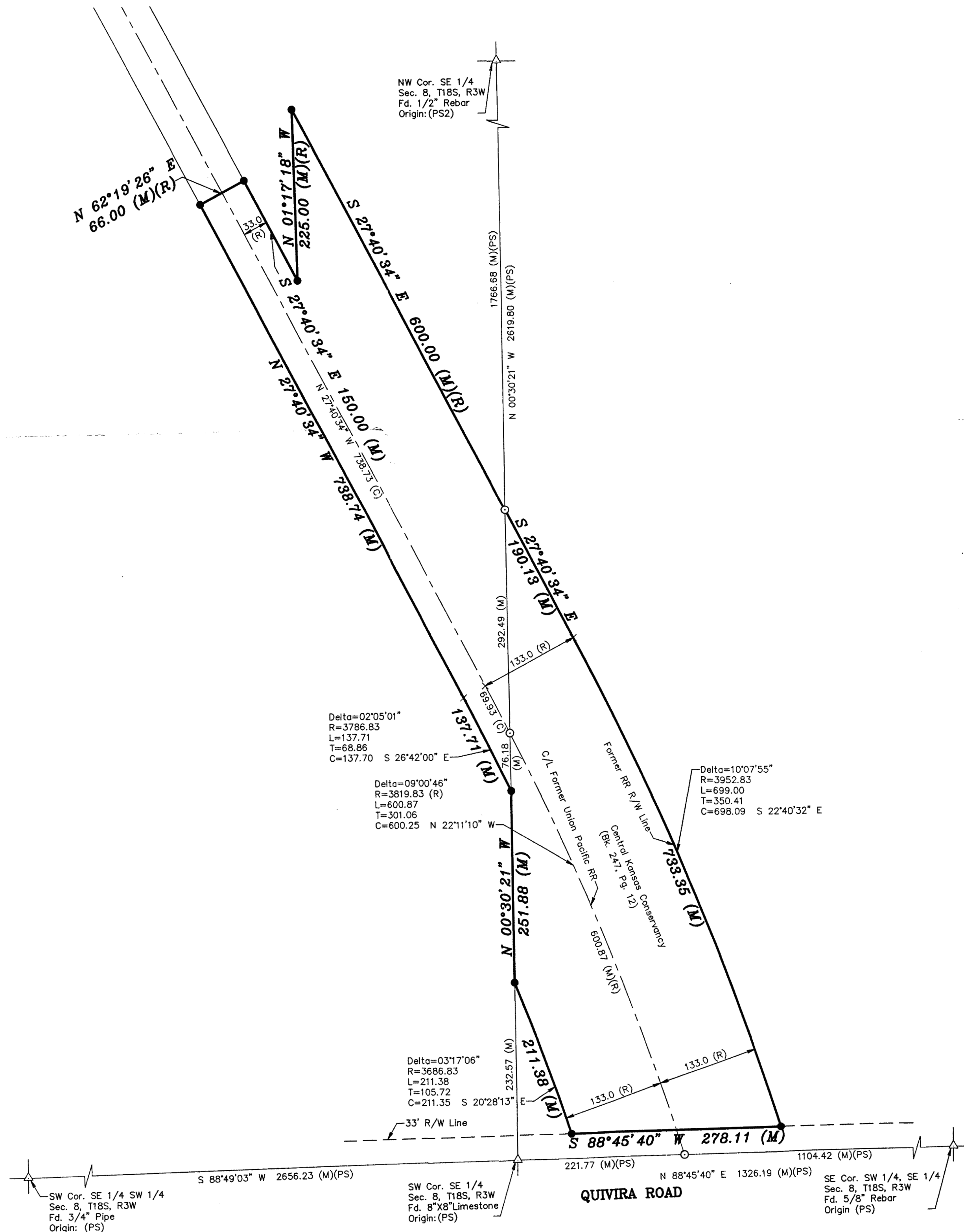


Copyright © 2020 Garber Surveying Service, P.A. Saved 5/27/2021 1:51:52 PM by KZOOK  
Plot Date & Time Thursday, May 27, 2021 1:52:29 PM Dwg Path E:\LUD\GSSFILES\2021\20210422M\dwg\20210422\_PSCS 20200567\_RR RW Calcs



BASIS OF BEARING = NAD 83 KANSAS SOUTH ZONE

#### LEGEND

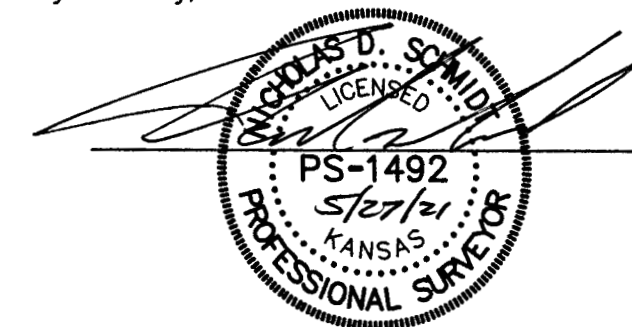
- △ - Sectional Monument Found
- - Fd. 5/8" Rebar w/GSS CLS 52 Cap unless otherwise noted
- - 5/8" x 24" Iron Rebar Set w/GSS CLS 52 Cap
- × - Calculated Location
- (C) - Calculated
- (M) - Measured
- (R) - Record measurement - Union Pacific Railroad Plans
- (PS) - Previous Survey GSS #G2020-567

#### DESCRIPTION:

A survey of a portion of the former Union Pacific Railroad Right of Way (now Central Kansas Conservancy) located in portion of the Southeast Quarter and a portion of the Southwest Quarter of Section 8, Township 18 South, Range 3 West of the 6th Principal Meridian, McPherson County, Kansas.

#### SURVEYOR'S CERTIFICATE:

I hereby certify this plat to be a true, correct and complete representation of the property described hereon, as surveyed under my supervision, this 27th day of May, 2021



#### FORMER RAILROAD RIGHT OF WAY EXHIBIT

Prepared For: <b>CENTRAL KANSAS CONSERVANCY</b>		Description: <b>A PORTION OF THE SE 1/4 SECTION 8, T18S, R3W McPHERSON COUNTY, KANSAS</b>	
Prepared By: <b>GSS</b>		Garber Surveying Service, P.A.	
HUTCHINSON (Main Office) 2908 North Plum St. 67502 Ph. 620-665-7032 Fax 620-663-7401		McPHERSON (Branch Office) 115 East Martin 67460 Ph. 620-241-4441 Fax 620-241-4458	
NEWTON (Branch Office) 511 North Poplar St. 67114 Ph. 316-283-5053 Fax 316-283-5073			
Drawn By: KDZ	Scale: 1"=200'	Date of Field Work: May 4, 2021	Job No:
Checked By: NDS	Date: 05/27/2021	Sheet 1 of 1 Sheet(s)	G2021-422