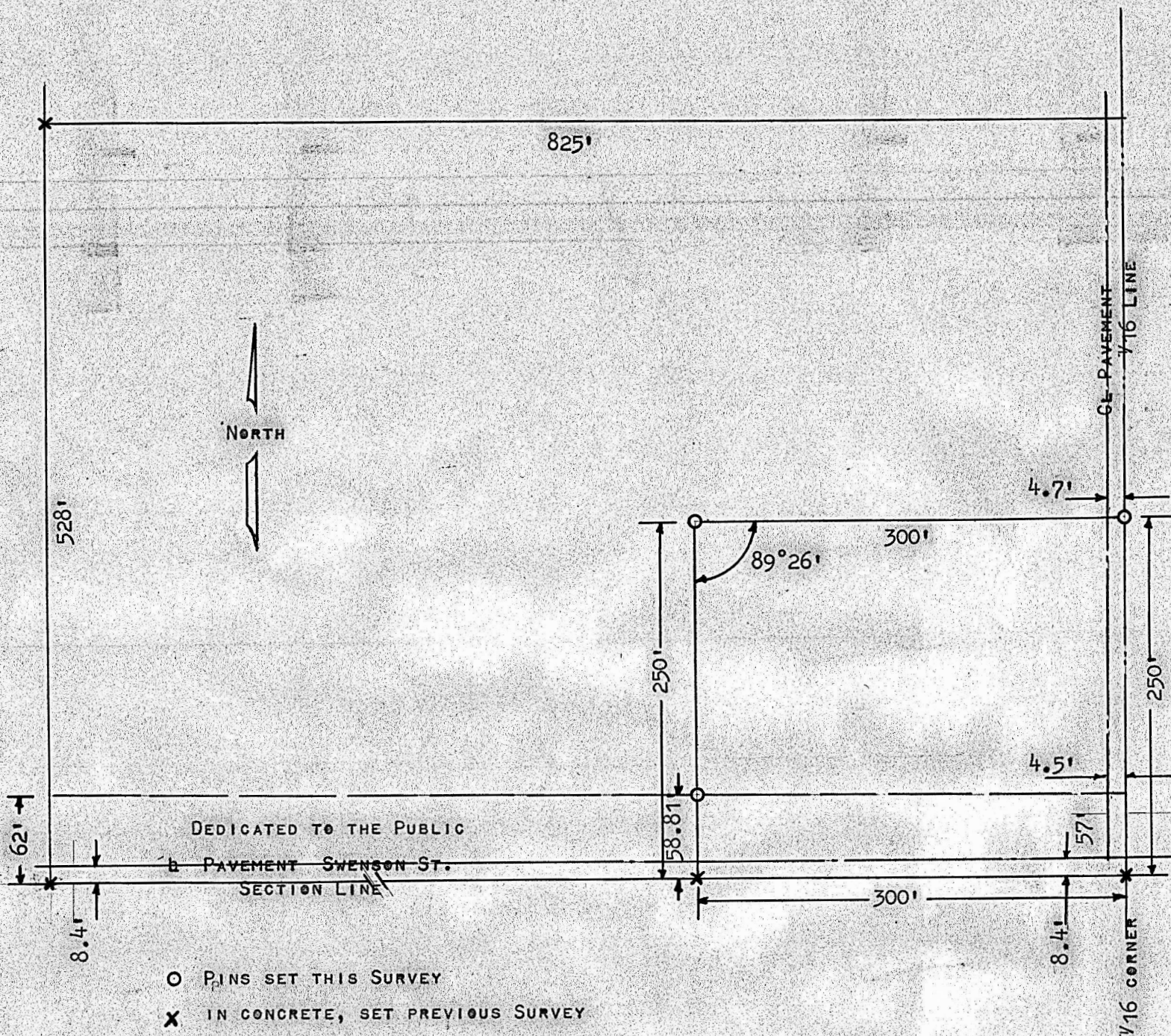


PART OF THE W<sup>1</sup>/<sub>2</sub> SE<sup>1</sup>/<sub>4</sub>  
SECTION 8 T17S, R3W  
BETHANY COLLEGE

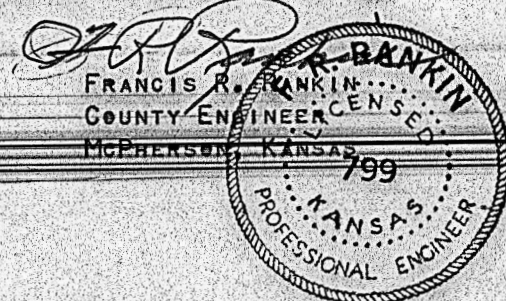


- O PINS SET THIS SURVEY  
X IN CONCRETE, SET PREVIOUS SURVEY

STATE OF KANSAS )  
COUNTY OF MCPHERSON) SS

I, FRANCIS R. RANKIN, COUNTY ENGINEER OF MCPHERSON, COUNTY, DO HEREBY CERTIFY THAT UNDER MY SUPERVISION A SURVEY WAS MADE IN THE WEST HALF (W<sup>1</sup>/<sub>2</sub>) OF THE SOUTHEAST QUARTER (SE<sup>1</sup>/<sub>4</sub>) SECTION 8, T17S, R3W OF THE 6TH P.M. AND DESCRIBED AS FOLLOWS:  
BEGINNING AT THE SOUTHEAST CORNER OF THE W<sup>1</sup>/<sub>2</sub> SE<sup>1</sup>/<sub>4</sub> SECTION 8, T17S, R3W, THENCE WEST ON SECTION LINE 300' FEET, THENCE NORTH 250 FEET, THENCE EAST 300 FEET, THENCE SOUTH 250 FEET TO THE PLACE OF BEGINNING, AND THE ABOVE PLAT IS A TRUE EXHIBIT OF SAID SURVEY AS FAR AS IT IS KNOWN TO ME.

SIGNED THIS 4 DAY OF OCTOBER, 1963



MICROFILM

MICROFILM