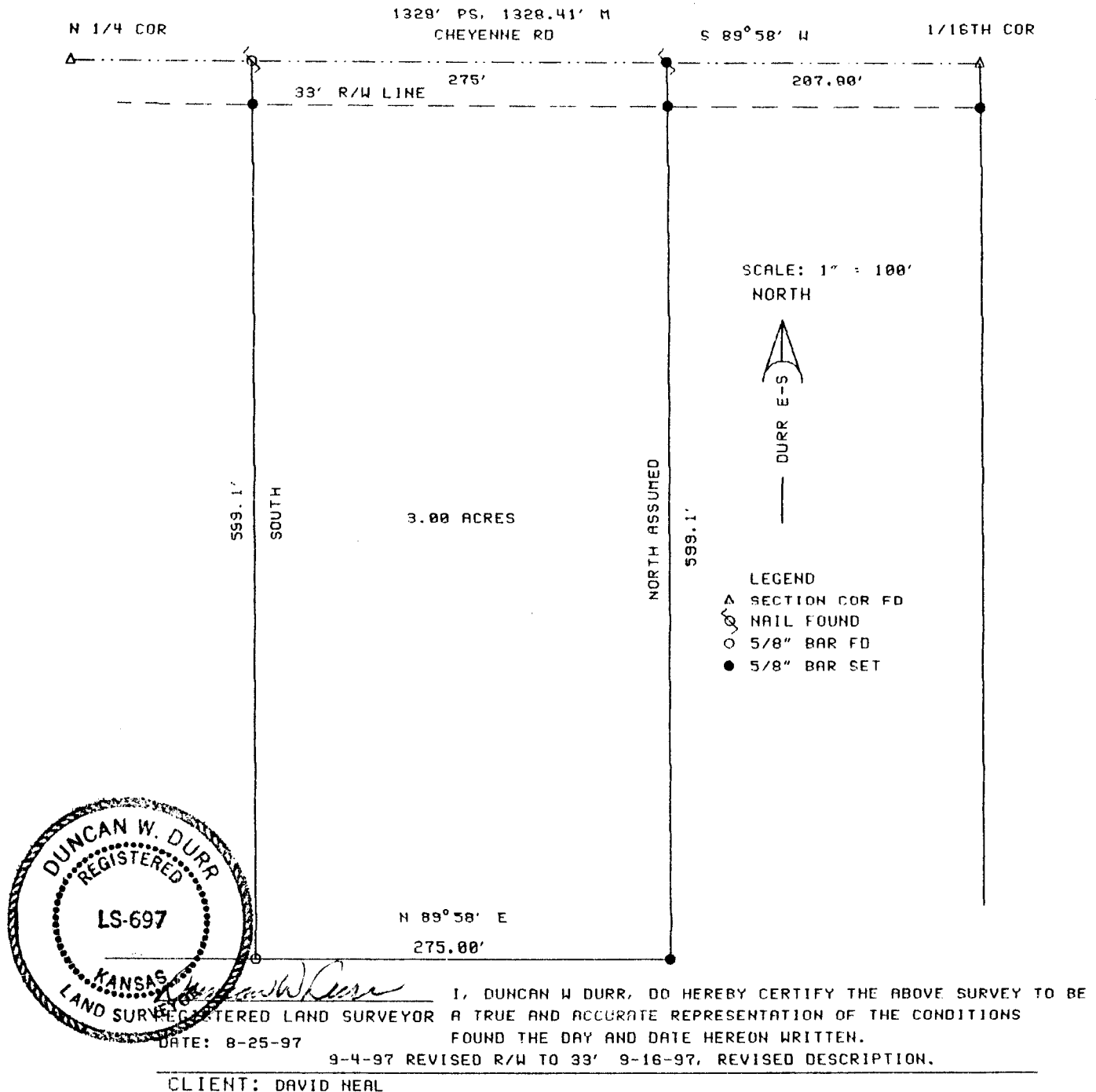


DURR ENGINEERING,
ENGINEERING, SURVEYING, PLANNING, & DEVELOPMENT

525 HOWARD
HUTCHINSON, KS. 67501
PHONE: 316-663-9613



DESCRIPTION: BEGINNING 207.90 FEET, S 89°56' W OF THE NORTHEAST CORNER OF THE WEST HALF OF THE NORTHEAST QUARTER OF SECTION 7, TOWNSHIP 21 SOUTH, RANGE 4 WEST OF THE 6TH PM, McPHERSON COUNTY, KANSAS;
THENCE CONTINUING S 89°58' W, A DISTANCE OF 275.00 FEET;
THENCE SOUTH, A DISTANCE OF 599.10 FEET;
THENCE N 89°58' E, A DISTANCE OF 275.00 FEET;
THENCE NORTH, A DISTANCE OF 599.10 FEET TO THE POINT OF BEGINNING;
TRACT CONTAINS 3.00 ACRES; EXCEPT THE NORTH 33 FEET FOR CHEYENNE ROAD RIGHT OF WAY, AND ANY OTHER EASEMENTS OF RECORD.

STATE: KANSAS COUNTY: McPHERSON PROJECT: 37105