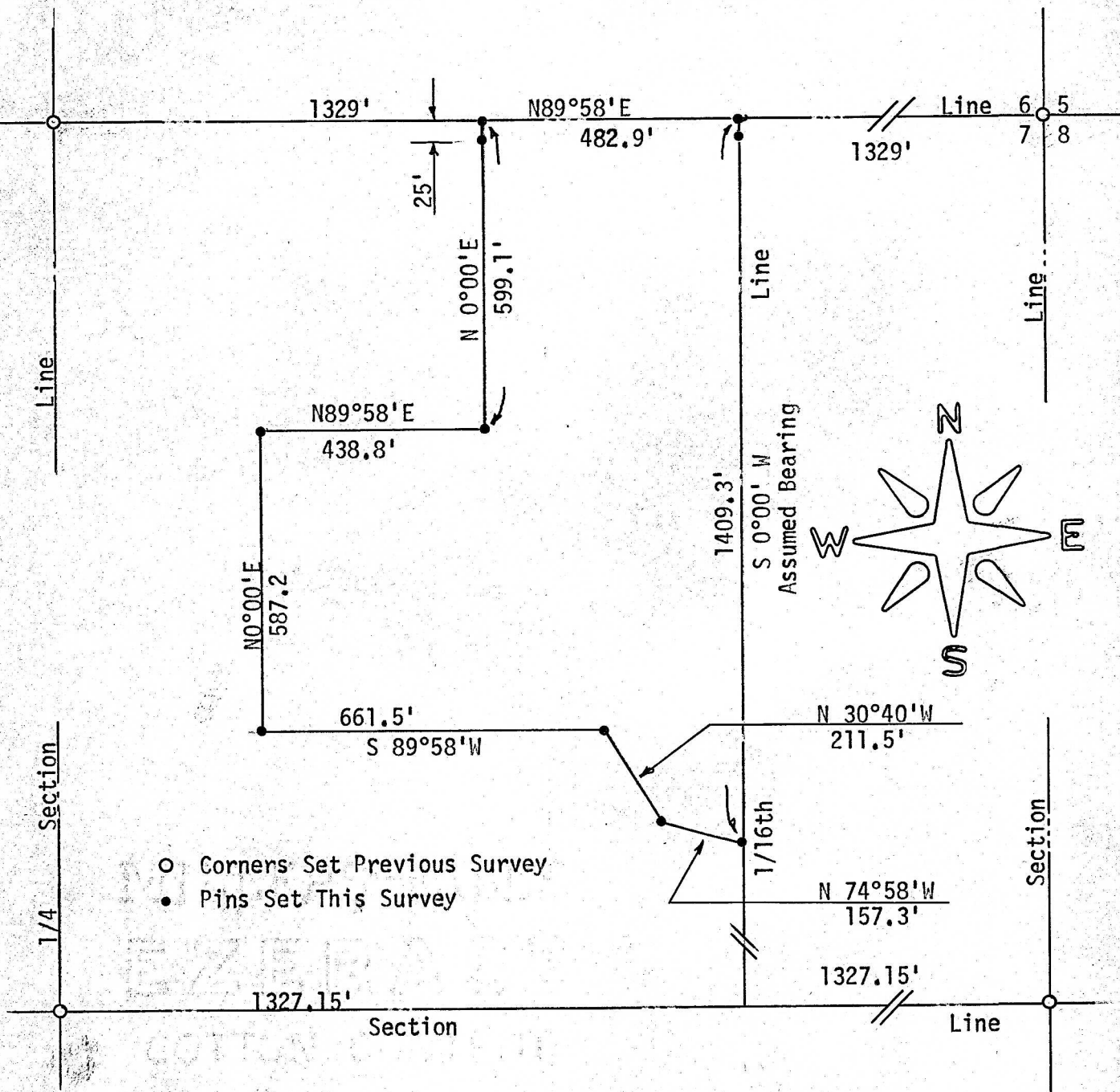


SURVEY OF A TRACT OF LAND IN THE
W 1/2 NE 1/4 SECTION 7, T21S, R4W
MC PHERSON, KANSAS



State of Kansas)
County of McPherson) SS

I, F. R. Rankin, County Engineer of McPherson County, Kansas, do hereby certify that under my supervision a survey was made in the W 1/2 NE 1/4 Section 7, T21S, R4W of the 6th P.M. and described as follows: Beginning at the NE corner of said W 1/2 NE 1/4; thence South on the East line of said W 1/2, being an assumed bearing of 0°00' W, A distance of 1409.3 feet; thence N 74°58'W, a distance of 157.3 feet; thence N 30°40'W, a distance of 211.5 feet; thence S 89°58'W, a distance of 661.5 feet; thence N 0°00' E, a distance of 587.2 feet; thence N 89°58'E, a distance of 438.8 feet; thence N 0°00' E, a distance of 599.1 feet to the North line of said W 1/2, NE 1/4; thence N 89°58'E, a distance of 482.9 feet to the place of beginning. The land herein described contains 20 acres more or less and the above plat is a true exhibit of said survey as far as it is known to me.

Survey requested by Ben Schierling

Signed this 8 day of November, 1973

F. R. Rankin

F. R. Rankin, P. E.
Administrator of P. W. & County Engr.
McPherson County, Kansas



ENCLOSURE