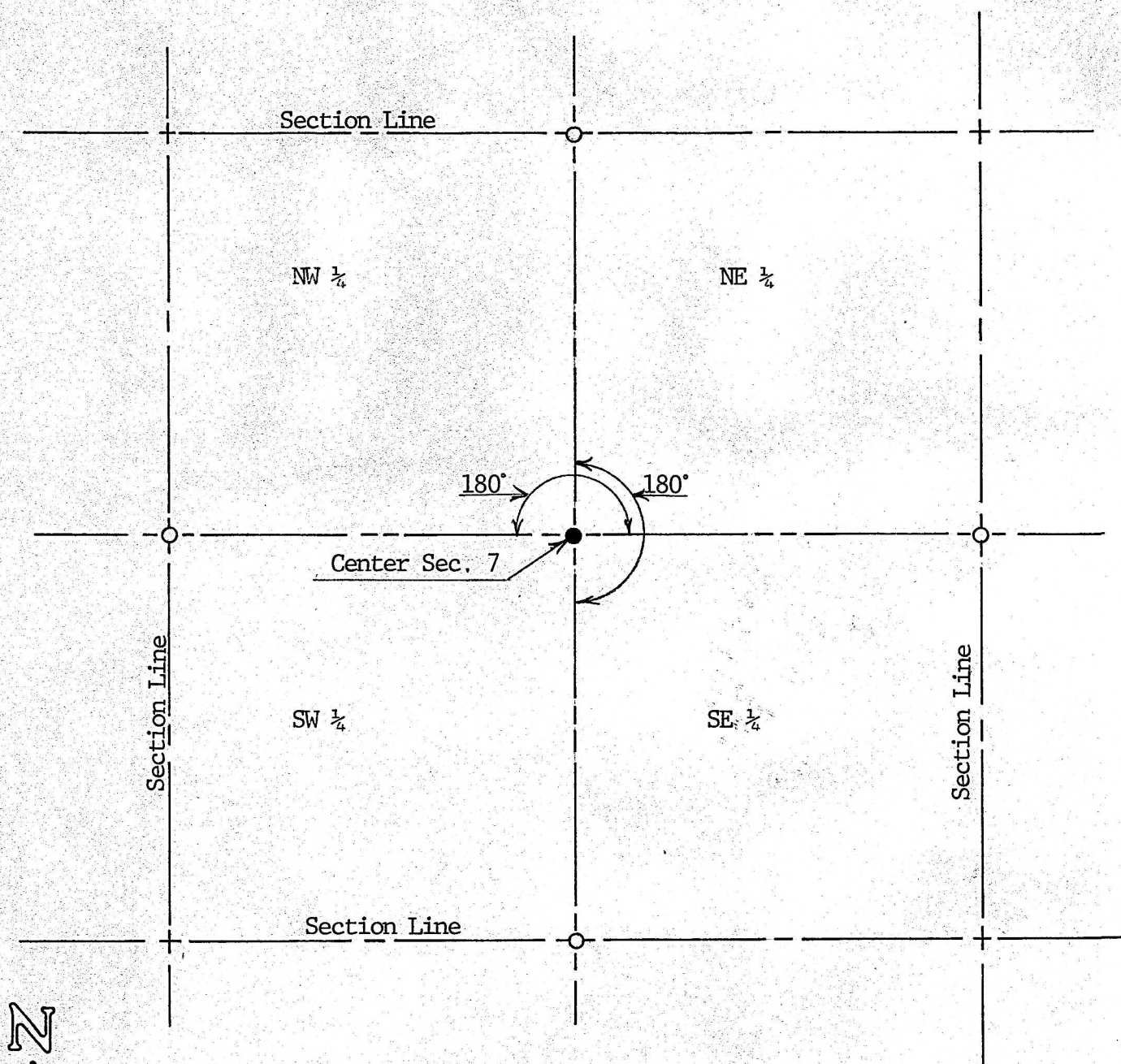


A SURVEY IN SECTION 7, T21S, R4W
MC PHERSON COUNTY, KANSAS



- Pins Found This Survey
- Pins Set This Survey

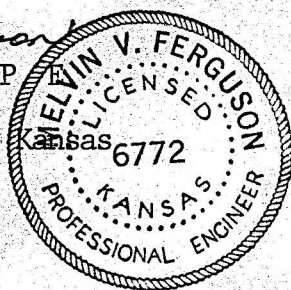
State of Kansas)
County of McPherson) SS

I, Melvin Ferguson, County Engineer of McPherson County, do hereby certify that under my supervision a survey was made to establish the center of Section 7, T21S, R4W of the 6th P.M.

Survey called for by Ben Schierling

Signed this 7th day of October, 1974

Melvin Ferguson
Melvin Ferguson, P.E.
County Engineer
McPherson County, Kansas



MICROFILM