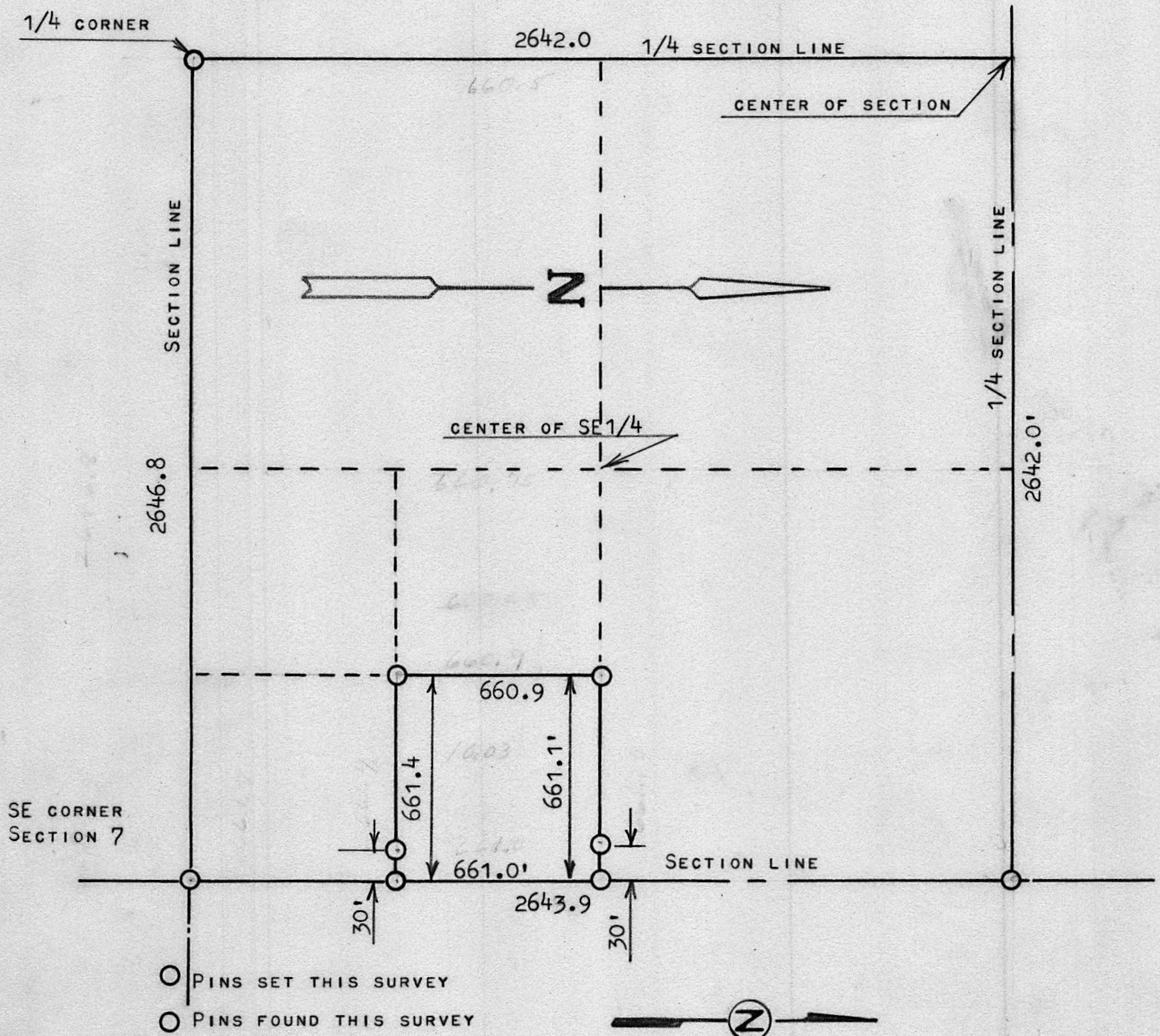


A SURVEY IN THE SE1/4, SECTION 7, T21S R1W
MCPHERSON COUNTY, KANSAS



STATE OF KANSAS)
COUNTY OF MCPHERSON) SS

I, FRANCIS RANKIN, PROFESSIONAL ENGINEER OF THE STATE OF KANSAS DO HEREBY CERTIFY THAT UNDER MY SUPERVISION A SURVEY WAS MADE OF THE NE1/4, SE1/4, SE1/4, SECTION 7, T21S, R1W OF THE 6TH P.M. SAID TRACT OF LAND CONTAINS 10.03 ACRES MORE OR LESS, AND THAT THE ABOVE PLAT IS A TRUE EXHIBIT OF SAID SURVEY AS FAR AS IT IS KNOWN TO ME.

SURVEY CALLED FOR BY ERST REIMER

SIGNED THIS 7 DAY OF MAY, 1968

Francis Rankin
FRANCIS RANKIN
PROFESSIONAL ENGINEER
MCPHERSON, KANSAS

