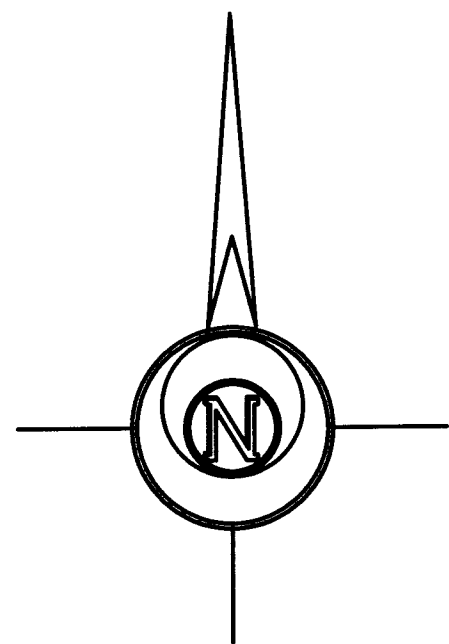
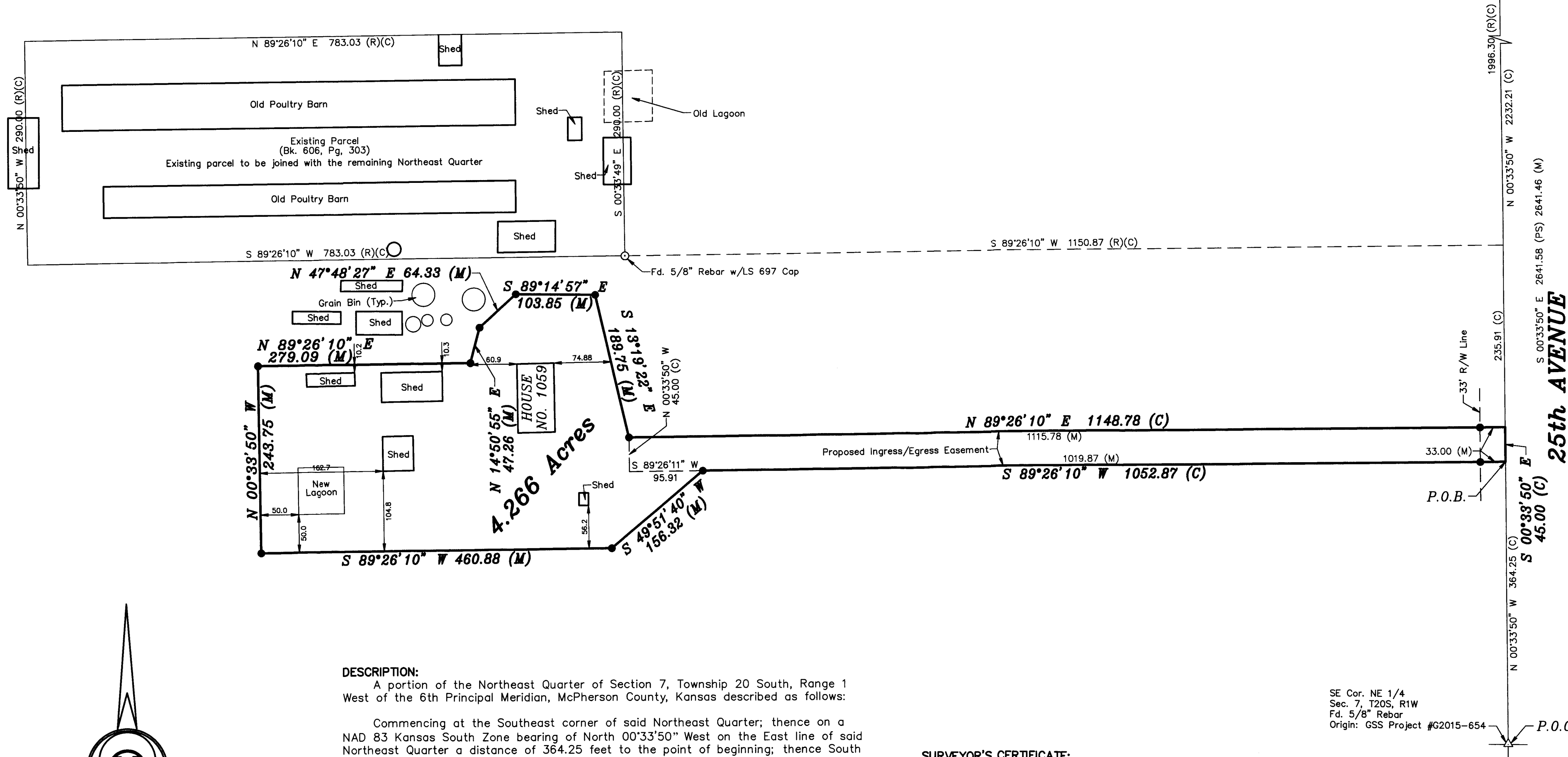


Saved: 8/2/2017 8:54:10 AM by KZDOK  
Plot Date & Time Wednesday, August 02, 2017 8:54:28 AM Dwg Path C:\DD\GSSFILES\2017\20170514\_C3a\dwg\20170514\_BS\_REDONE\_Don\_Decker

NE Cor. NE 1/4  
Sec. 7, T20S, R1W  
Fd. 1/2" Rebar  
Origin: GSS Project #G2002-756



BASIS OF BEARING = NAD 83 KANSAS SOUTH ZONE

#### LEGEND

- △ - Sectional Monument Found
- - 5/8" x 24" Iron Rebar Set w/G.S.S. Cap
- (C) - Calculated
- (M) - Measured
- (PS) - Previous Survey Duncan W. Durr LS-697, 12-18-1987
- P.O.B. - Point of Beginning
- P.O.C. - Point of Commencement

#### DESCRIPTION:

A portion of the Northeast Quarter of Section 7, Township 20 South, Range 1 West of the 6th Principal Meridian, McPherson County, Kansas described as follows:

Commencing at the Southeast corner of said Northeast Quarter; thence on a NAD 83 Kansas South Zone bearing of North 00°33'50" West on the East line of said Northeast Quarter a distance of 364.25 feet to the point of beginning; thence South 89°26'10" West perpendicular to said East line a distance of 1052.87 feet; thence South 49°51'40" West a distance of 156.32 feet; thence South 89°26'10" West perpendicular to said East line a distance of 460.88 feet; thence North 00°33'50" West parallel with said East line a distance of 243.75 feet; thence North 89°26'10" East perpendicular to said East line a distance of 279.09 feet; thence North 14°50'55" East a distance of 47.26 feet; thence North 47°48'27" East a distance of 64.33 feet; thence South 89°14'57" East a distance of 103.85 feet; thence South 13°19'22" East a distance of 189.75 feet; thence North 89°26'10" East perpendicular to said East line a distance of 1148.78 feet to said East line; thence South 00°33'50" East on said East line a distance of 45.00 feet to the point of beginning. Containing 4.266 Acres and subject to a road right of way easement across the East 33.00 feet thereof, and any other easements or restrictions of record.

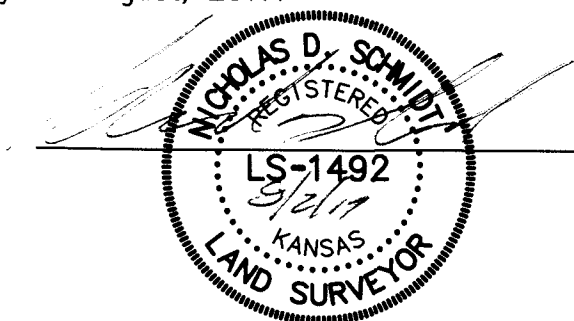
#### Proposed Ingress/Egress Easement:

A portion of the Northeast Quarter of Section 7, Township 20 South, Range 1 West of the 6th Principal Meridian, McPherson County, Kansas described as follows:

Commencing at the Southeast corner of said Northeast Quarter; thence on a NAD 83 Kansas South Zone bearing of North 00°33'50" West on the East line of said Northeast Quarter a distance of 364.25 feet to the point of beginning; thence South 89°26'10" West perpendicular to said East line a distance of 1148.78 feet; thence North 00°33'50" West parallel with said East line a distance of 45.00 feet; thence North 89°26'10" East perpendicular to said East line a distance of 1148.78 feet to said East line; thence South 00°33'50" East on said East line a distance of 45.00 feet to the point of beginning.

#### SURVEYOR'S CERTIFICATE:

I hereby certify this plat to be a true, correct and complete representation of the property described hereon, as surveyed under my supervision, this 2nd day of August, 2017.



SE Cor. NE 1/4  
Sec. 7, T20S, R1W  
Fd. 5/8" Rebar  
Origin: GSS Project #G2015-654

P.O.C.

Prepared For: <b>DON BECKER</b>		Description: <b>A PORTION OF THE NE 1/4 SECTION 7, T20S, R1W McPHERSON COUNTY, KANSAS</b>	
Prepared By: <b>Garber Surveying Service, P.A.</b>			
HUTCHINSON (Main Office) 2908 North Plum St. 67502 Ph. 620-665-7032 Fax 620-663-7401			
McPHERSON (Branch Office) 115 East Marlin 67460 Ph. 620-241-4441 Fax 620-241-4458			
NEWTON (Branch Office) 511 North Poplar St. 67114 Ph. 316-283-5053 Fax 316-283-5073			
Drawn By: <b>KDZ</b>	Scale: <b>1"=100'</b>	Date of Field Work: <b>April 28, 2017</b>	Job No: <b>G2017-514</b>
Checked By: <b>NDS</b>	Date: <b>8/2/2017</b>	Sheet <b>1 of 1</b> Sheet(s)	

Revision to G2017-254