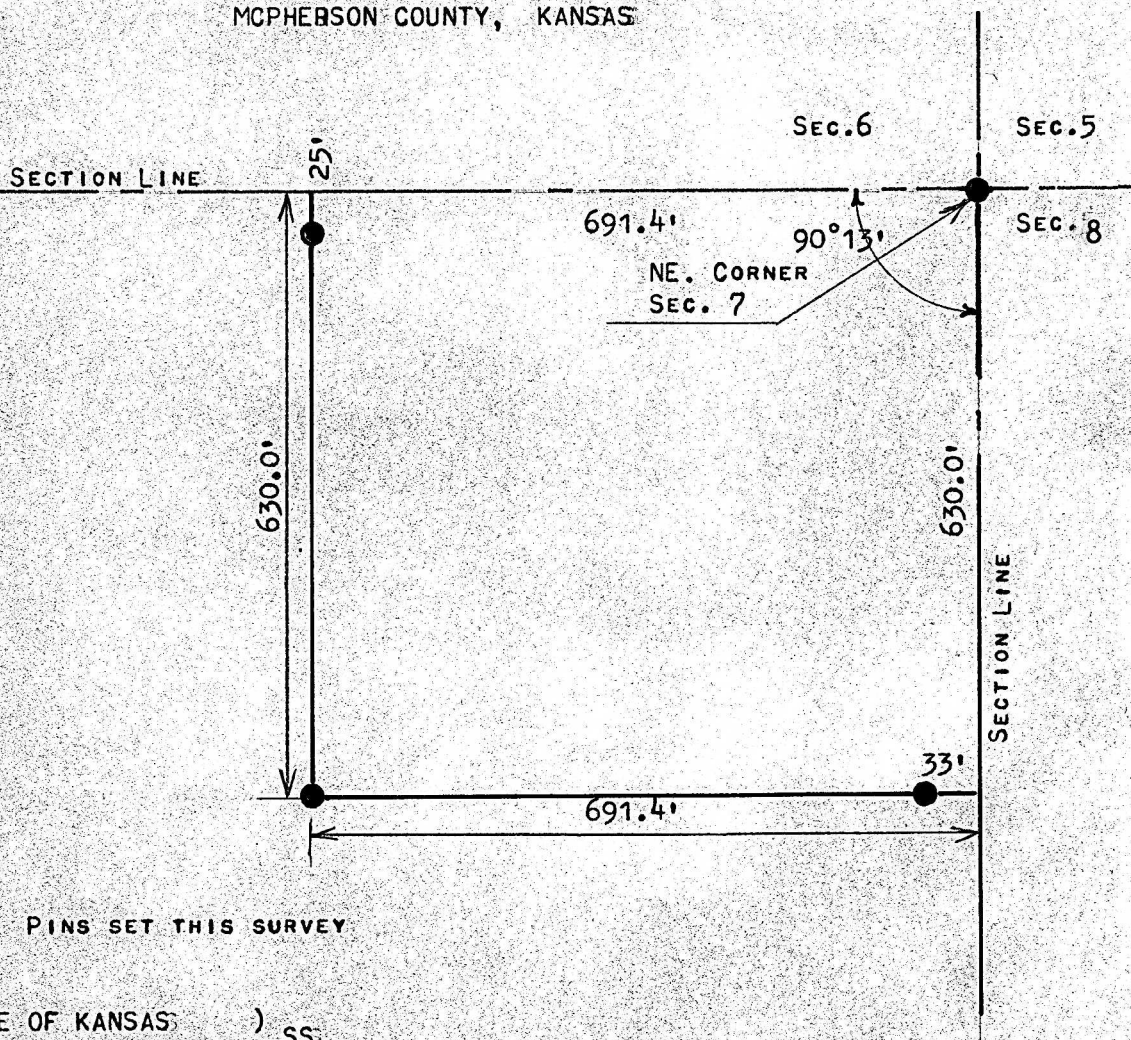


A SURVEY OF A TRACT OF LAND IN THE
NE1/4, SECTION 7, T19S-R5W
MCPHERSON COUNTY, KANSAS



PINS SET THIS SURVEY

STATE OF KANSAS)
COUNTY OF MCPHERSON) SS:

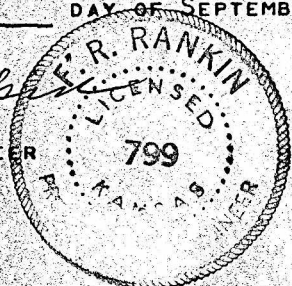
FRANCIS RANKIN, PROFESSIONAL ENGINEER OF THE STATE OF KANSAS
HEREBY CERTIFY THAT UNDER MY SUPERVISION A SURVEY WAS MADE OF
TRACT OF LAND IN THE NE1/4, SECTION 7, T19S, R5W OF THE 6TH P.M.
DESCRIBED AS FOLLOWS;

BEGINNING AT THE NE CORNER OF THE SAID NE1/4, SECTION 7, T19S, R5W;
THENCE SOUTH ON SECTION LINE 630.0 FEET; THENCE WEST PARALLEL WITH
SECTION LINE 691.4 FEET; THENCE NORTH TO SECTION LINE 630.0 FEET;
THENCE EAST 691.4 FEET TO PLACE OF BEGINNING SAID TRACT OF LAND
CONTAINS 10.0 ACRES MORE OR LESS, AND THAT THE ACCOMPANYING PLAT
IS A TRUE EXHIBIT OF SAID SURVEY AS FAR AS IT IS KNOWN TO ME

SURVEY CALLED FOR BY JACK O'NEAL

SIGNED THIS 6 DAY OF SEPTEMBER, 1972

FRANCIS RANKIN
PROFESSIONAL ENGINEER
MCPHERSON, KANSAS



MICROFILM